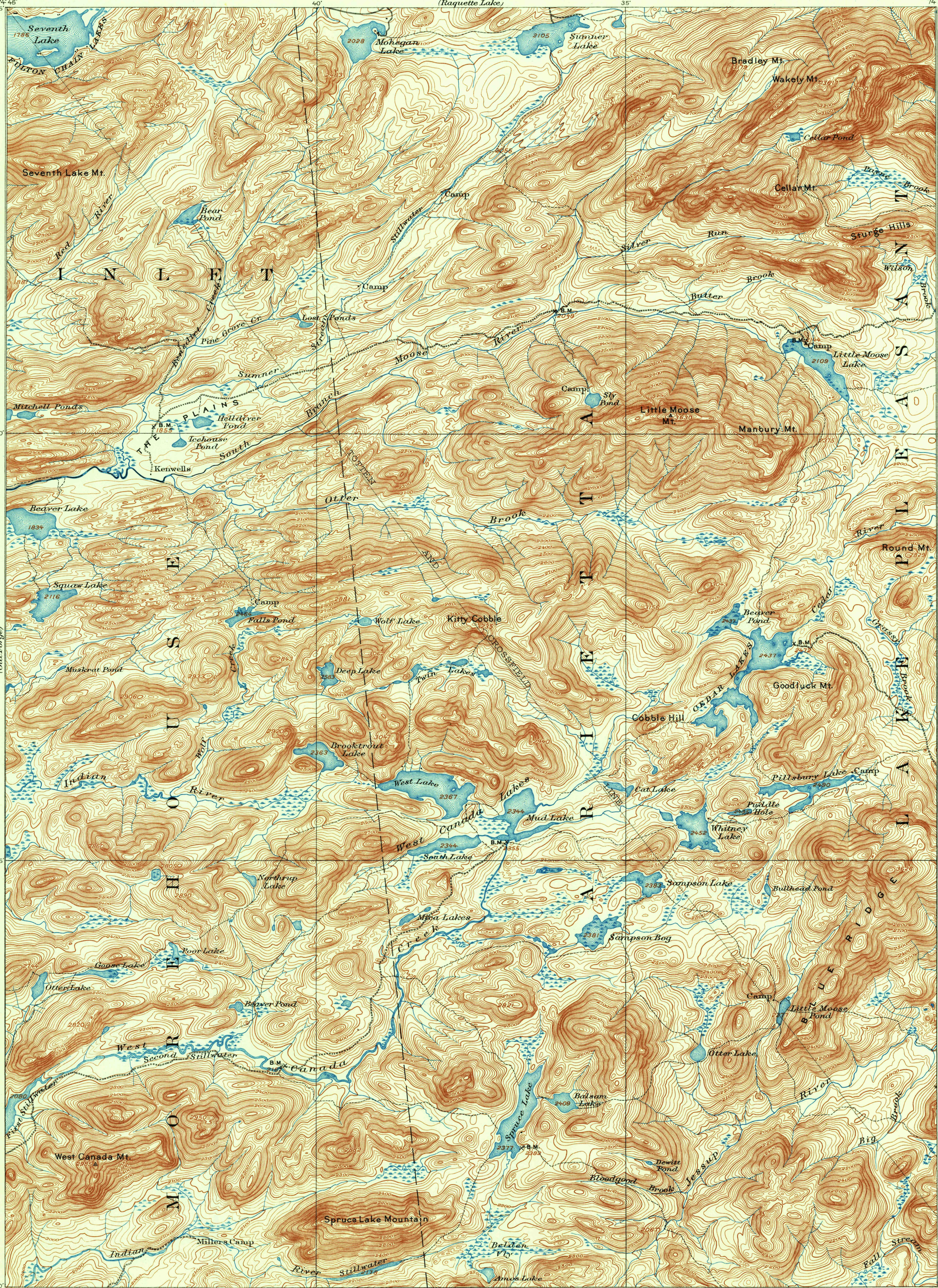


U.S.G.S.
FILE COPY
Inspection and Editing

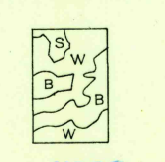


H.M. Wilson, Geographer in charge.
Triangulation by W.J. Peters.
Topography by A.M. Walker, Glenn S. Smith
and A.H. Bumstead.
Surveyed in 1898 in cooperation with the
State of New York.
Entirely within Adirondack Park

APPROXIMATE MEAN
DECLINATION 1902



Contour interval 20 feet
Datum is mean sea level



Edition of June 1903, reprinted 1948
Polyconic projection.

USGS
Historical File
Topographic Division

WEST CANADA LAKES, N.Y.
N4330-W7430/15