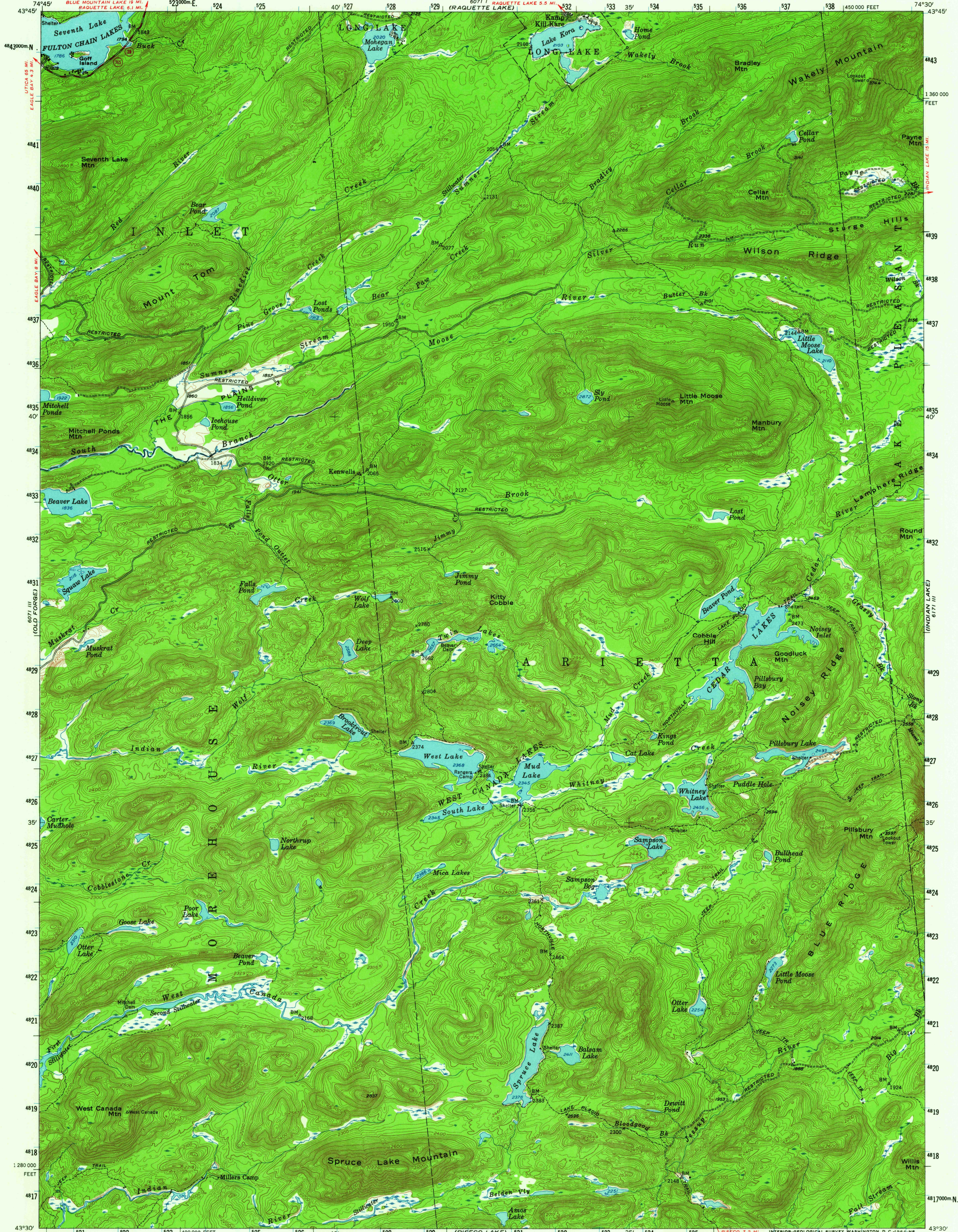
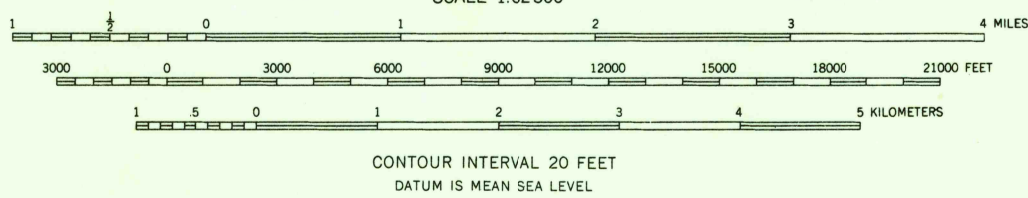
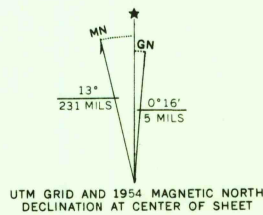


UNITED STATES
DEPARTMENT OF THE INTERIOR
GEOLOGICAL SURVEY

WEST CANADA LAKES QUADRANGLE
NEW YORK—HAMILTON CO.
15 MINUTE SERIES (TOPOGRAPHIC)



Maped, edited, and published by the Geological Survey
Control by USGS and USC&GS
Topography from aerial photographs by photogrammetric methods
Aerial photographs taken 1953. Field check 1954
Polyconic projection. 1927 North American datum
10,000-foot grid based on New York coordinate system, east zone
1000-meter Universal Transverse Mercator grid ticks,
zone 18, shown in blue
Entire area lies within Adirondack State Park
Unchecked elevations are shown in brown



ROAD CLASSIFICATION
Unimproved dirt ————
State Route

WEST CANADA LAKES, N. Y.
N 4330—W 7430/15

1954
AMS 6071 II—SERIES V721

SEP 24 1964

15,255

COPY
TOPOGRAPHIC DIVISION