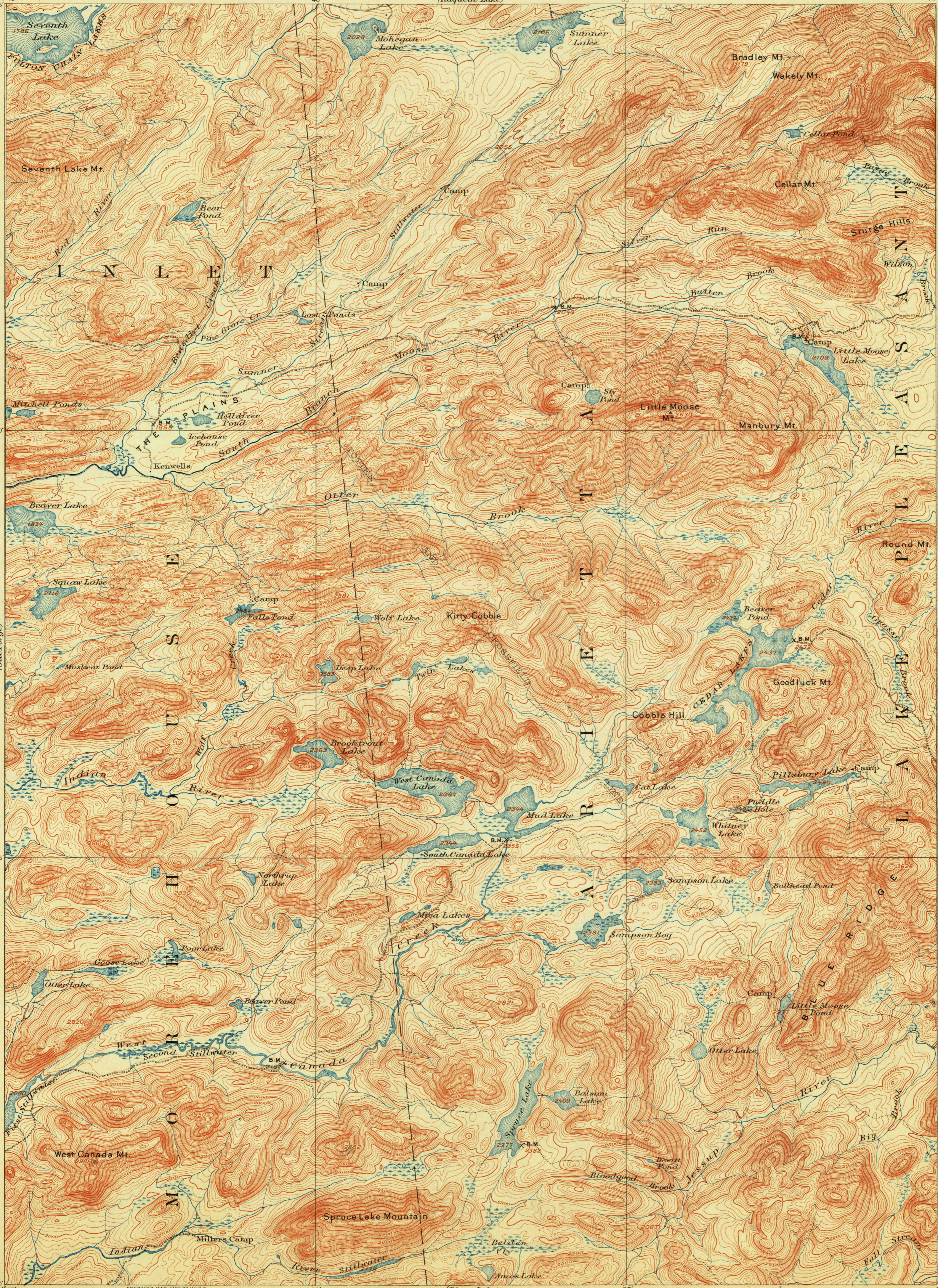


TOPOGRAPHY

U. S. GEOLOGICAL SURVEY
GEORGE OTIS SMITH
DIRECTOR.

STATE OF NEW YORK
REPRESENTED BY THE
STATE ENGINEER AND SURVEYOR
(Raquette Lake)

NEW YORK
(HAMILTON COUNTY)
WEST CANADA LAKES QUADRANGLE

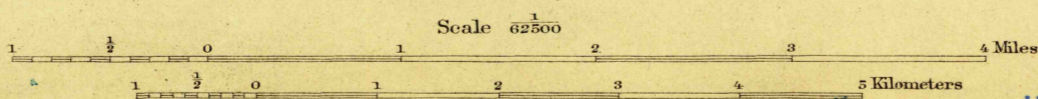


U. S. G. S.
FILE COPY
Ed. Div. Topographic Maps.

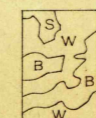
U. S. G. S.
FILE COPY
Ed. Div. Topographic Maps.

H.M. Wilson, Geographer in charge.
Triangulation by W.J. Peters.
Topography by A.M. Walker, Glenn S. Smith
and A. H. Bumstead.
Surveyed in 1898 in cooperation with the
State of New York.

APPROXIMATE MEAN
DECLINATION 1902



Contour interval 20 feet.
Datum is mean sea level.



USGS
Historical File
Topographic Division

ENGRAVED MAR. 1900 BY U.S.G.S.
Edition of June 1903, reprinted Dec. 1913.

JAN 31 1914 5133.

WEST CANADA LAKES, NY.