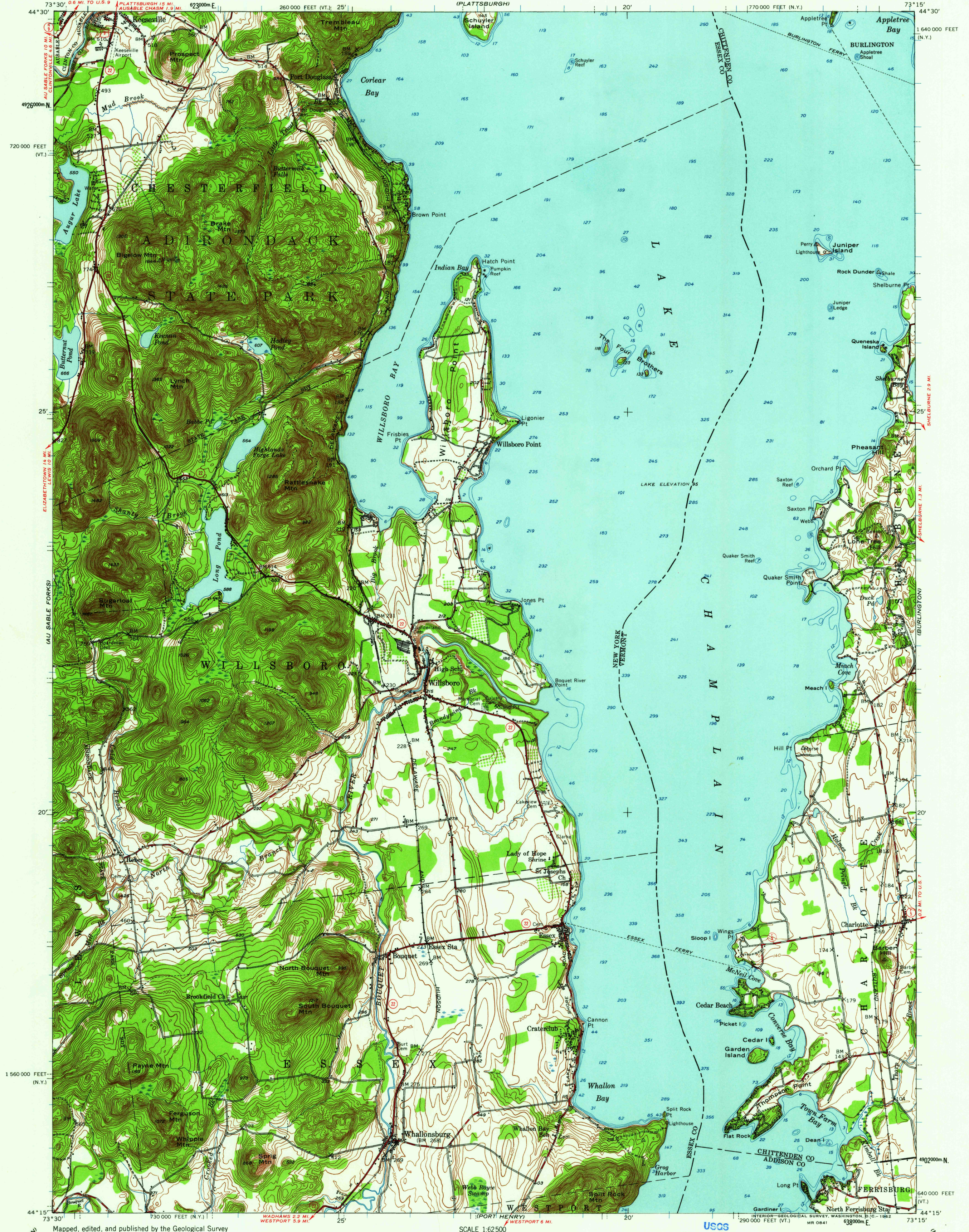


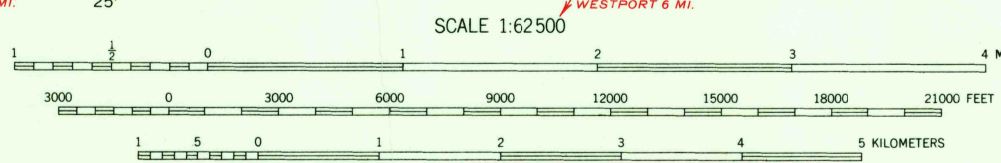
UNITED STATES  
DEPARTMENT OF THE INTERIOR  
GEOLOGICAL SURVEY

WILLSBORO QUADRANGLE  
NEW YORK-VERMONT  
15 MINUTE SERIES (TOPOGRAPHIC)



Mapped, edited, and published by the Geological Survey  
Control by USGS, USC&GS and U. S. Lake Survey  
Topography by planetable surveys 1938-1939. Revised 1956  
Hydrography compiled from U. S. Lake Survey chart 172 (1952)  
and 173 (1953)  
Polyconic projection. 1927 North American datum  
10,000-foot grids based on New York coordinate system,  
east zone, and Vermont coordinate system  
1000-meter Universal Transverse Mercator grid ticks,  
zone 18, shown in blue

APPROXIMATE MEAN  
DECLINATION, 1956



FOR SALE BY U. S. GEOLOGICAL SURVEY, WASHINGTON 25, D. C.  
A FOLDER DESCRIBING TOPOGRAPHIC MAPS AND SYMBOLS IS AVAILABLE ON REQUEST

USGS  
Historical File  
Topographic Division



ROAD CLASSIFICATION  
Heavy-duty ——— Light-duty ———  
Medium-duty ——— Unimproved dirt ———  
U. S. Route ——— State Route ———

U.S.G.S. WILLSBORO, N. Y.-VT.  
N4415-W7315/15  
1956