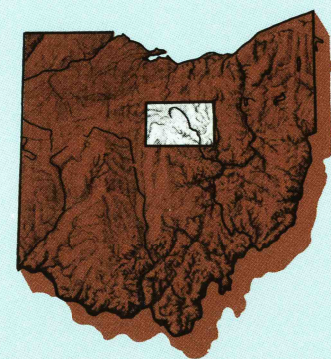


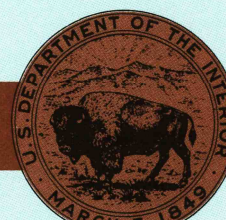
**Mansfield**  
OHIO

1:100 000-scale *metric*  
planimetric map



30 X 60 MINUTE QUADRANGLE  
SHOWING

- Elevations in meters
- Highways, roads and other manmade structures
- Water features
- Woodland areas
- Geographic names



GEOLOGICAL SURVEY

1986

Produced by the United States Geological Survey

Compiled from USGS 1:24 000-scale topographic maps dated 1960-1982. Planimetry revised from aerial photographs taken 1981 and other source data. Revised information not field checked. Map edited 1986

Projection and 10 000-meter grid, zone 17,  
Universal Transverse Mercator  
25 000-foot grid ticks based on Ohio coordinate  
system, north zone

**1927 North American Datum**  
To place on the predicted North American Datum 1983, move the projection lines 2 meters south and 10 meters west.

There may be private inholdings within the boundaries of the National or State reservations shown on this map.

NATIONAL GEODETIC VERTICAL DATUM OF 1929

THIS MAP COMPLIES WITH NATIONAL MAP ACCURACY STANDARDS

Meters	Feet
1	3.2808
2	6.5617
3	9.8425
4	13.1234
5	16.4042
6	19.6850
7	22.9659
8	26.2467
9	29.5276
10	32.8084

5° 17' MILS

UTM grid convergence (GN) and 1986 magnetic declination (MN) at center of map  
Diagram is approximate

1	2	3
4	5	6
7	8	

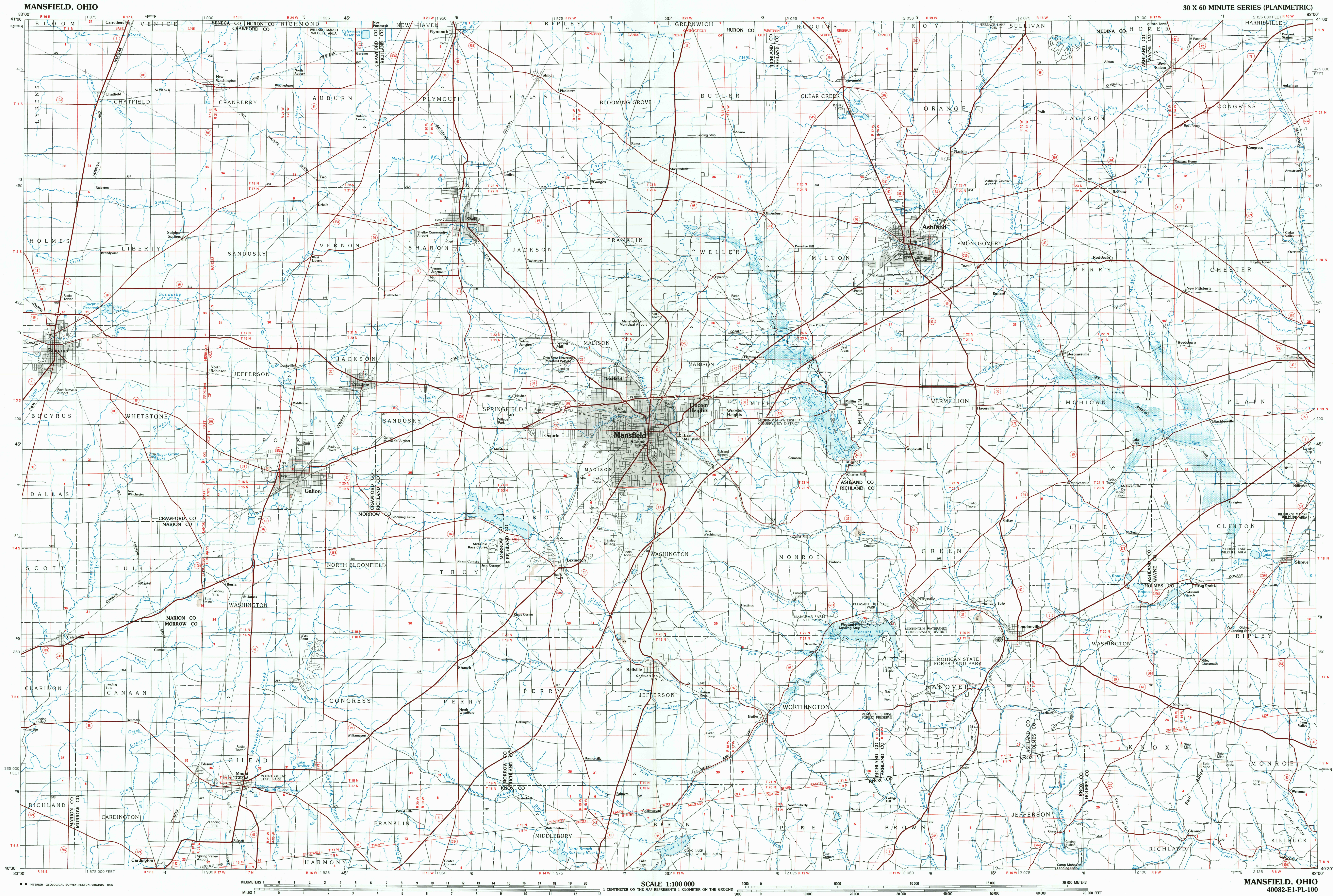
1 Findlay  
2 Lorain  
3 Cleveland South  
4 Canton  
5 Canton  
6 Bellefontaine  
7 Newark  
8 Coshocton

FOR SALE BY U. S. GEOLOGICAL SURVEY  
RESTON, VIRGINIA 22092

## Topographic Map Symbols

- Primary highway, hard surface  
Secondary highway, hard surface  
Light duty road, principal street, hard or improved surface  
Other road or street, trail  
Route marker: Interstate, U.S. State  
Standard gauge, narrow gauge  
Bridge, overpass, underpass  
Tunnel, road, railroad  
Built up area; locality, elevation  
Airport, landing field, landing strip  
National boundary  
State boundary  
County boundary  
National or State reservation boundary  
and grant boundary  
U.S. public lands survey; range, township; section  
Range, township; section line; protected  
Power transmission line; pipeline  
Ditch, drain with lock  
Canal; building  
Windmill; water well; spring  
Mine shaft; adit or cave; mine, quarry; gravel pit  
Campground; picnic area; U.S. location monument  
Rivers; cliff dwelling  
Distorted surface; strip mine, lava, sand  
Concentric; index; intermediate; supplementary  
Dyathematic contours; index; intermediate  
Bathymetric, lake; parental; intermittent  
Rapids, large and small; falls, large and small  
Area to be submerged; marsh, swamp  
Area subject to controlled inundation; woodland  
Shoreline  
Ditch; furrow  
325-3

A pamphlet describing topographic maps is available on request.



• • INTERIOR—GEOLOGICAL SURVEY, RESTON, VIRGINIA—1960

**MANSFIELD, OHIO**

40082-E1-PL-100

1986