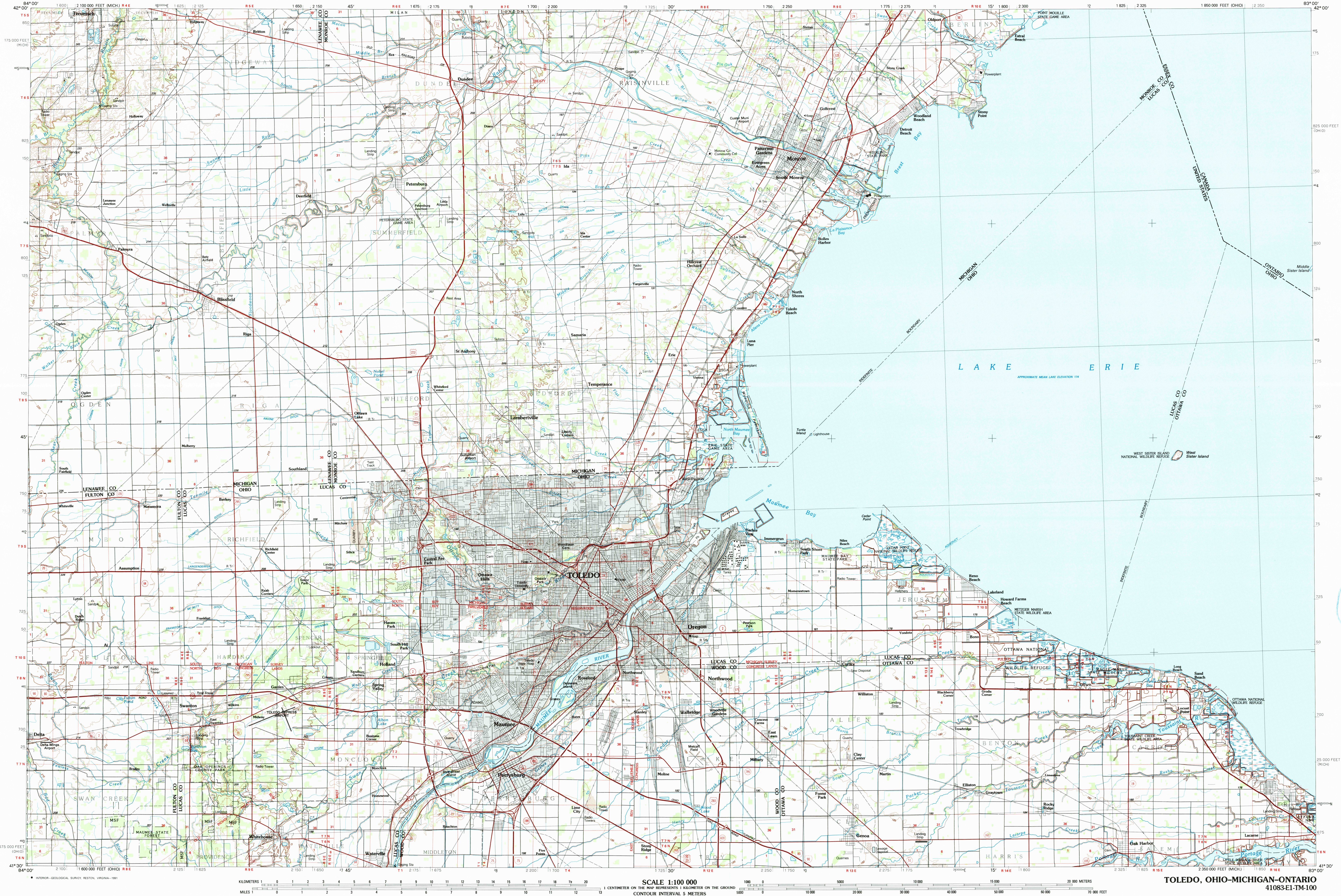


**TOLEDO, OHIO-MICHIGAN-ONTARIO**

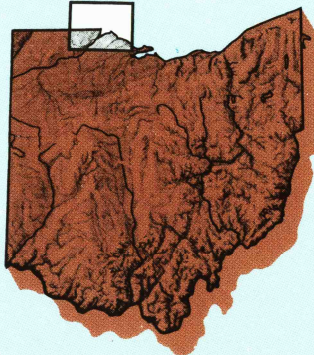
### 30 X 60 MINUTE SERIES (TOPOGRAPHIC)



# Toledo

## OHIO-MICHIGAN-ONTARIO

1:100 000-scale *metric*  
topographic map



- Contours and elevations in meters
- Highways, roads and other manmade structures
- Water features
- Woodland areas
- Geographic names

1986  
INSPECTED 1987

Produced by the United States Geological Survey

Compiled from USGS 1:250,000-scale topographic maps dated 1960-1981. Planimetry revised from aerial photographs taken 1983 and other source data. Revised information not checked. Modified 1986.

Projection and 10 000-meter zone, zone 17,  
Universal Transverse Mercator

20 000-foot grid ticks based on Ohio coordinate system, north zone and Michigan coordinate system, south zone

1987 North American Datum 1983

To place on the predicted North American Datum 1983, move the projection lines 1 meter south and 6 meters west

There may be private inholdings within the boundaries of the National or State Reservations shown on this map

Map photospinsected using 1987 photographs  
No major culture or drainage changes found

CONTOUR INTERVAL = 5 METERS

NATIONAL GEODETIC VERTICAL DATUM OF 1929

ELEVATIONS SHOWN TO THE NEAREST METER

THIS MAP COMPLIES WITH NATIONAL MAP ACCURACY STANDARD

CONVERSION TABLE	
Meters	Feet
1	3.2808
2	6.5617
3	9.8425
4	13.1234
5	16.4042
10	32.8084
20	65.6167
30	98.4250
40	131.2336
50	164.0419

4°W      4°W  
80' MILS      30' MILS

UTM grid convergence (GN) and 1980 magnetic declination (MN) at center of map  
Diagram is approximate

ADJOINING MAPS			
1	2	3	4
4	5	6	7
6	7	8	9

1 Jackson  
2 Detroit  
3 Lake St Clair South  
4 Adrian  
5 Put-In-Bay  
6 Delaware  
7 Findlay  
8 Lorain

FOR SALE BY U. S. GEOLOGICAL SURVEY  
DENVER, COLORADO 80225, OR RESTON, VIRGINIA 22092

## Topographic Map Symbols

- Primary highway, hard surface  
Secondary highway, hard surface  
Light duty road, principal street, hard or improved surface  
Other road or avenue  
Other marker: Interstate, U.S. State  
Unimproved: overpass gage, narrow gage  
Bridge; covered gage  
Tunnel; road, railroad  
Salt up area; locality, elevation  
Airport, landing field; landing strip  
National boundary  
State boundary  
County boundary  
National or State reservation boundary  
Land grant boundary  
U.S. public lands survey: range, township, section  
Range, township; section line: protracted  
Power transmission line: pipeline  
Dam; dam with lock  
Cemetery; building  
Windmill; water well; spring  
Mine shaft; adit or cave; mine; gravel pit  
Campground; picnic area; U.S. location monument  
Shelters; cliff dwelling  
Obstructed passage: strip mine, lava, sand  
Contours: index, intermediate, supplementary  
Bathymetric contours: index, intermediate  
Stream, lake, perennial; intermittent  
Rapids; large and small; falls, large and small  
Area to be submerged; marsh, swamp  
Subject to controlled inundation; woodland  
Flooded; mire  
Archard, mowed

A pamphlet describing topographic maps is available on request