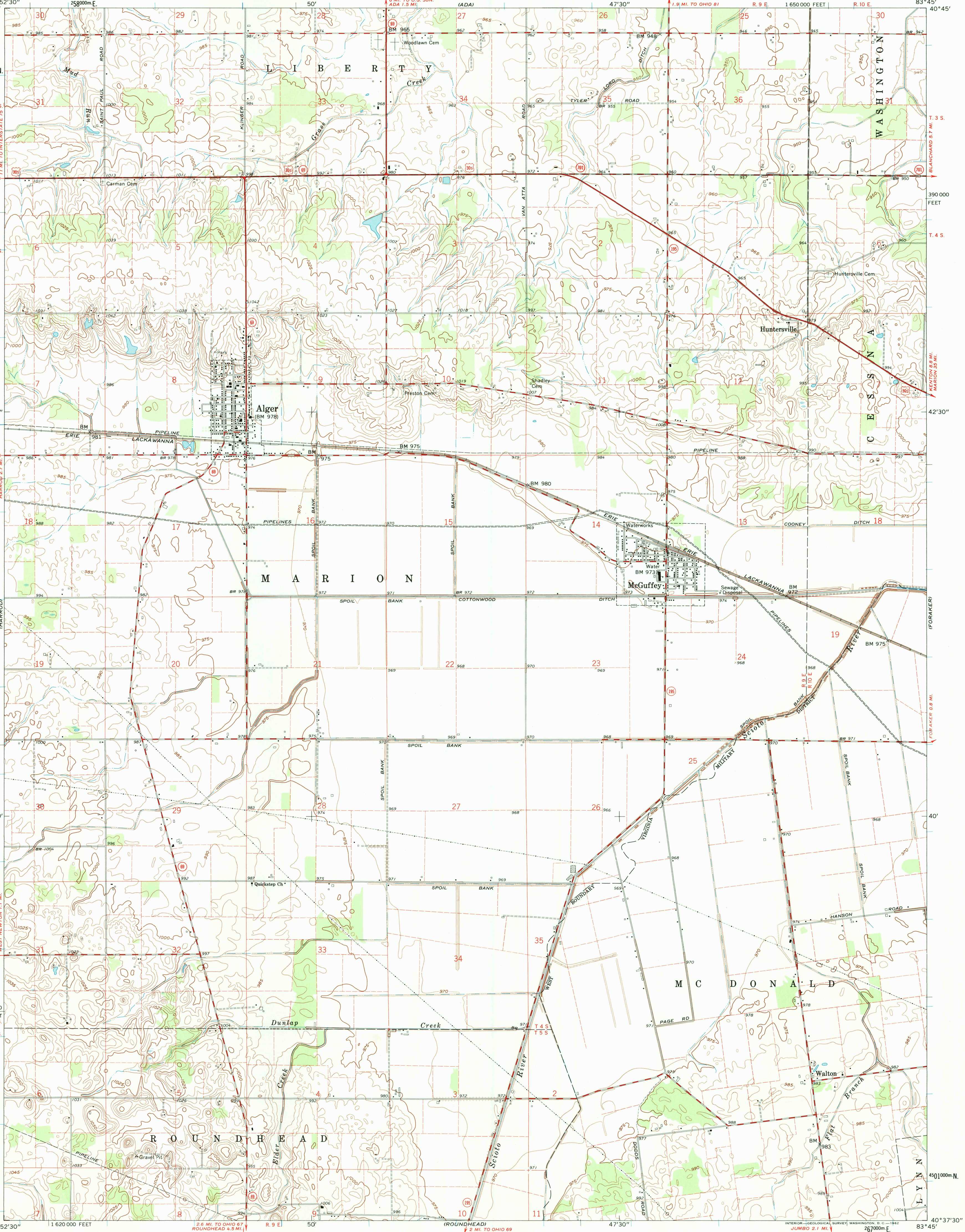


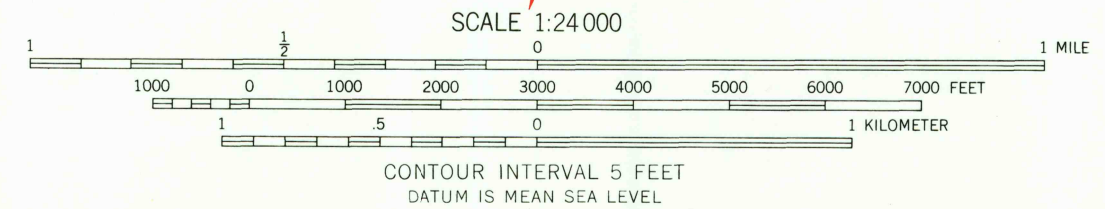
UNITED STATES
DEPARTMENT OF THE INTERIOR
GEOLOGICAL SURVEY

STATE OF OHIO
DEPARTMENT OF HIGHWAYS
DEPARTMENT OF NATURAL RESOURCES
DIVISION OF GEOLOGICAL SURVEY

ALGER QUADRANGLE
OHIO-HARDIN CO.
7.5 MINUTE SERIES (TOPOGRAPHIC)
NE/4 ALGER 15' QUADRANGLE



Mapped, edited, and published by the Geological Survey
Control by USGS and USC&GS
Topography by photogrammetric methods from aerial
photographs taken 1959-60 and planetable surveys 1961
Polyconic projection. 1927 North American datum
10,000-foot grid based on Ohio coordinate system, north zone
1000-meter Universal Transverse Mercator grid ticks,
zone 17, shown in blue
Area west of the Scioto River lies within Congress Lands
Land lines based on the First Principal Meridian
Area east of the Scioto River lies within the Virginia Military District
Fine red dashed lines indicate selected fence and field lines where
generally visible on aerial photographs. This information is unchecked



ROAD CLASSIFICATION
Heavy-duty ——— Light-duty ———
Medium-duty ——— Unimproved dirt ———
U. S. Route —○— State Route —○—



USGS AND HISTORICAL
MAP ARCHIVES
MAY 18 1995
REC'D FILE COPY

ALGER, OHIO
NE/4 ALGER 15' QUADRANGLE
N4037.5—W8345/7.5
1961

THIS MAP COMPLIES WITH NATIONAL MAP ACCURACY STANDARDS
FOR SALE BY U. S. GEOLOGICAL SURVEY, WASHINGTON 25, D. C.
A FOLDER DESCRIBING TOPOGRAPHIC MAPS AND SYMBOLS IS AVAILABLE ON REQUEST