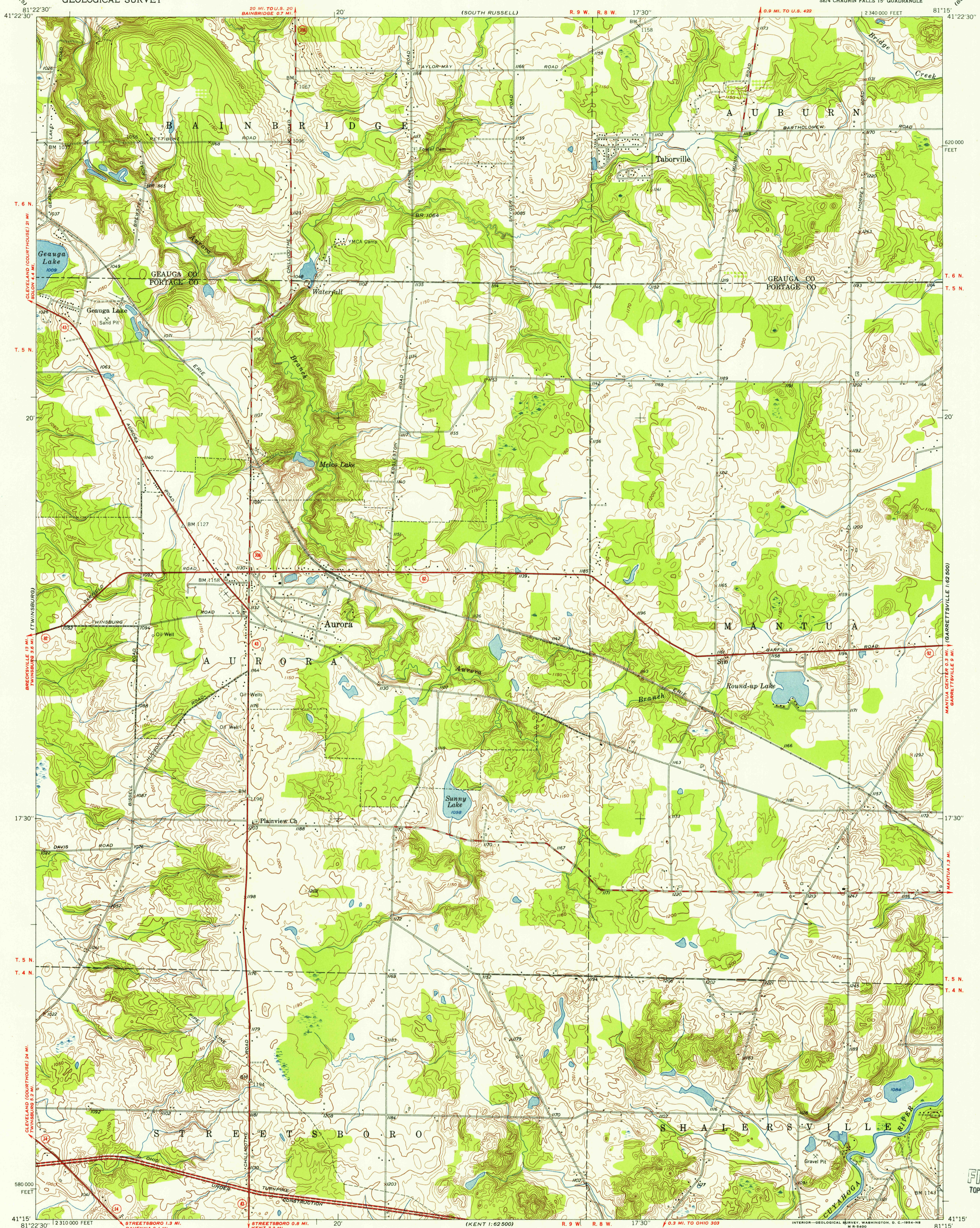


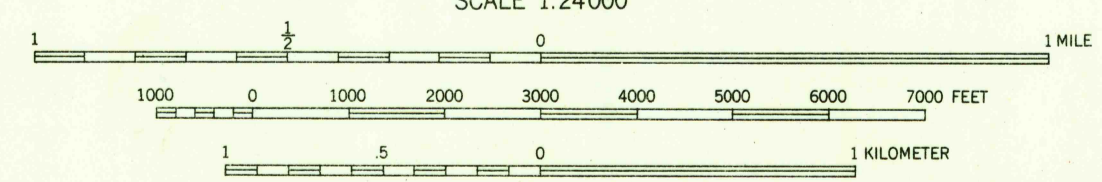
U.S.G.S.
FILE COPY
TOPOGRAPHIC DIVISION



81°22'30"
41°22'30"
T. 6 N.
T. 5 N.
T. 4 N.
T. 5 N.
T. 4 N.
41°15'
81°22'30"

81°15'
41°22'30"
T. 6 N.
T. 5 N.
17°30'
17°30'
T. 5 N.
T. 4 N.
41°15'

Mapped, edited, and published by the Geological Survey
Control by USGS, USC&GS, and the Cleveland Regional Geodetic Survey
Topography from aerial photographs by photogrammetric methods
Aerial photographs taken 1952. Field check 1953
Polyconic projection. 1927 North American datum
10,000-foot grid based on Ohio coordinate system,
north zone
Entire area lies within the Connecticut Western Reserve
Land lines were established by the Connecticut Land Company



ROAD CLASSIFICATION

Heavy-duty	4 LANE 16 LANE	Light-duty
Medium-duty	2 LANE 16 LANE	Unimproved dirt
	U. S. Route	State Route



USGS
Historical File
Topographic Division

AURORA, OHIO
SE/4 CHAGRIN FALLS 15' QUADRANGLE
N 4115 - W 8115 / 7.5

SCALE 1:24,000
CONTOUR INTERVAL 10 FEET
DATUM IS MEAN SEA LEVEL
THIS MAP COMPLIES WITH NATIONAL MAP ACCURACY STANDARDS
FOR SALE BY U.S. GEOLOGICAL SURVEY, WASHINGTON 25, D.C.
A FOLDER DESCRIBING TOPOGRAPHIC MAPS AND SYMBOLS IS AVAILABLE ON REQUEST

1953

U.S.G.S.
FILE COPY
TOPOGRAPHIC DIVISION

DEC 16 1954