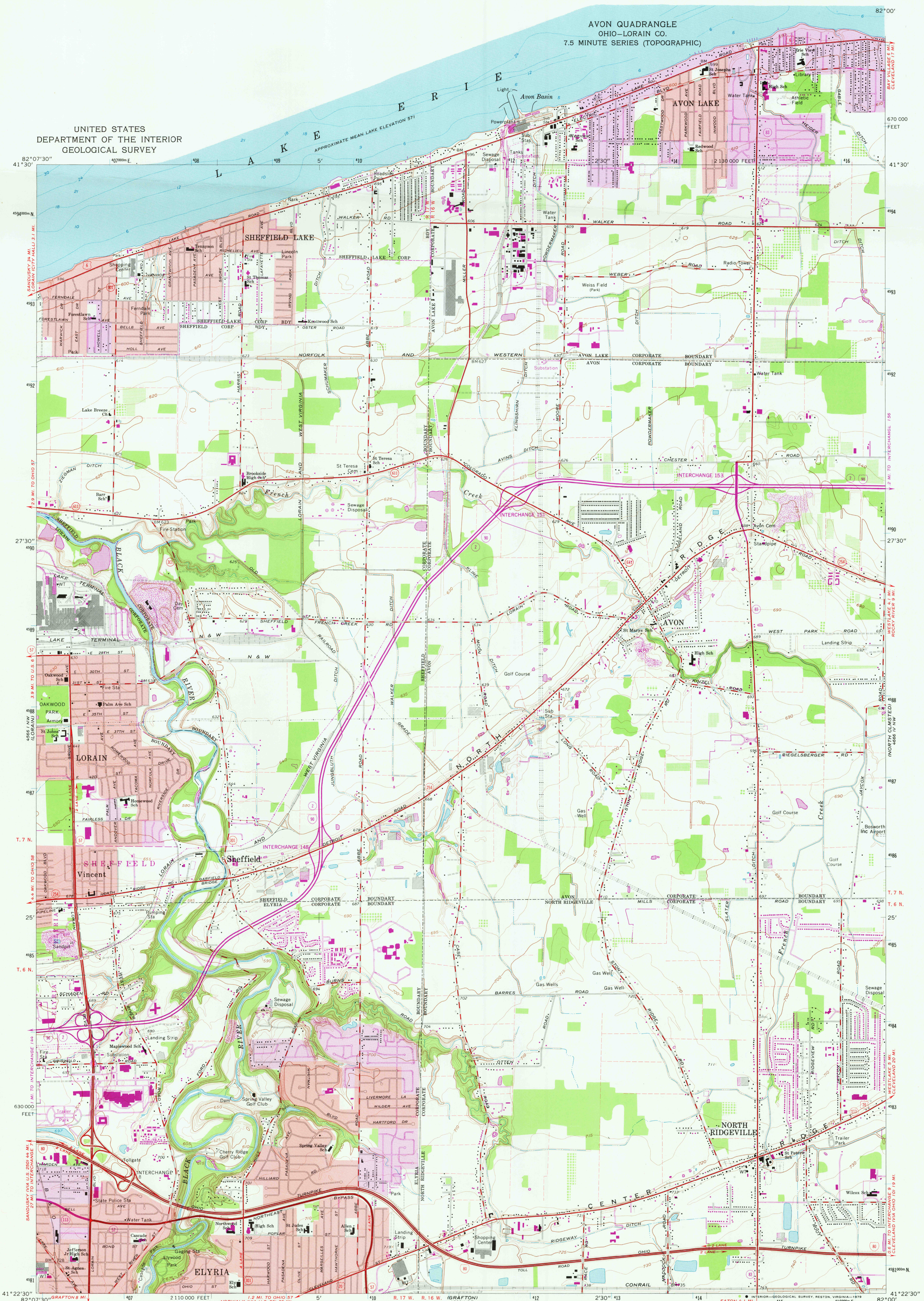
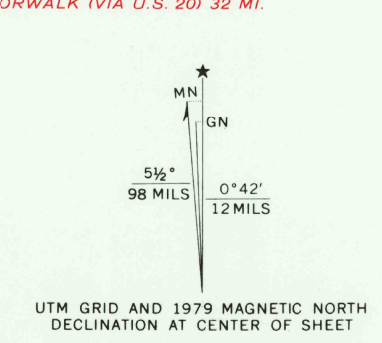


UNITED STATES
DEPARTMENT OF THE INTERIOR
GEOLOGICAL SURVEY

AVON QUADRANGLE
OHIO-LORAIN CO.
7.5 MINUTE SERIES (TOPOGRAPHIC)



Maped, edited, and published by the Geological Survey
Revised in cooperation with State of Ohio agencies
Control by USGS and USCGS
Planimetry by photogrammetric methods from aerial photographs
taken 1952. Topography by planimetric surveys 1953. Revised
from aerial photographs taken 1962. Field checked 1963
Selected hydrographic data compiled from U.S. Lake Survey Chart
35 (1959). This information is not intended for navigational purposes
Polyconic projection. 1927 North American datum
10,000-foot grid based on Ohio coordinate system, north zone
100-meter Universal Transverse Mercator grid ticks,
zone 17, shown in blue
Fine red dashed lines indicate selected fence and field lines where
generally visible on aerial photographs. This information is unchecked
Red tint indicates areas in which only landmark buildings are shown
Entire area lies within the Connecticut Western Reserve. Land lines
established by private subdivision of the Connecticut Western Reserve



SCALE 1:24,000
NATIONAL GEODETIC VERTICAL DATUM OF 1929
DEPTH CURVES AND SOUNDINGS IN FEET-DATUM IS LOW WATER 570.5 FEET
CONTOUR INTERVAL 5 FEET

ROAD CLASSIFICATION
Heavy-duty ——— Light-duty ———
Medium-duty ——— Unimproved dirt ———
Interstate Route U.S. Route State Route

AVON, OHIO
N4122.5-W8200.7.5
PHOTOREVISED 1979
1963
AMS 4566 1 NE-SERIES V852

RETURN TO:
USGS AND HISTORICAL MAP ARCHIVES