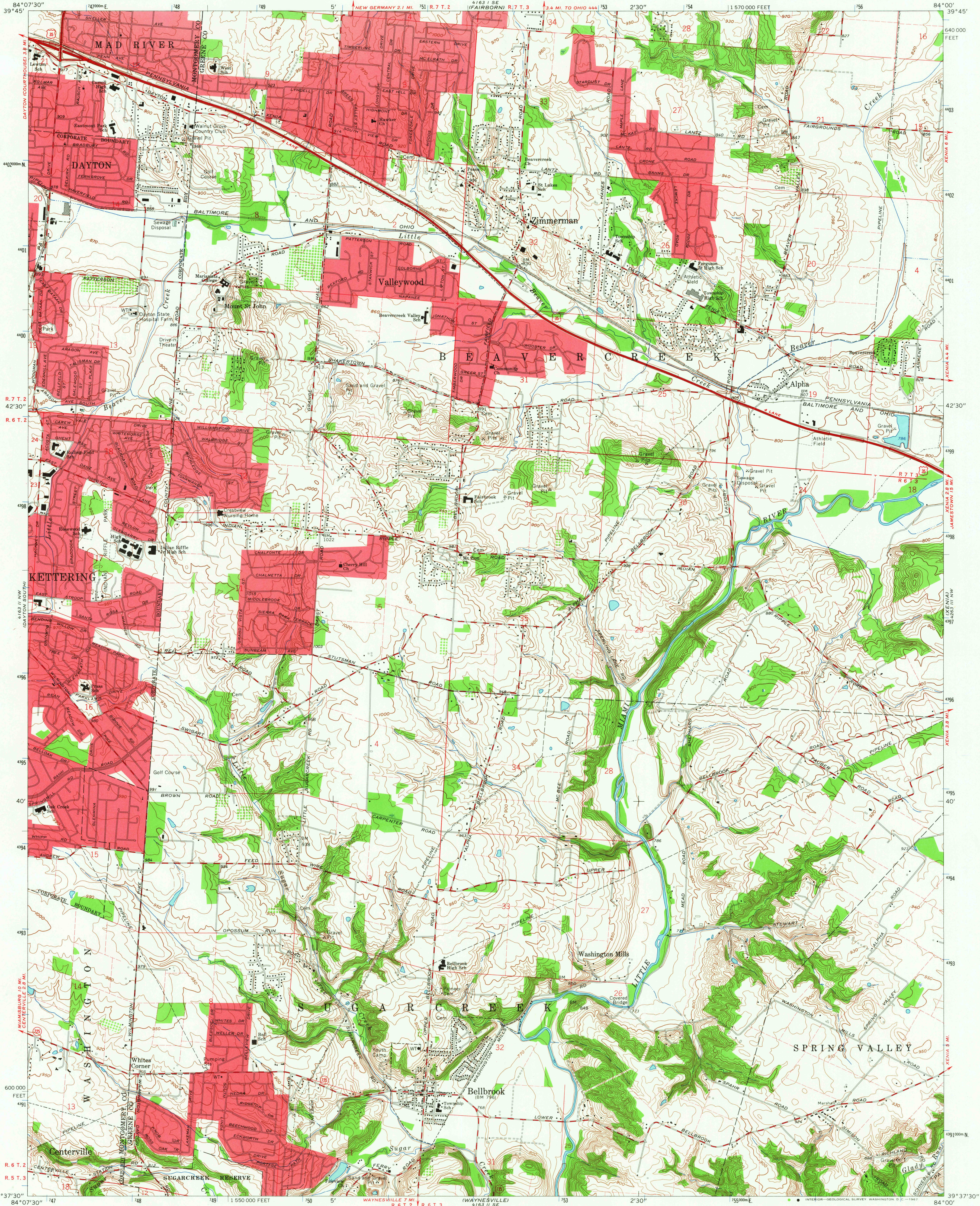
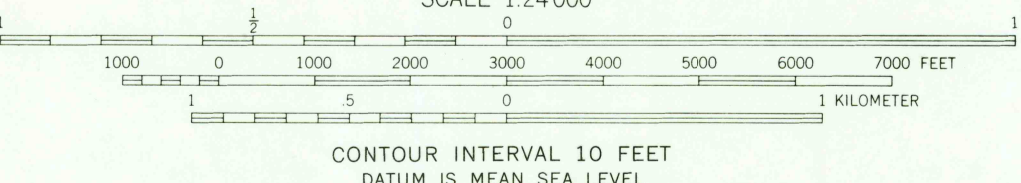
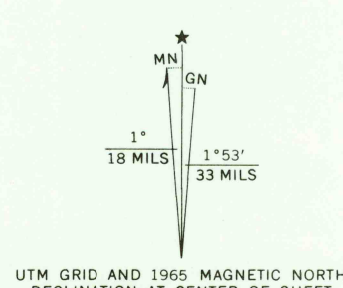


UNITED STATES  
DEPARTMENT OF THE INTERIOR  
GEOLOGICAL SURVEY

BELLBROOK QUADRANGLE  
OHIO  
7.5 MINUTE SERIES (TOPOGRAPHIC)  
NE 1/4 WAYNESVILLE 15' QUADRANGLE



Mapped, edited, and published by the Geological Survey in cooperation with U. S. Corps of Engineers. Revised in cooperation with State of Ohio agencies. Control by USGS, USCGS, and USCE. Topography by photogrammetric methods from aerial photographs taken 1954. Field checked 1955. Revised from aerial photographs taken 1964. Field checked 1965. Polyconic projection. 1927 North American datum. 10,000-foot grid based on Ohio coordinate system, south zone 1000-meter Universal Transverse Mercator grid ticks, zone 16, shown in blue. Fine red dashed lines indicate selected fence and field lines where generally visible on aerial photographs. This information is uncheckered. Red tint indicates areas in which only landmark buildings are shown. Area west of the Little Miami River lies within the Between the Miamis. Land lines based on the Great Miami River Base. Area east of the Little Miami River lies within the Virginia Military District.



USGS  
Historical File  
Topographic Division

ROAD CLASSIFICATION  
Heavy-duty ——— Light-duty ———  
Medium-duty ——— Unimproved dirt ———  
U.S. Route ——— State Route ———



U.S.G.S.  
FILE COPY  
TOPOGRAPHIC DIVISION

BELLBROOK, OHIO  
NE 1/4 WAYNESVILLE 15' QUADRANGLE  
N 3937.5 - W 8400.7 / 5  
1965  
AMS 4163 II NE - SERIES V852

JUN 5 1967

3520