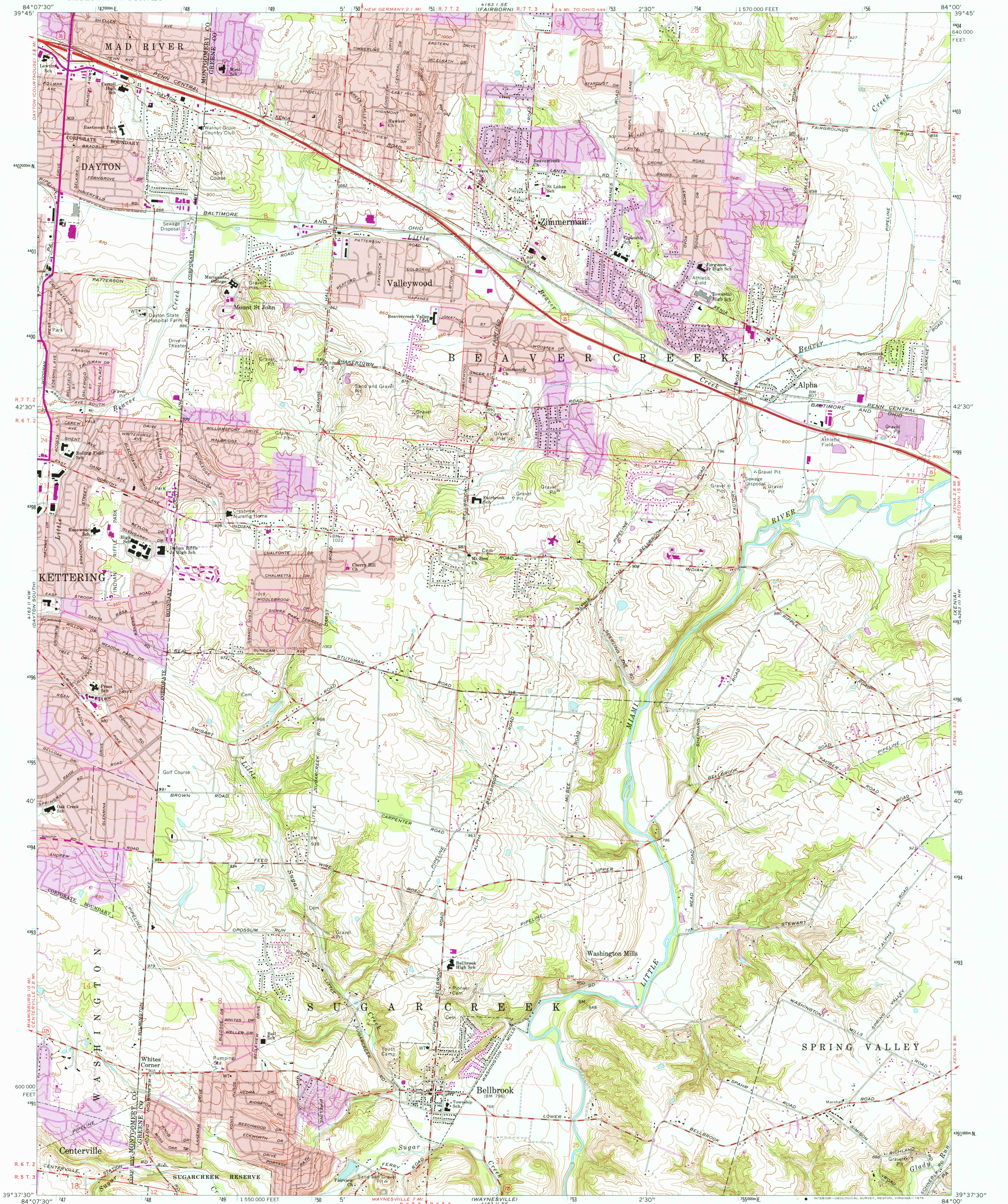
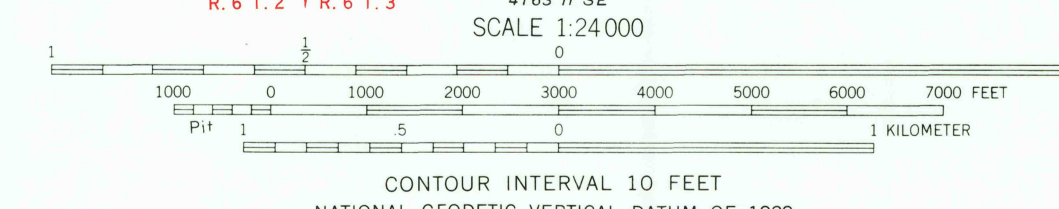
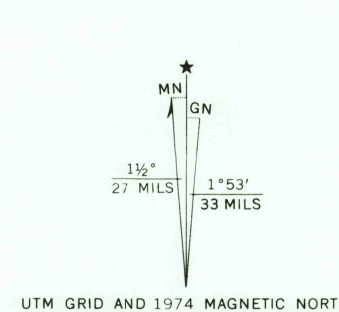


UNITED STATES
DEPARTMENT OF THE INTERIOR
GEOLOGICAL SURVEY

BELLBROOK QUADRANGLE
OHIO
7.5 MINUTE SERIES (TOPOGRAPHIC)



Mapped, edited, and published by the Geological Survey
in cooperation with U. S. Corps of Engineers
Revised in cooperation with State of Ohio agencies
Control by USGS, USC&GS, and USCE
Topography by photogrammetric methods from aerial photographs
taken 1954. Field checked 1955. Revised from aerial
photographs taken 1964. Field checked 1965.
Polyconic projection. 1927 North American datum
10,000-foot grid based on Ohio coordinate system, south zone
1000-meter Universal Transverse Mercator grid ticks, zone 16, shown in blue
Fine red dashed lines indicate selected fence and field lines where
generally visible on aerial photographs. This information is unchecked
Red tint indicates areas in which only landmark buildings are shown
Area west of the Little Miami River lies within the Between the Miamis
Land lines based on the Great Miami River Base
Area east of the Little Miami River lies within the Virginia Military District



ROAD CLASSIFICATION

Heavy-duty	Light-duty
Medium-duty	Unimproved dirt
U. S. Route	State Route

USGS
Historical File
Topographic Division

BELLBROOK, OHIO

N3937.5—W8400/7.5

1965
PHOTOREVISED 1974
AMS 4163 II NE—SERIES V852

Revisions shown in purple compiled in cooperation with
State of Ohio agencies from aerial photographs taken
1974. This information not field checked.
Purple tint indicates extension of urban areas