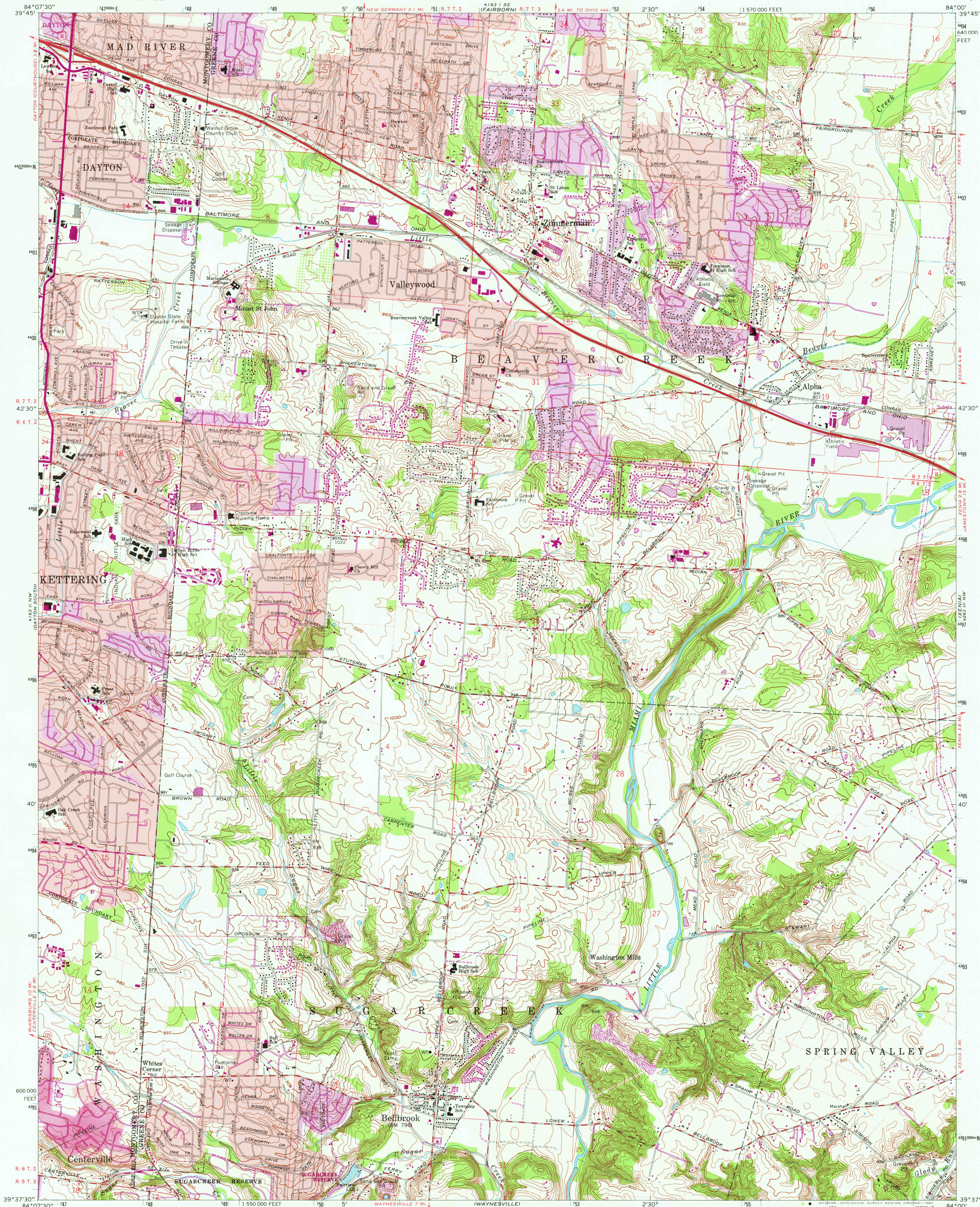


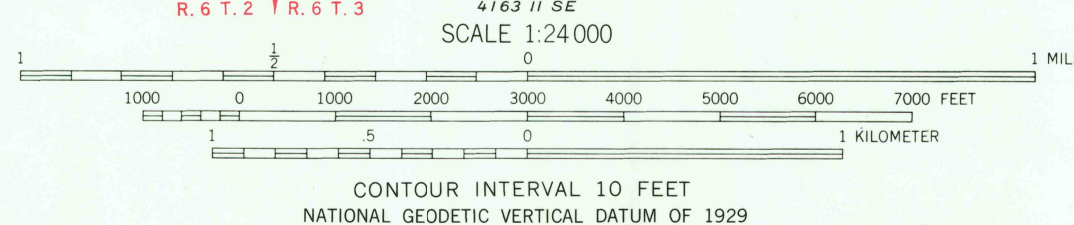
UNITED STATES
DEPARTMENT OF THE INTERIOR
GEOLOGICAL SURVEY

BELLBROOK QUADRANGLE
OHIO
7.5 MINUTE SERIES (TOPOGRAPHIC)



Mapped, edited, and published by the Geological Survey
in cooperation with U. S. Corps of Engineers
Revised in cooperation with State of Ohio agencies
Control by USGS, NOS/NOAA, and USCE
Topography by photogrammetric methods from aerial photographs
taken 1954. Field checked 1955. Revised from aerial photographs
taken 1964. Field checked 1965
Polyconic projection. 10,000-foot grid ticks based on Ohio
coordinate system, south zone. 1000-meter Universal Transverse
Mercator grid ticks, zone 16, shown in blue. 1927 North
American Datum. To place on the predicted North American
Datum 1983 move the projection lines 3 meters south and
6 meters west as shown by dashed corner ticks
Red tint indicates areas in which only landmark buildings are shown
Area west of the Little Miami River lies within the Virginia Military District
Land lines based on the Great Miami River Base
Area east of the Little Miami River lies within the Virginia Military District
There may be private inholdings within the boundaries of
the National or State reservations shown on this map

Revisions shown in purple and woodland compiled in
cooperation with State of Ohio agencies from aerial
photographs taken 1979 and other sources. This
information not field checked. Map edited 1981
Purple tint indicates extension of urban areas



THIS MAP COMPLIES WITH NATIONAL MAP ACCURACY STANDARDS
FOR SALE BY U. S. GEOLOGICAL SURVEY, RESTON, VIRGINIA 22092
A FOLDER DESCRIBING TOPOGRAPHIC MAPS AND SYMBOLS IS AVAILABLE ON REQUEST

ROAD CLASSIFICATION
Heavy-duty ——— Light-duty ———
Medium-duty ——— Unimproved dirt ———
U. S. Route ——— State Route ———

BELLBROOK, OHIO

N3937.5—W8400/7.5

1965
PHOTOREVISED 1981
DMA 4163 II NE—SERIES V852

RETURN TO:
USGS AND HISTORICAL MAP ARCHIVES
SEP 28 1982