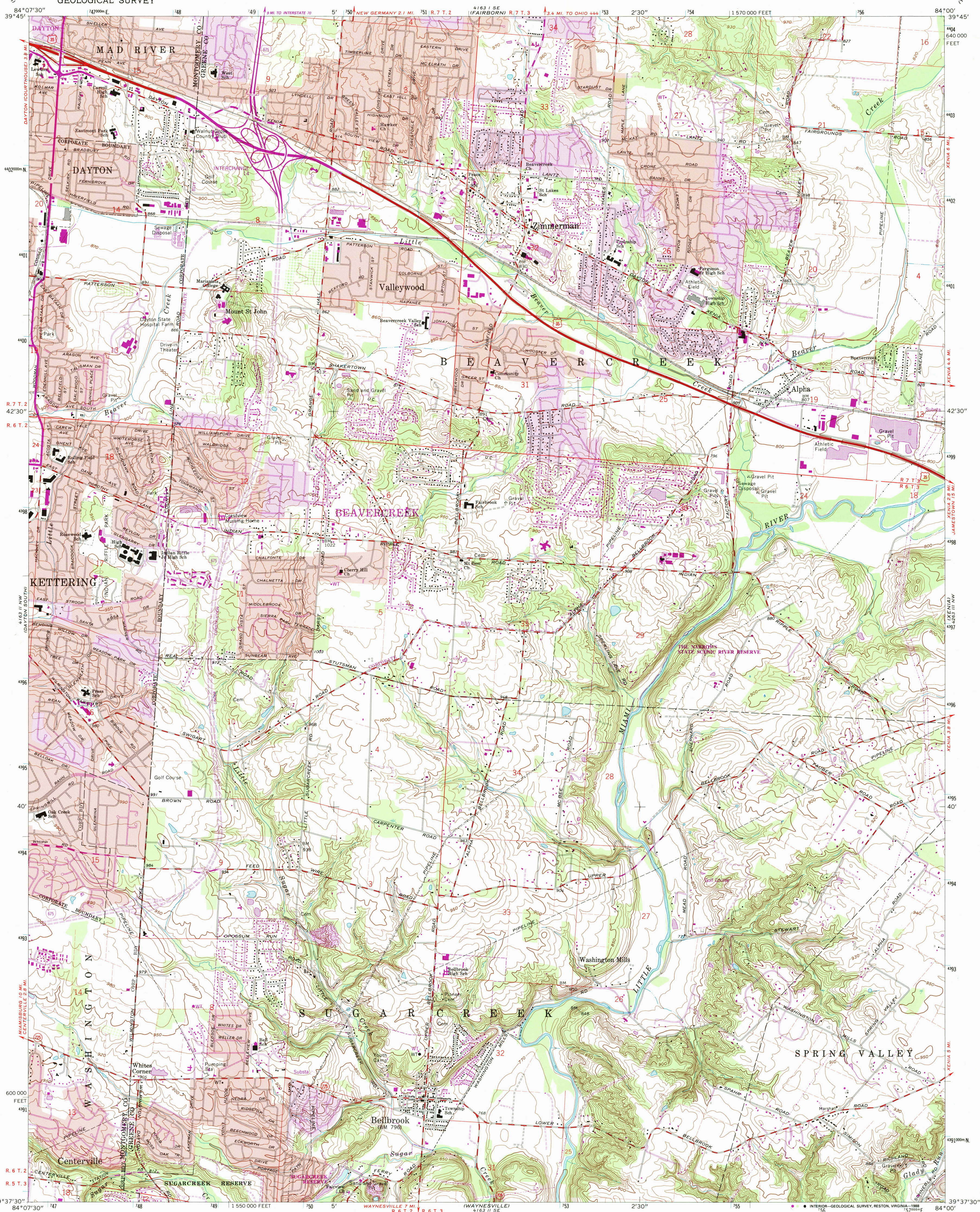


UNITED STATES
DEPARTMENT OF THE INTERIOR
GEOLOGICAL SURVEY

BELLBROOK QUADRANGLE
OHIO
7.5 MINUTE SERIES (TOPOGRAPHIC)



Mapped, edited, and published by the Geological Survey
in cooperation with U. S. Corps of Engineers
Revised in cooperation with State of Ohio agencies
Control by USGS, NOS/NOAA, and USCE
Topography by photogrammetric methods from aerial photographs
taken 1954. Field checked 1955. Revised from aerial photographs
taken 1964. Field checked 1965
Polyconic projection, 10,000-foot grid ticks based on Ohio
coordinate system, south zone 1000-meter Universal Transverse
Mercator grid ticks, zone 16, shown in blue. 1927 North
American Datum. To place on the predicted North American
Datum 1983 move the projection lines 3 meters south and
6 meters west as shown by dashed corner ticks
Red tint indicates areas in which only landmark buildings are shown
Area west of the Little Miami River lies within the Miami
Land lines based on the Great Miami River Base
Area east of the Little Miami River lies within the Virginia Military District
There may be private inholdings within the boundaries of
the National or State reservations shown on this map
Purple tint indicates extension of urban areas

UTM GRID AND 1987 MAGNETIC NORTH
DECLINATION AT CENTER OF SHEET

SCALE 1:24,000
1 1000 0 1000 2000 3000 4000 5000 6000 7000 FEET
1 1 2 3 4 5 6 7 8 9 10 KILOMETER

CONTOUR INTERVAL 10 FEET
NATIONAL GEODETIC VERTICAL DATUM OF 1929

THIS MAP COMPLIES WITH NATIONAL MAP ACCURACY STANDARDS
FOR SALE BY U. S. GEOLOGICAL SURVEY
DENVER, COLORADO 80225 OR RESTON, VIRGINIA 22092
A FOLDER DESCRIBING TOPOGRAPHIC MAPS AND SYMBOLS IS AVAILABLE ON REQUEST



ROAD CLASSIFICATION
Primary highway, hard surface
Secondary highway, hard surface
Light-duty road, hard or improved surface
Unimproved road
Interstate Route
U. S. Route
State Route

Revisions shown in purple and woodland compiled in cooperation
with State of Ohio agencies from aerial photographs taken 1984
and other sources. This information not field checked
Map edited 1987

BELLBROOK, OHIO
39084-F1-TF-024
1985
PHOTOREVISED 1987
DMA 4163 11 NE-SERIES Y852

AUG 1992