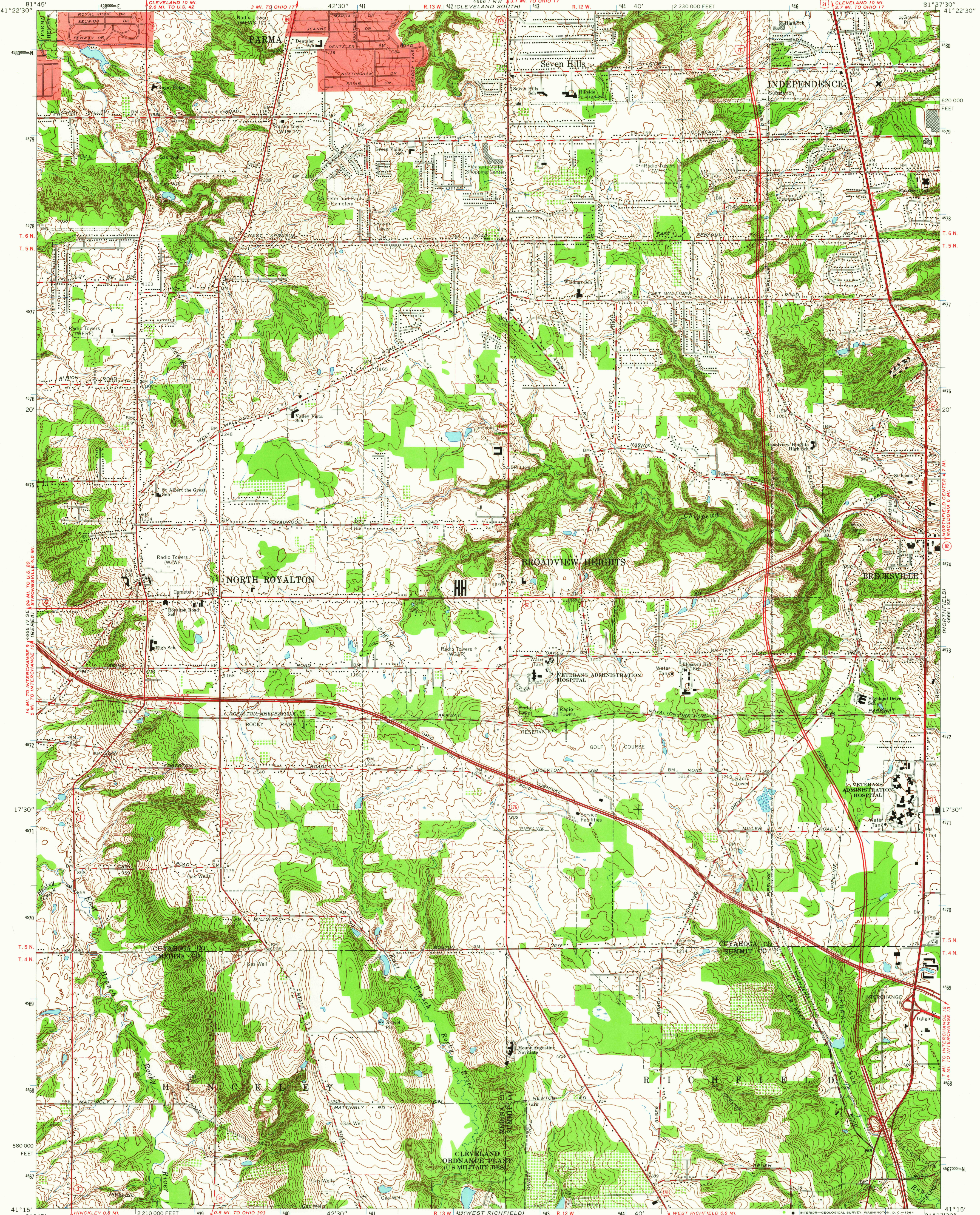
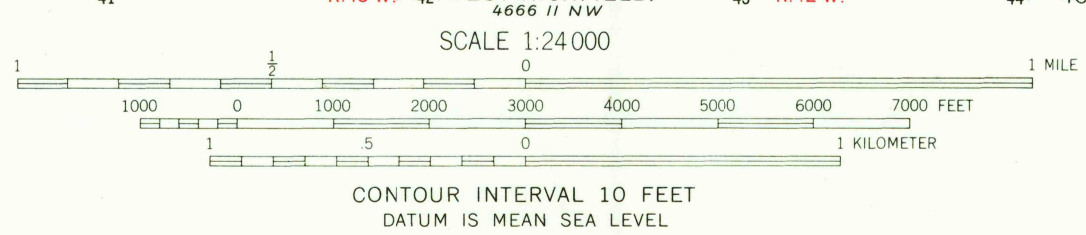
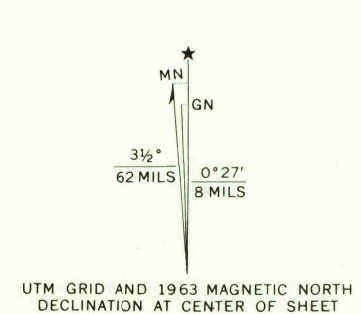


UNITED STATES
DEPARTMENT OF THE INTERIOR
GEOLOGICAL SURVEY

BROADVIEW HEIGHTS QUADRANGLE
OHIO
7.5 MINUTE SERIES (TOPOGRAPHIC)
SW/4 CLEVELAND 15' QUADRANGLE



Mapped, edited, and published by the Geological Survey
Revised in cooperation with State of Ohio agencies
Control by USGS, USC&GS, and Cleveland Regional Geodetic Survey
Topography by photogrammetric methods from aerial photographs
taken 1951. Field checked 1953. Revised from aerial
photographs taken 1962. Field checked 1963
Polyconic projection. 1927 North American datum
10,000-foot grid based on Ohio coordinate system, north zone
1000-meter Universal Transverse Mercator grid ticks,
zone 17, shown in blue
Fine red dashed lines indicate selected fence and field lines where
generally visible on aerial photographs. This information is unchecked
Red tint indicates areas in which only landmark buildings are shown
Entire area lies within the Connecticut Western Reserve. Land lines
established by private subdivision of the Connecticut Western Reserve



USGS
Historical File
Topographic Division

QUADRANGLE LOCATION

ROAD CLASSIFICATION

Heavy-duty	Light-duty
Medium-duty	Unimproved dirt
Interstate Route	U.S. Route
	State Route

BROADVIEW HEIGHTS, OHIO
SW/4 CLEVELAND 15' QUADRANGLE
N4115-W8137.5/7.5
1963
AMS 4666 1 SW-SERIES V852

THIS MAP COMPLIES WITH NATIONAL MAP ACCURACY STANDARDS
FOR SALE BY U. S. GEOLOGICAL SURVEY, WASHINGTON 25, D. C.
A FOLDER DESCRIBING TOPOGRAPHIC MAPS AND SYMBOLS IS AVAILABLE ON REQUEST

AUG 4 1964
2905