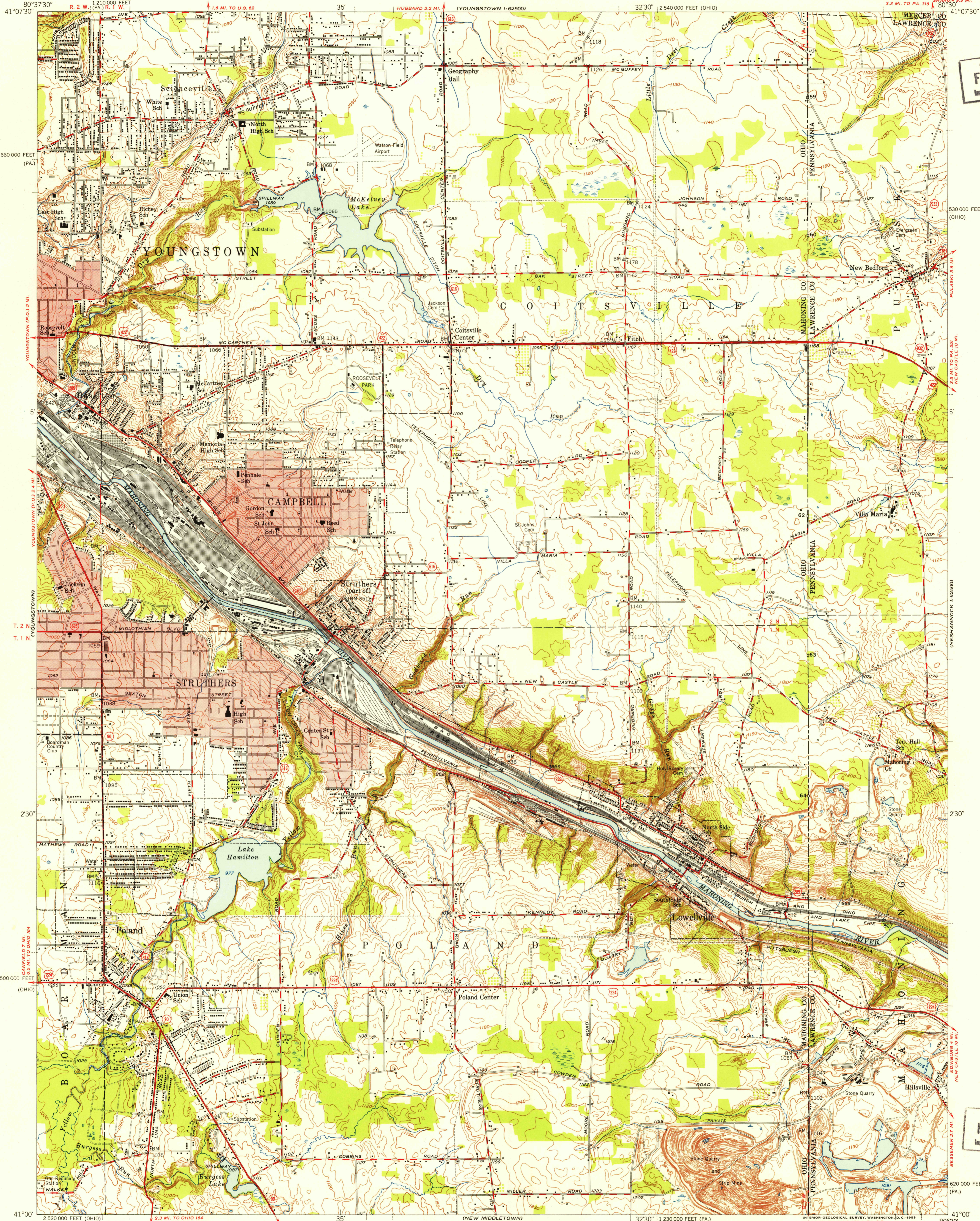


UNITED STATES
DEPARTMENT OF THE INTERIOR
GEOLOGICAL SURVEY

MAHONING COUNTY
OFFICE OF THE COUNTY ENGINEER

CAMPBELL QUADRANGLE
OHIO-PENNSYLVANIA
7.5 MINUTE SERIES (TOPOGRAPHIC)
SE/4 YOUNGSTOWN 15' QUADRANGLE

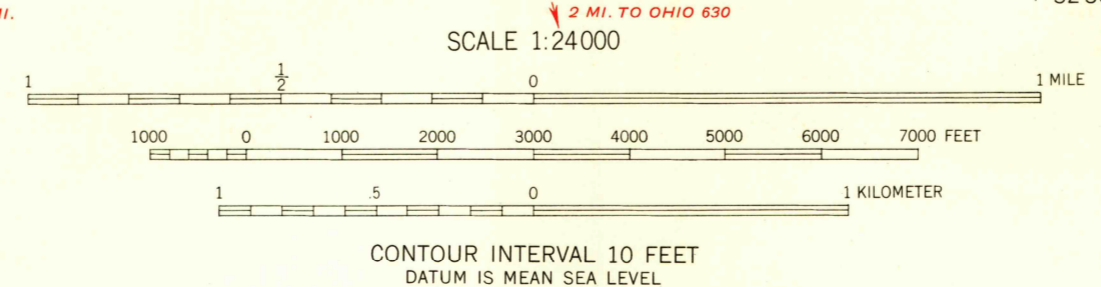


U.S.G.S.
FILE COPY
Inspection and Editing

U.S.G.S.
FILE COPY
Inspection and Editing

Control by USGS, USC&GS, and Mahoning County
Topography from aerial photographs by stereoplanigraph
and by plane-table surveys 1951. Aerial photographs taken 1950
Polyconic projection. 1927 North American datum
10,000-foot grids based on Ohio coordinate system,
north zone, and Pennsylvania coordinate system, south zone
Red tint indicates areas in which only
landmark buildings are shown
Ohio portion lies within Connecticut Reserve

APPROXIMATE MEAN
DECLINATION, 1951



ROAD CLASSIFICATION
Heavy-duty 4 LANE 16 LANE Light-duty
Medium-duty 4 LANE 16 LANE Unimproved dirt
U.S. Route State Route



USGS
Historical File
Topographic Division

CAMPBELL, OHIO-PA.
SE/4 YOUNGSTOWN 15' QUADRANGLE
N4100-W8030/7.5

1951

THIS MAP COMPLIES WITH NATIONAL MAP ACCURACY STANDARDS
FOR SALE BY U.S. GEOLOGICAL SURVEY, WASHINGTON 25, D. C.
A FOLDER DESCRIBING TOPOGRAPHIC MAPS AND SYMBOLS IS AVAILABLE ON REQUEST

MAY 28 1953
4255