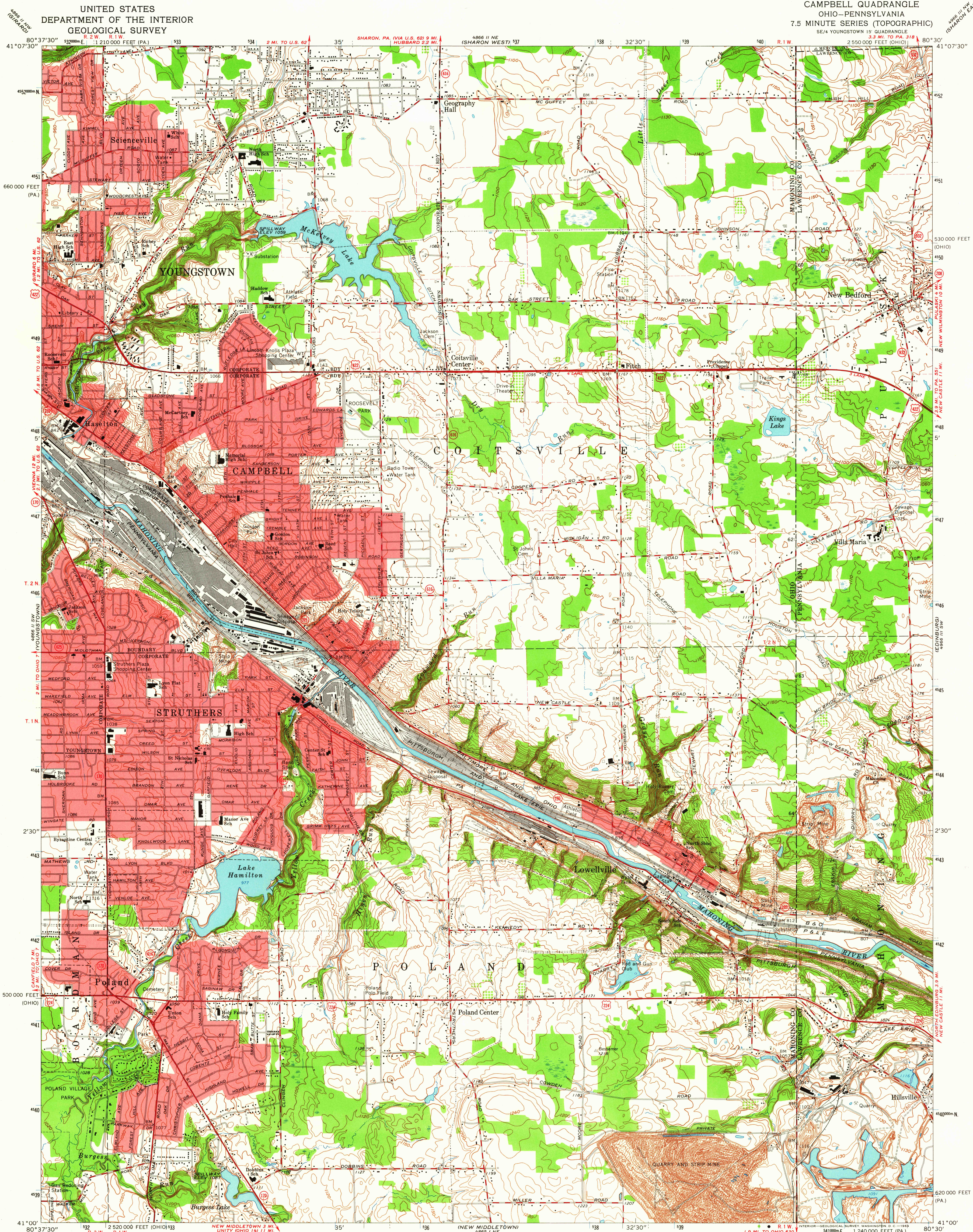
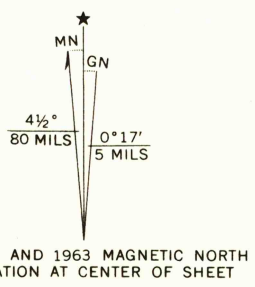


UNITED STATES  
DEPARTMENT OF THE INTERIOR  
GEOLOGICAL SURVEY

CAMPBELL QUADRANGLE  
OHIO-PENNSYLVANIA  
7.5 MINUTE SERIES (TOPOGRAPHIC)



Mapped, edited, and published by the Geological Survey  
in cooperation with County of Mahoning  
Revised in cooperation with State of Ohio agencies  
Control by USGS, USC&GS, and County of Mahoning  
Topography by photogrammetric methods from aerial photographs taken  
1950 and planetable surveys 1951. Revised from aerial photographs  
taken 1962. Field checked 1963  
Polyconic projection. 1927 North American datum  
10,000-foot grids based on Ohio coordinate system, north zone,  
and Pennsylvania coordinate system, south zone  
1000-meter Universal Transverse Mercator grid ticks,  
zone 17, shown in blue  
Fine red dashed lines indicate selected fence and field lines where  
generally visible on aerial photographs. This information is unchecked  
Red tint indicates areas in which only landmark buildings are shown  
Ohio area lies within the Connecticut Western Reserve. Land lines  
established by private subdivision of the Connecticut Western Reserve



THIS MAP COMPLIES WITH NATIONAL MAP ACCURACY STANDARDS  
FOR SALE BY U.S. GEOLOGICAL SURVEY, WASHINGTON 25, D. C.  
A FOLDER DESCRIBING TOPOGRAPHIC MAPS AND SYMBOLS IS AVAILABLE ON REQUEST

ROAD CLASSIFICATION  
Heavy-duty ——— Light-duty ———  
Medium-duty ——— Unimproved dirt ———  
U. S. Route ——— State Route ———



CAMPBELL, OHIO-PA.  
SE/4 YOUNGSTOWN 15' QUADRANGLE  
N4100-W8030/7.5

1963

AMS 4866 II SE-SERIES V852

JUL 7 1964

3595