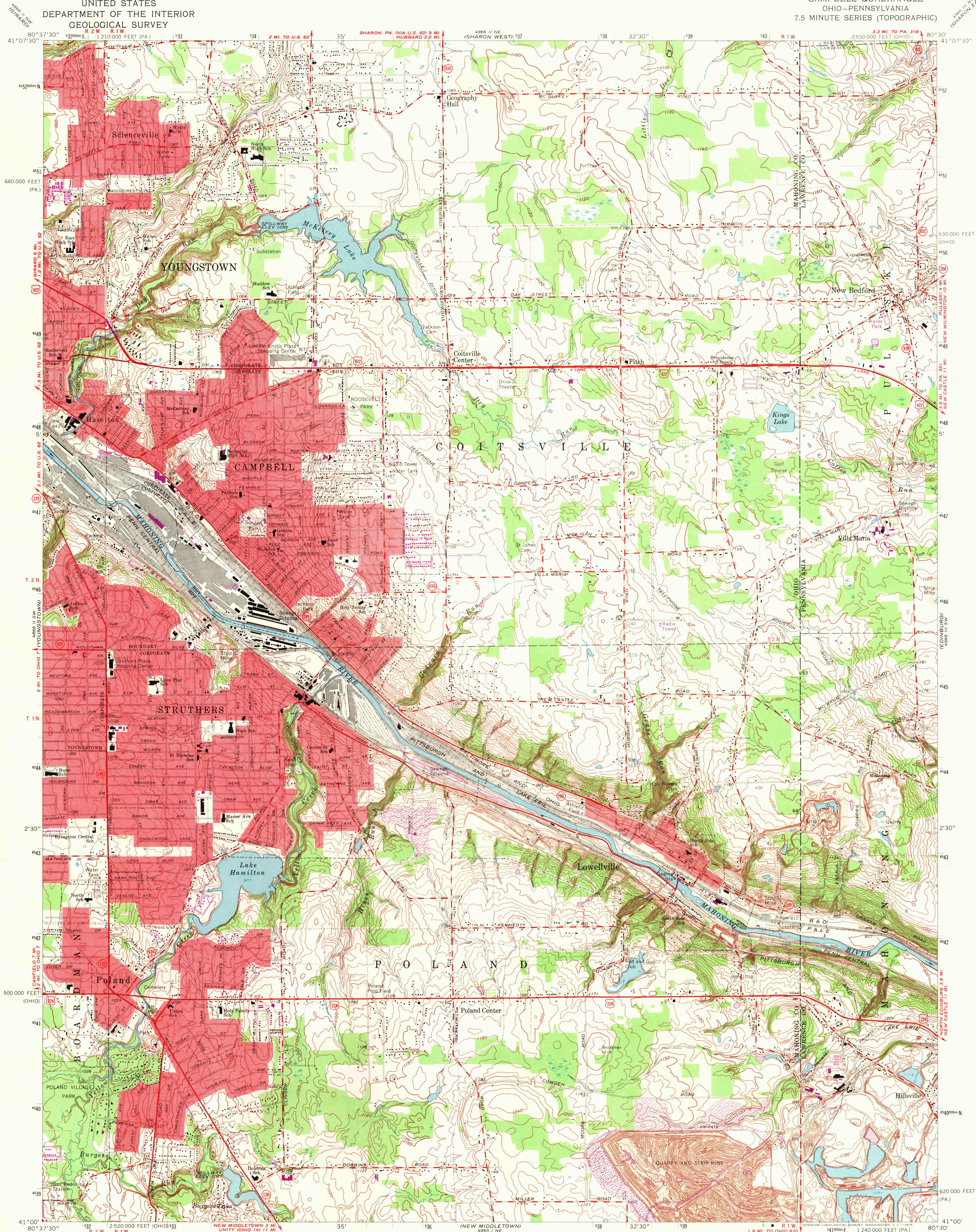
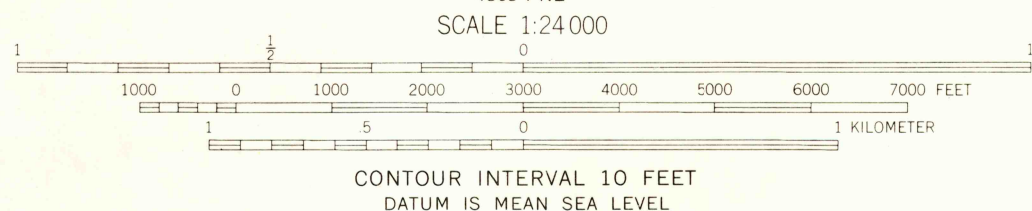


UNITED STATES
DEPARTMENT OF THE INTERIOR
GEOLOGICAL SURVEY

CAMPBELL QUADRANGLE
OHIO-PENNSYLVANIA
7.5 MINUTE SERIES (TOPOGRAPHIC)



Mapped, edited, and published by the Geological Survey
in cooperation with County of Mahoning
Revised in cooperation with State of Ohio agencies
Control by USGS, USC&GS, and County of Mahoning
Topography by photogrammetric methods from aerial photographs taken
1950 and planimetric surveys 1951. Revised from aerial photographs
taken 1962. Field checked 1963.
Polyconic projection, 1927 North American datum
10,000-foot grid based on Ohio coordinate system, north zone,
and Pennsylvania coordinate system, south zone
1000-meter Universal Transverse Mercator grid ticks,
zone 17, shown in blue
Fine red dashed lines indicate selected fence and field lines where
generally visible on aerial photographs. This information is unchecked
Red tint indicates areas in which only landmark buildings are shown
Ohio area lies within the Connecticut Western Reserve. Land lines
established by private subdivision of the Connecticut Western Reserve



USGS
Historical File
Topographic Division

ROAD CLASSIFICATION
Heavy-duty ——— Light-duty ———
Medium-duty ——— Unimproved dirt ———
U.S. Route ——— State Route ———



U.S.G.S.
FILE COPY
TOPOGRAPHIC DIVISION

CAMPBELL, OHIO-PA.
N4100-W8030/7.5
1963
PHOTO-REVISED 1970
AMS 4866 II SE-SERIES Y852

THIS MAP COMPLIES WITH NATIONAL MAP ACCURACY STANDARDS
FOR SALE BY U.S. GEOLOGICAL SURVEY, WASHINGTON, D. C. 20242
A FOLDER DESCRIBING TOPOGRAPHIC MAPS AND SYMBOLS IS AVAILABLE ON REQUEST

Revisions shown in purple compiled in cooperation with
State of Ohio agencies from aerial photographs taken
This information not field checked

3995
FEB 10 1971