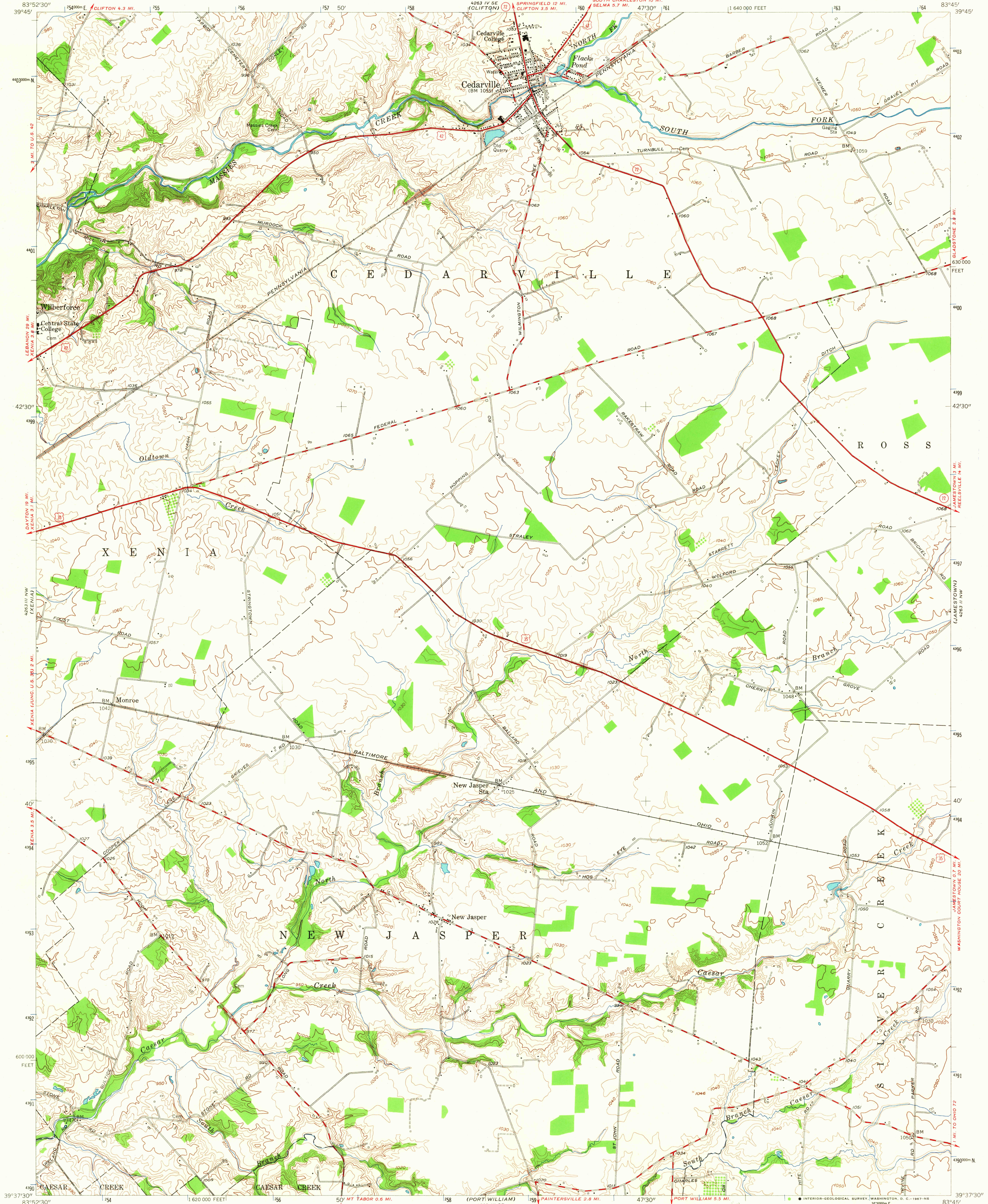


UNITED STATES  
DEPARTMENT OF THE INTERIOR  
GEOLOGICAL SURVEY

UNITED STATES  
DEPARTMENT OF THE ARMY  
CORPS OF ENGINEERS

CEDARVILLE QUADRANGLE  
OHIO—GREENE CO.  
7.5 MINUTE SERIES (TOPOGRAPHIC)  
NE/4 XENIA 15' QUADRANGLE



Mapped, edited, and published by the Geological Survey  
Control by USGS and USACE

Topography from aerial photographs by stereophotogrammetric  
methods. Aerial photographs taken 1954. Field check 1955

Polyconic projection. 1927 North American datum  
10,000-foot grid based on Ohio coordinate system,  
south zone

Unchecked elevations are shown in brown

1000-meter Universal Transverse Mercator grid ticks,  
zone 17, shown in blue

UTM GRID AND 1955 MAGNETIC NORTH  
DECLINATION AT CENTER OF SHEET



CONTOUR INTERVAL 10 FEET  
DATUM IS MEAN SEA LEVEL

THIS MAP COMPLIES WITH NATIONAL MAP ACCURACY STANDARDS  
FOR SALE BY U.S. GEOLOGICAL SURVEY, WASHINGTON, D.C. 20242  
A FOLDER DESCRIBING TOPOGRAPHIC MAPS AND SYMBOLS IS AVAILABLE ON REQUEST

USGS  
Historical File  
Topographic Division



U.S.G.S.  
FILE COPY  
TOPOGRAPHIC DIVISION

ROAD CLASSIFICATION  
Heavy-duty ——— Light-duty ———  
Medium-duty ——— Unimproved dirt ———  
U.S. Route ——— State Route ———

CEDARVILLE, OHIO  
NE/4 XENIA 15' QUADRANGLE  
N 3937.5 - W 8345.7/5

1955

AMS 4263 III NE—SERIES V852

3330  
JUL 12 1967