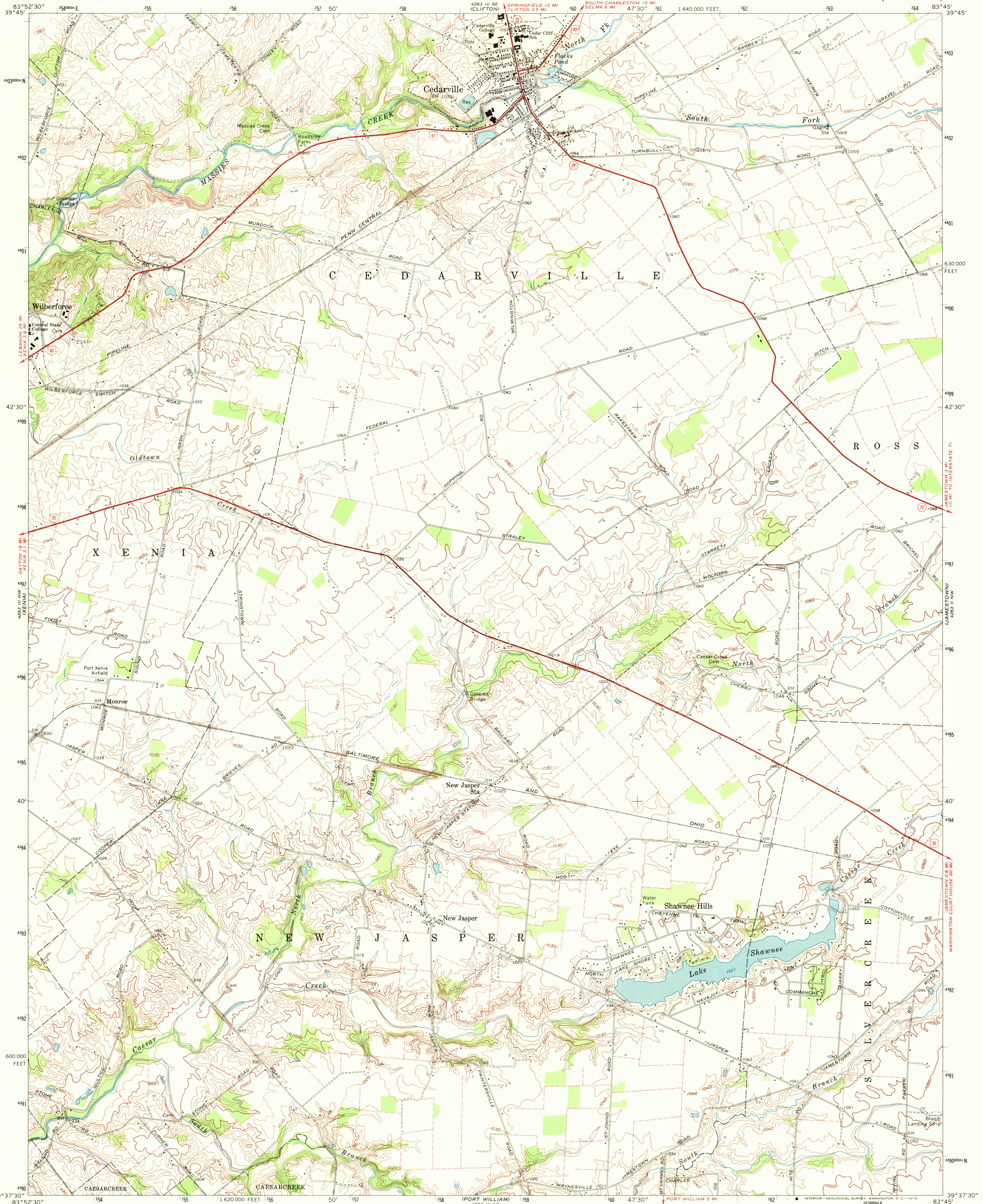


UNITED STATES
DEPARTMENT OF THE INTERIOR
GEOLOGICAL SURVEY

CEDARVILLE QUADRANGLE
OHIO—GREENE CO.
7.5 MINUTE SERIES (TOPOGRAPHIC)



Mapped, edited, and published by the Geological Survey
in cooperation with the Army Map Service
Revised in cooperation with State of Ohio agencies
Control by USGS and USC&GS
Topography by photogrammetric methods from aerial photographs
taken 1954. Field checked 1955. Revised from aerial
photographs taken 1968. Field checked 1968
Polyconic projection. 1927 North American datum.
10,000-foot grid based on Ohio coordinate system, south zone
1000-meter Universal Transverse Mercator grid ticks,
zone 17, shown in blue
Fine red dashed lines indicate selected fence and field lines where
generally visible on aerial photographs. This information is unchecked
Entire area lies within the Virginia Military District

UTM GRID AND 1968 MAGNETIC NORTH
DECLINATION AT CENTER OF SHEET
1° 48' 18" M
32 MILES

SCALE 1:24,000
CONTOUR INTERVAL 10 FEET
DATUM IS MEAN SEA LEVEL
1 000 0 1000 2000 3000 4000 5000 6000 7000 FEET
1 KILOMETER

USGS
Historical File
Topographic Division



ROAD CLASSIFICATION
Primary highway, all weather, hard surface
Light-duty road, all weather, improved surface
Unimproved road, fair or dry weather
U. S. Route
State Route

U.S.G.S.
FILE COPY
TOPOGRAPHIC DIVISION

CEDARVILLE, OHIO
N3937.5—W8345.7.5
1968
AMS 4263 III NE—SERIES V852

SEP 1 1970