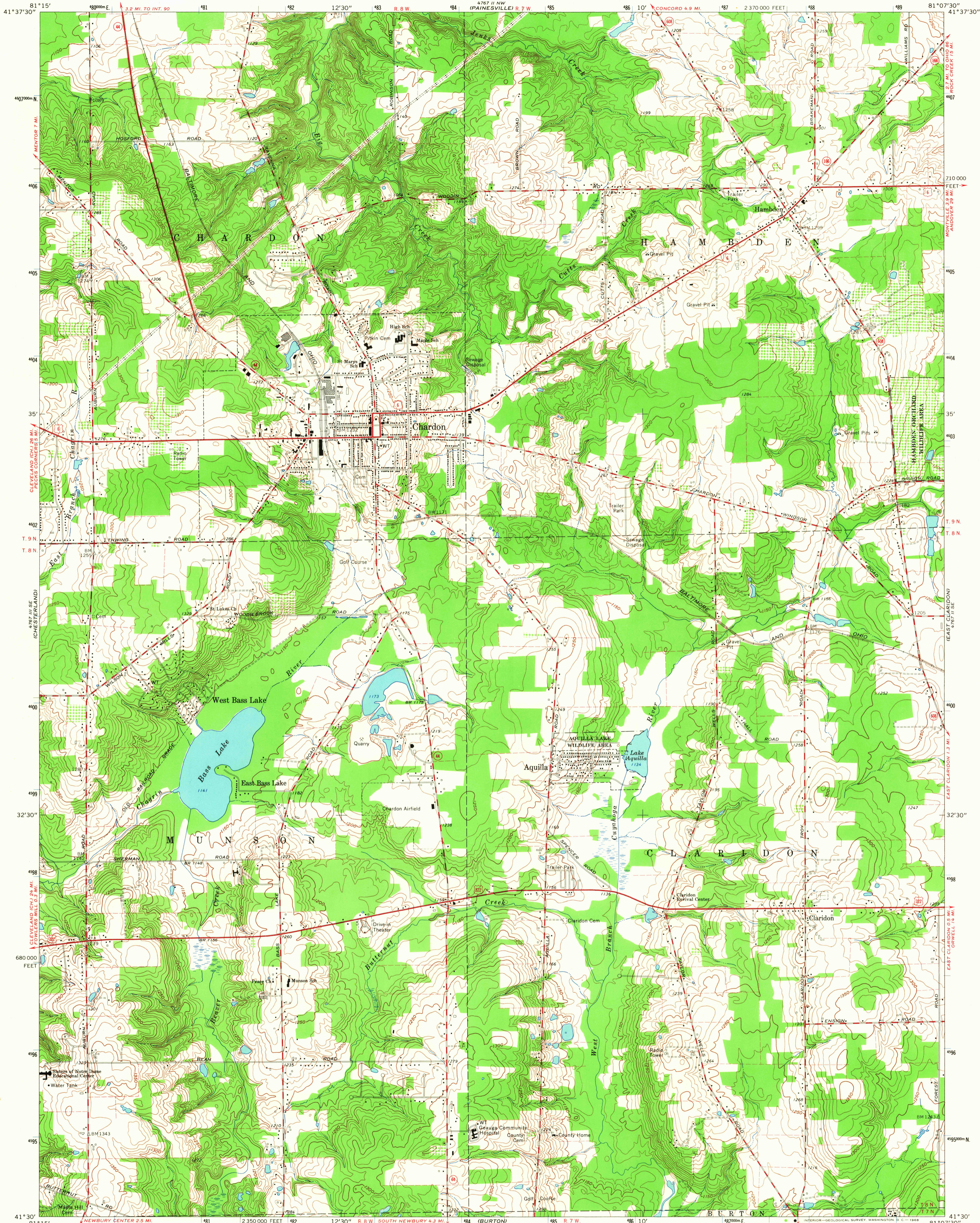
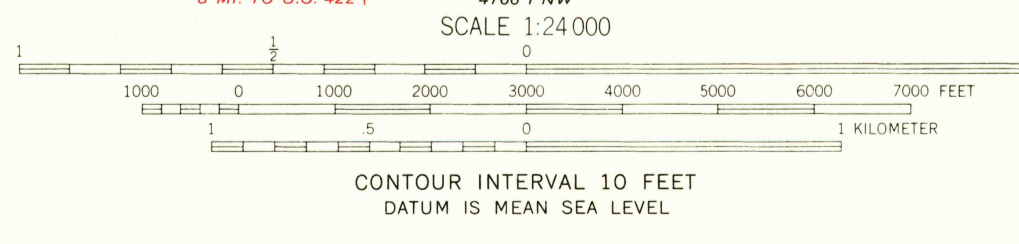


UNITED STATES
DEPARTMENT OF THE INTERIOR
GEOLOGICAL SURVEY

CHARDON QUADRANGLE
OHIO—GEAUGA CO.
7.5 MINUTE SERIES (TOPOGRAPHIC)
SW/4 CHARDON 15' QUADRANGLE



Mapped, edited, and published by the Geological Survey
Revised in cooperation with State of Ohio agencies
Control by USGS and USC&GS
Topography by photogrammetric methods from aerial photographs
taken 1952. Field checked 1953. Revised 1966
Polyconic projection. 1927 North American datum
10,000-foot grid based on Ohio coordinate system north zone
1000-meter Universal Transverse Mercator grid ticks,
zone 17, shown in blue
Fine red dashed lines indicate selected fence and field lines where
generally visible on aerial photographs. This information is unchecked
Entire area lies within the Connecticut Western Reserve
and lines established by private subdivision of the
Connecticut Western Reserve



USGS
Historical File
Topographic Division

ROAD CLASSIFICATION	
Heavy-duty	Light-duty
Medium-duty	Unimproved dirt
U.S. Route	State Route

U.S.G.S.
FILE COPY
TOPOGRAPHIC DIVISION

CHARDON, OHIO
SW/4 CHARDON 15' QUADRANGLE
N4130—W8107.5/7.5
1966
AMS 4767 II SW—SERIES V852

THIS MAP COMPLIES WITH NATIONAL MAP ACCURACY STANDARDS
FOR SALE BY U.S. GEOLOGICAL SURVEY, WASHINGTON, D. C. 20242
A FOLDER DESCRIBING TOPOGRAPHIC MAPS AND SYMBOLS IS AVAILABLE ON REQUEST

3255
SEP 20 1968