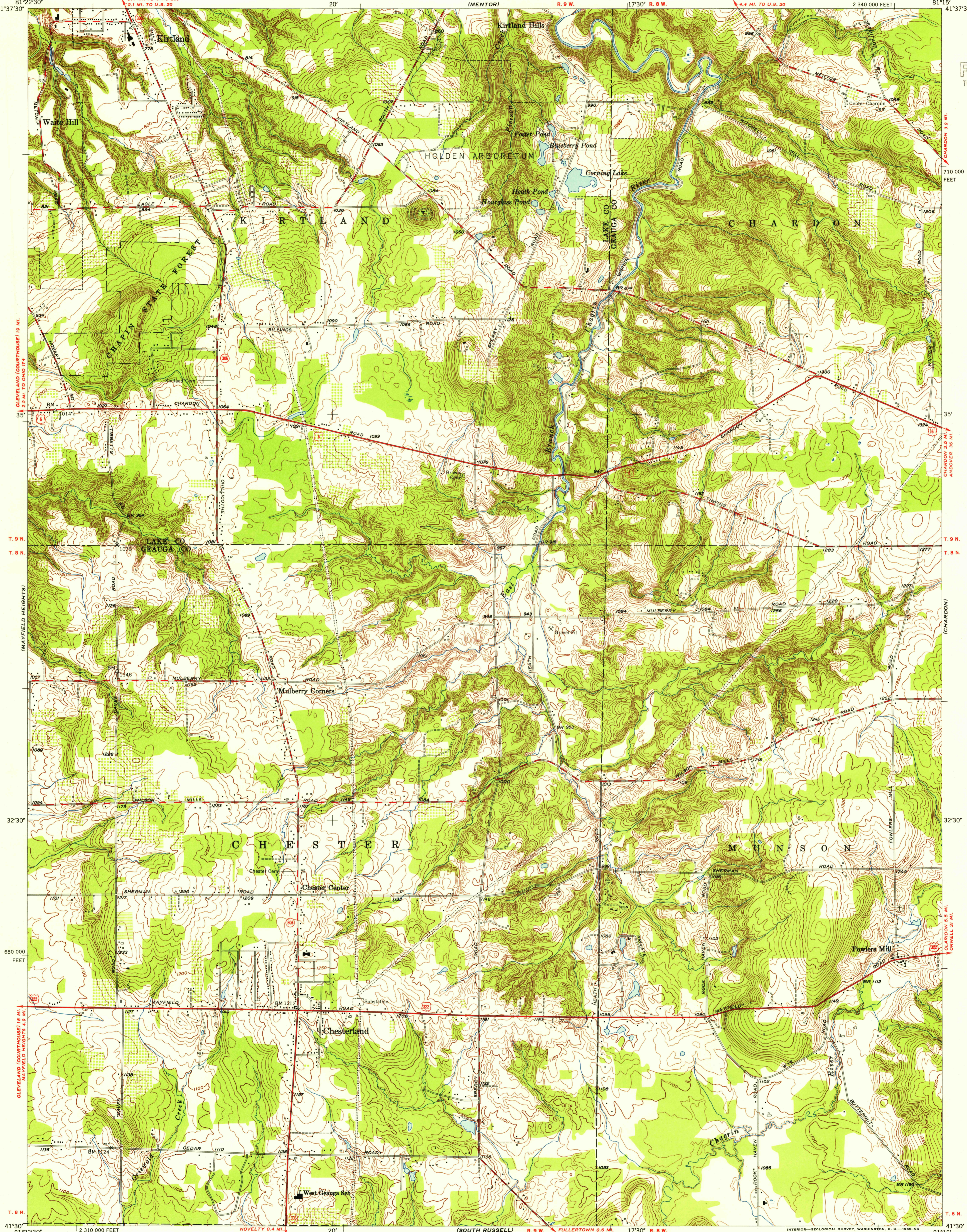


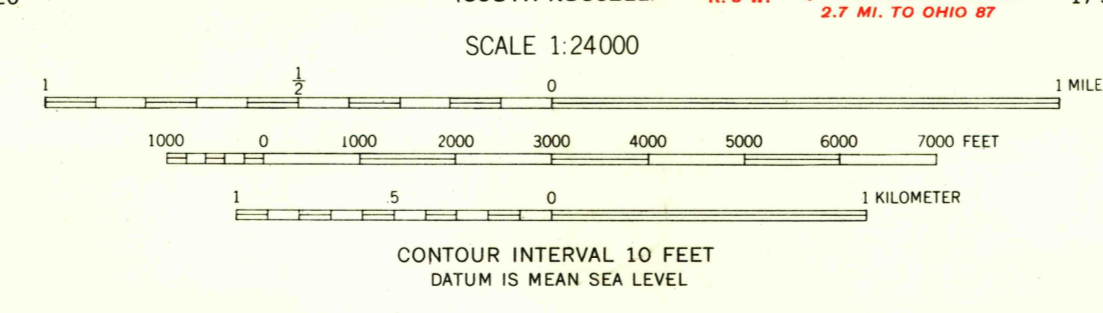
U.S.G.S.
FILE COPY
TOPOGRAPHIC DIVISION



(EASTLAKE)
81°22'30"
41°37'30"
CLEVELAND (COURTHOUSE) 19 MI.
5.3 MI. TO OHIO 74
T. 9 N.
T. 8 N.
(MAYFIELD HEIGHTS)
35'
32'30"
680 000 FEET
CLEVELAND (COURTHOUSE) 18 MI.
MAYFIELD HEIGHTS 4.9 MI.
T. 8 N.
41°30'
81°22'30"

(MENTOR)
R. 9 W.
17°30' R. 8 W.
4.4 MI. TO U.S. 20
2 340 000 FEET
81°15'
41°37'30"
CHARDON 3.9 MI.
710 000 FEET
CHARDON 3.8 MI.
AURORA 25 MI.
CHARDON 6.5 MI.
GAINWELL 21 MI.
T. 8 N.
T. 8 N.
81°15'

Mapped, edited, and published by the Geological Survey
Control by USGS, USC&GS, U. S. Lake Survey, and Cleveland
Regional Geodetic Survey
Topography from aerial photographs by Kelsch plotter
Aerial photographs taken 1952. Field check 1953
Polyconic projection. 1927 North American datum
10,000-foot grid based on Ohio coordinate system,
north zone
Entire area lies within the Connecticut Western Reserve
Land lines were established by the Connecticut Land Company



USGS
Historical File
Topographic Division

ROAD CLASSIFICATION

Heavy-duty	LANE 6 LANE	Light-duty
Medium-duty	LANE 6 LANE	Unimproved dirt

U. S. Route State Route



CHESTERLAND, OHIO
SE/4 MENTOR 15' QUADRANGLE
N4130-W8115/7.5

1953

U.S.G.S.
FILE COPY
TOPOGRAPHIC DIVISION

THIS MAP COMPLIES WITH NATIONAL MAP ACCURACY STANDARDS
FOR SALE BY U. S. GEOLOGICAL SURVEY, WASHINGTON 25, D. C.
A FOLDER DESCRIBING TOPOGRAPHIC MAPS AND SYMBOLS IS AVAILABLE ON REQUEST