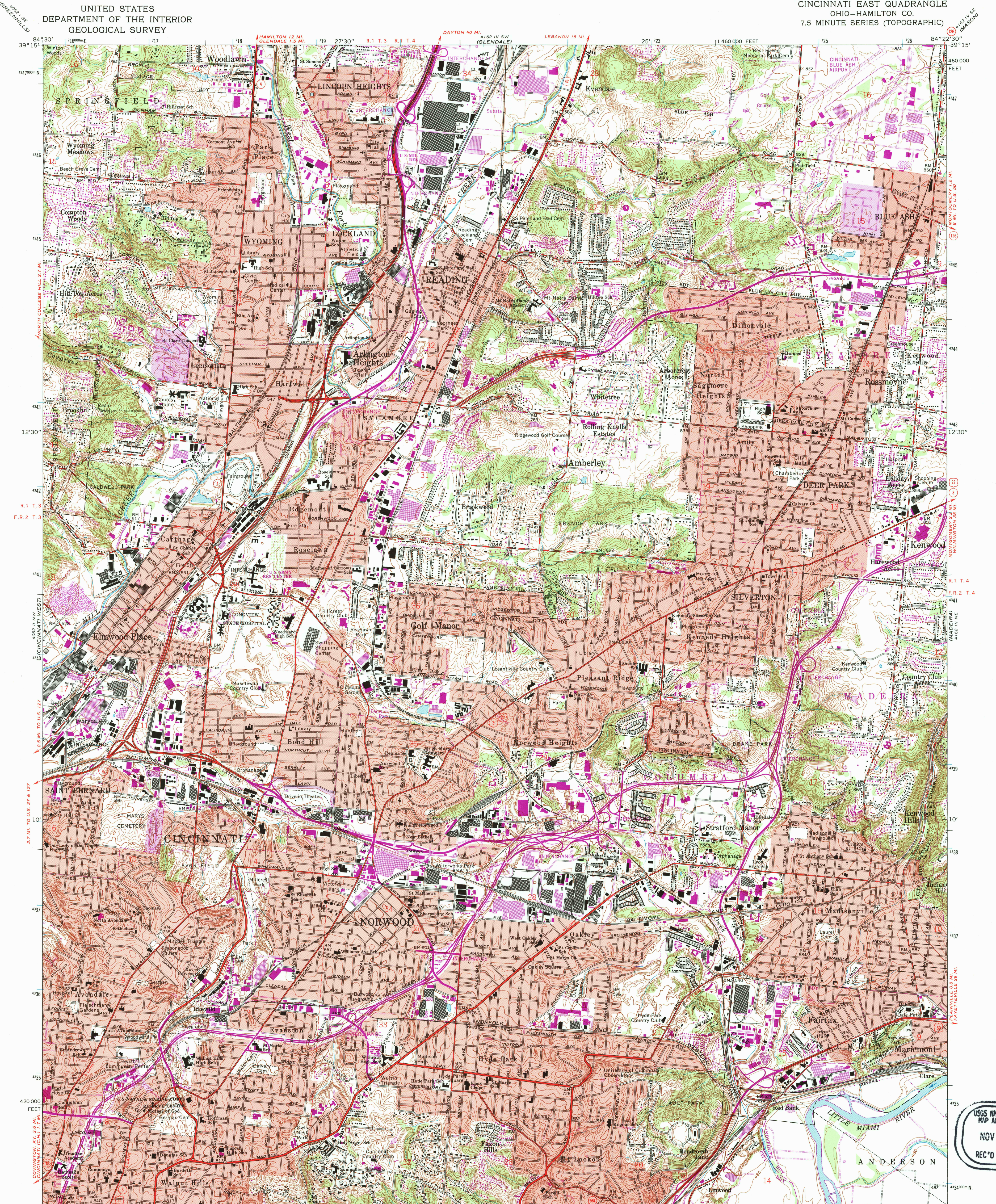


UNITED STATES  
DEPARTMENT OF THE INTERIOR  
GEOLOGICAL SURVEY

CINCINNATI EAST QUADRANGLE  
OHIO—HAMILTON CO.  
7.5 MINUTE SERIES (TOPOGRAPHIC)



USGS AND HISTORICAL  
MAP ARCHIVES  
NOV 03 1995  
REC'D FILE COPY

Mapped, edited, and published by the Geological Survey  
Control by USGS, NOS/NOAA, USCE, and City of Cincinnati  
Topography by photogrammetric methods from aerial photographs  
taken 1949 and in part by City of Cincinnati. Field checked  
1953. Revised 1961.  
Polyconic projection. 10,000-foot grid ticks based on Ohio  
coordinate system, south zone. 1000-meter Universal Transverse  
Mercator grid ticks, zone 16, shown in blue. 1927 North  
American Datum. To place on the predicted North American  
Datum 1983 move the projection lines 3 meters south and  
6 meters west as shown by dashed corner ticks.  
Red tint indicates areas in which only landmark buildings are shown.  
Area east of the Little Miami River lies within the Virginia Military  
District. Area west of the Little Miami River lies within the Between  
the Mountains. Land lines based on the Great Miami River Base. Dotted  
land lines established by private subdivision of the Symmes Purchase.  
There may be private inholdings within the boundaries of  
the National or State reservations shown on this map.

SCALE 1:24,000  
CONTOUR INTERVAL 10 FEET  
NATIONAL GEODETIC VERTICAL DATUM OF 1929

ROAD CLASSIFICATION  
Heavy-duty ——— Light-duty ———  
Medium-duty ——— Unimproved dirt ———  
Interstate Route — U.S. Route — State Route —

CINCINNATI EAST, OHIO  
39084-B4-F024  
1961  
PHOTOREVISED 1981  
DMA 4162 III NW—SERIES V852

THIS MAP COMPLIES WITH NATIONAL MAP ACCURACY STANDARDS  
FOR SALE BY U.S. GEOLOGICAL SURVEY  
DENVER, COLORADO 80225, OR RESTON, VIRGINIA 22092  
A FOLDER DESCRIBING TOPOGRAPHIC MAPS AND SYMBOLS IS AVAILABLE ON REQUEST

Revisions shown in purple and woodlawn compiled in cooperation  
with State of Ohio agencies from aerial photographs taken 1979  
and other sources. This information not field checked. Map edited 1981.  
Purple tint indicates extension of urban areas.