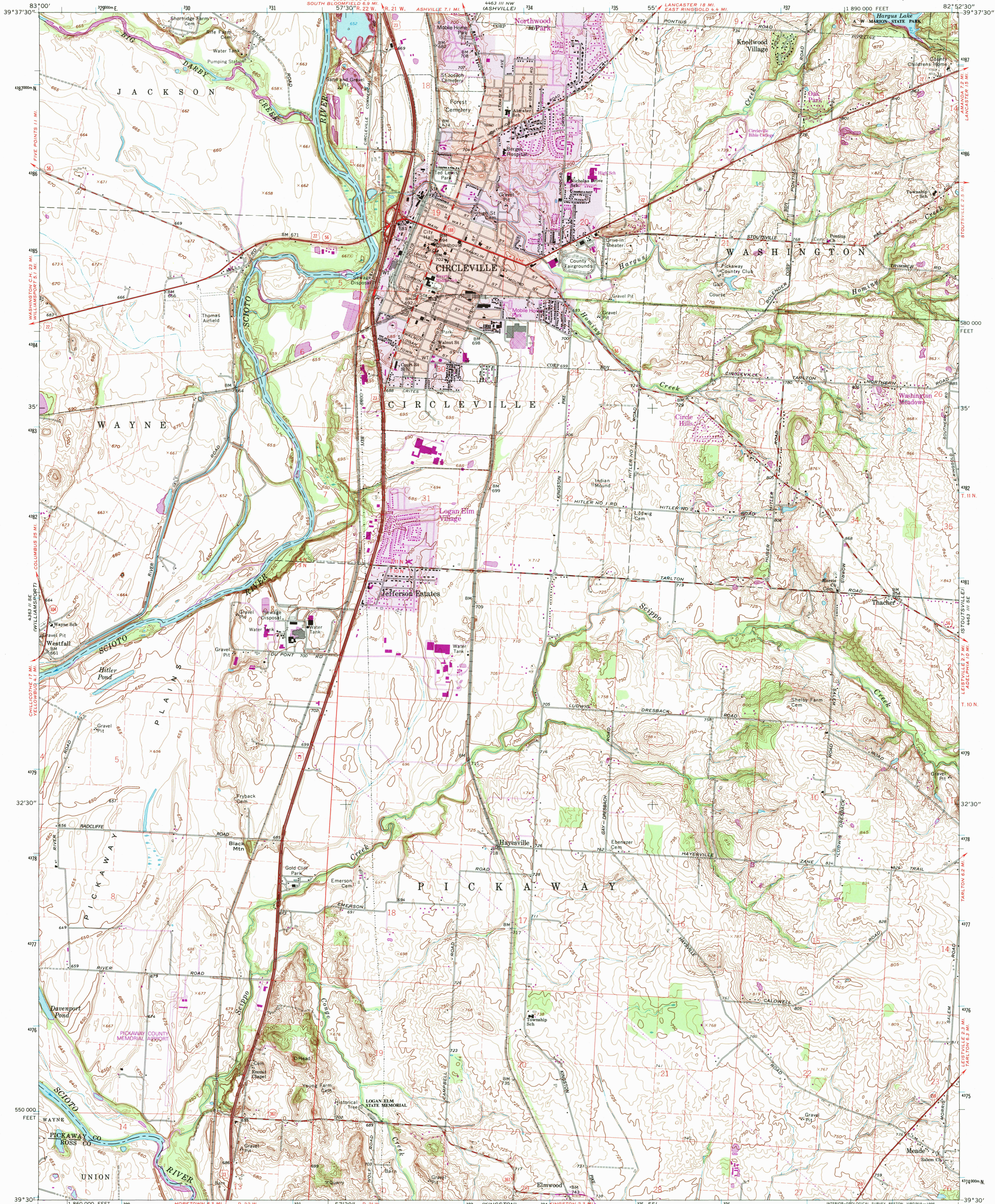


UNITED STATES  
DEPARTMENT OF THE INTERIOR  
GEOLOGICAL SURVEY

CIRCLEVILLE QUADRANGLE  
OHIO  
7.5 MINUTE SERIES (TOPOGRAPHIC)



Produced by the United States Geological Survey  
Control by USGS and NOS/NOAA  
Compiled from aerial photographs taken 1960. Revisions shown in purple and woodland compiled from aerial photographs taken 1991 and 1992 and other sources. Map edited 1995. Conflicts may exist between some updated features and previously mapped contours.  
North American Datum of 1927 (NAD 27). Projection and 10000-foot ticks: Ohio Coordinate System, south zone (Lambert Conformal Conic).  
Blue 1000-meter Universal Transverse Mercator ticks, zone 17.  
North American Datum of 1983 (NAD 83) is shown by dashed corner ticks. The values of the shift between NAD 27 and NAD 83 for 7.5-minute intersections are obtainable from National Geodetic Survey NADCON software.  
Area west of the Scioto River lies within the Virginia Military District.  
Area within R22W based on the Scioto River Base.  
Area within R21W based on the Ohio River Base.

UTM GRID AND 1995 MAGNETIC NORTH DECLINATION AT CENTER OF SHEET  
MAGNETIC NORTH  
111° 22' 22" N  
38 MILS

SCALE 1:24 000  
1 000 2000 3000 4000 5000 6000 7000 FEET  
1 KILOMETER  
CONTOUR INTERVAL 5 FEET  
NATIONAL GEODETIC VERTICAL DATUM OF 1929

THIS MAP COMPLIES WITH NATIONAL MAP ACCURACY STANDARDS  
FOR SALE BY U.S. GEOLOGICAL SURVEY  
DENVER, COLORADO 80225, OR RESTON, VIRGINIA 22092  
A FOLDER DESCRIBING TOPOGRAPHIC MAPS AND SYMBOLS IS AVAILABLE ON REQUEST

USGS AND HISTORICAL  
MAP ARCHIVES  
MAY 18 1995  
REC'D FILE COPY



ROAD CLASSIFICATION  
Primary highway, hard surface  
Secondary highway, hard surface  
Unimproved road  
Interstate Route  
U. S. Route  
State Route

CIRCLEVILLE, OH  
39082-E8-TF-024

1961  
REVISED 1995  
DMA 4463 III SW-SERIES V852