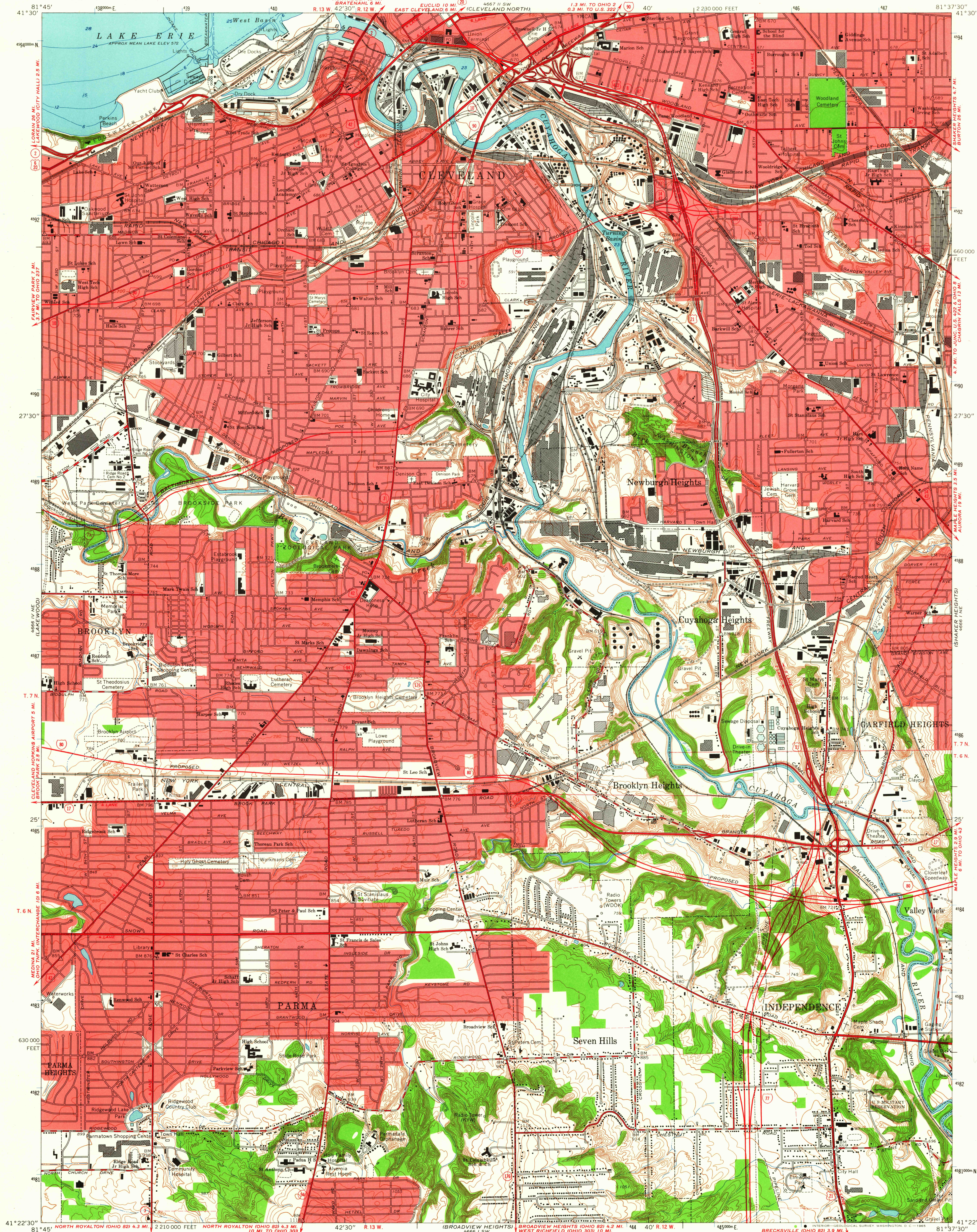


UNITED STATES  
DEPARTMENT OF THE INTERIOR  
GEOLOGICAL SURVEY

CLEVELAND SOUTH QUADRANGLE  
OHIO-CUYAHOGA CO  
7.5 MINUTE SERIES (TOPOGRAPHIC)  
NW 1/4 CLEVELAND 15 QUADRANGLE



Maped, edited, and published by the Geological Survey in cooperation with State of Ohio agencies  
Control by USGS, USCGS, and Cleveland Regional Geodetic Survey  
Topography by photogrammetric methods from aerial photographs taken 1952, and by Cleveland Regional Geodetic Survey 1948-49.  
Field checked 1953. Revised from aerial photographs taken 1962  
Field checked 1963.  
Selected hydrographic data compiled from USLS Charts 35 (1959) and 354 (1962). This information is not intended for navigational purposes  
Polyconic projection. 1927 North American datum  
10,000-foot grid based on Ohio coordinate system, north zone  
1000-meter Universal Transverse Mercator grid ticks, zone 17, shown in blue  
Fine red dashed lines indicate selected fence and field lines where generally visible on aerial photographs. This information is unchecked  
Red tint indicates areas in which only landmark buildings are shown  
Entire area lies within the Connecticut Western Reserve  
Dotted land lines established by private subdivision of the Connecticut Western Reserve

SCALE 1:24,000  
CONTOUR INTERVAL 10 FEET  
DATUM IS MEAN SEA LEVEL  
DEPTH CURVES AND SOUNDINGS IN FEET—DATUM IS LOW WATER 570.5 FEET  
THIS MAP COMPLIES WITH NATIONAL MAP ACCURACY STANDARDS  
FOR SALE BY U. S. GEOLOGICAL SURVEY, WASHINGTON 25, D. C.  
A FOLDER DESCRIBING TOPOGRAPHIC MAPS AND SYMBOLS IS AVAILABLE ON REQUEST

USGS  
Historical File  
Topographic Division  
ROAD CLASSIFICATION  
Heavy-duty — Light-duty  
Medium-duty — Unimproved dirt  
Interstate Route U. S. Route State Route  
CLEVELAND SOUTH, OHIO  
NW 1/4 CLEVELAND 15 QUADRANGLE  
N4122.5—W8137.5/7.5  
1963  
AMS 4661 NW—SERIES V852

MAR 17 1965  
3455  
U.S.G.S.  
FILE COPY  
TOPOGRAPHIC DIVISION