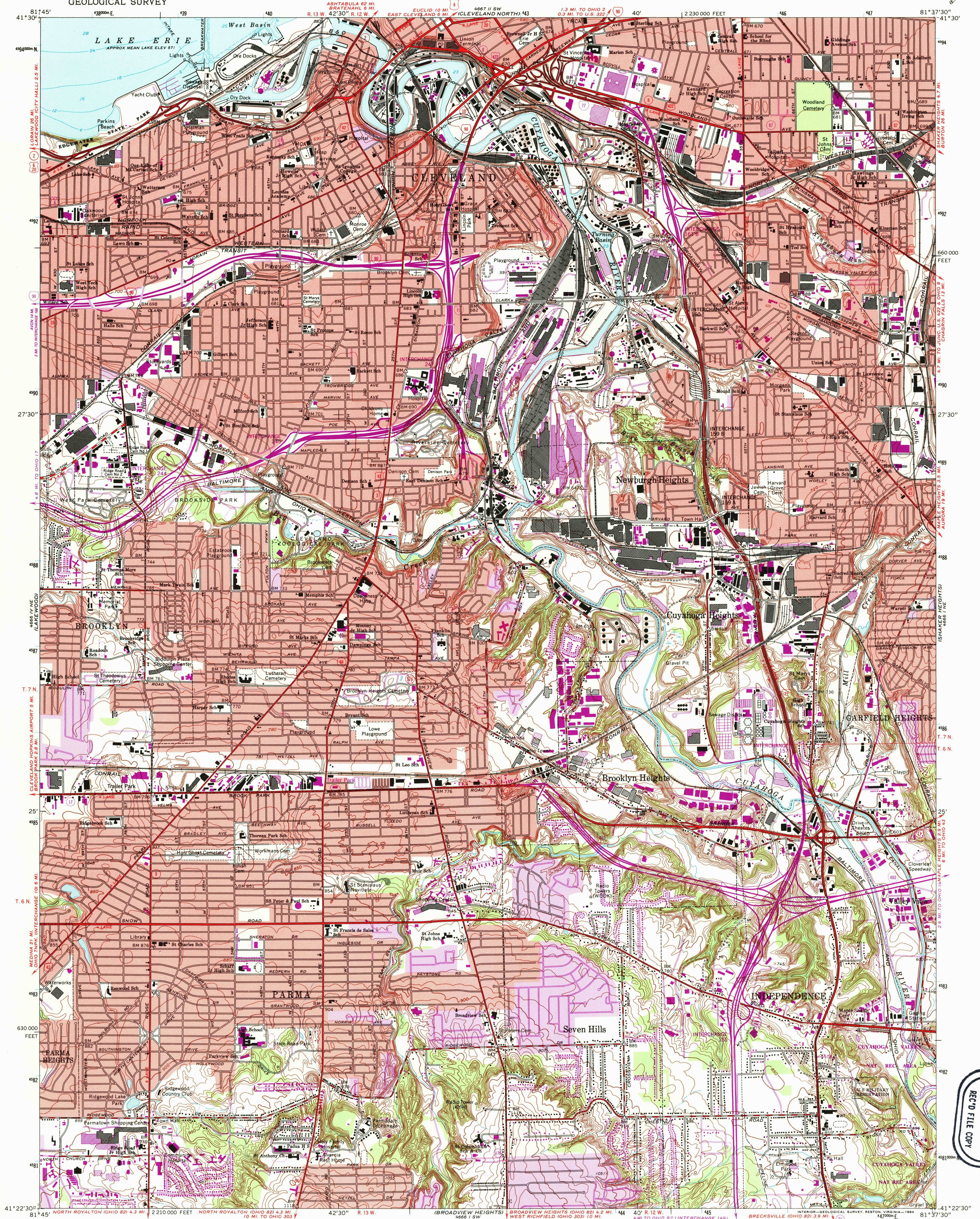


UNITED STATES
DEPARTMENT OF THE INTERIOR
GEOLOGICAL SURVEY

CLEVELAND SOUTH QUADRANGLE
OHIO—CUYAHOGA CO
7.5 MINUTE SERIES (TOPOGRAPHIC)



Maped, edited, and published by the Geological Survey
Revised in cooperation with State of Ohio agencies
Control by USGS, NOS/NOAA, and Cleveland Regional Geologic Survey
Topography by photogrammetric methods from aerial photographs taken
1952, and by Cleveland Regional Geologic Survey, 1948-49
Field checked 1953. Revised from aerial photographs taken 1962
Field checked 1963
Selected hydrographic data compiled from USLS charts 35 (1959) and
354 (1962). This information is not intended for navigational purposes
Polyconic projection. 10,000-foot grid ticks based on Ohio
coordinate system, north zone
1000-meter Universal Transverse Mercator grid ticks,
zone 17, shown in blue
1927 North American Datum
To place on the predicted North American Datum 1983
move the projection lines 2 meters south and
13 meters west as shown by dashed corner ticks
Entire area lies within the Connecticut Western Reserve
Dotted land lines established by private subdivision of the
Connecticut Western Reserve
There may be private inholdings within the boundaries of
the National or State reservations shown on this map

Revisions shown in purple and woodland compiled in cooperation
with State of Ohio agencies from aerial photographs taken
1982 and other sources. This information not field checked
Map edited 1984
Purple tint indicates extension of urban areas

THIS MAP COMPLIES WITH NATIONAL MAP ACCURACY STANDARDS
FOR SALE BY U.S. GEOLOGICAL SURVEY
DENVER, COLORADO 80225, OR RESTON, VIRGINIA 22092
A FOLDER DESCRIBING TOPOGRAPHIC MAPS AND SYMBOLS IS AVAILABLE ON REQUEST

CLEVELAND SOUTH, OHIO
41081-D6-TF-024
1963
PHOTOREVISED 1984
DMA 4666 I NW—SERIES V852

U.S. GEOLOGICAL SURVEY
MAY 1 6 1995
REC'D FILE COPY

