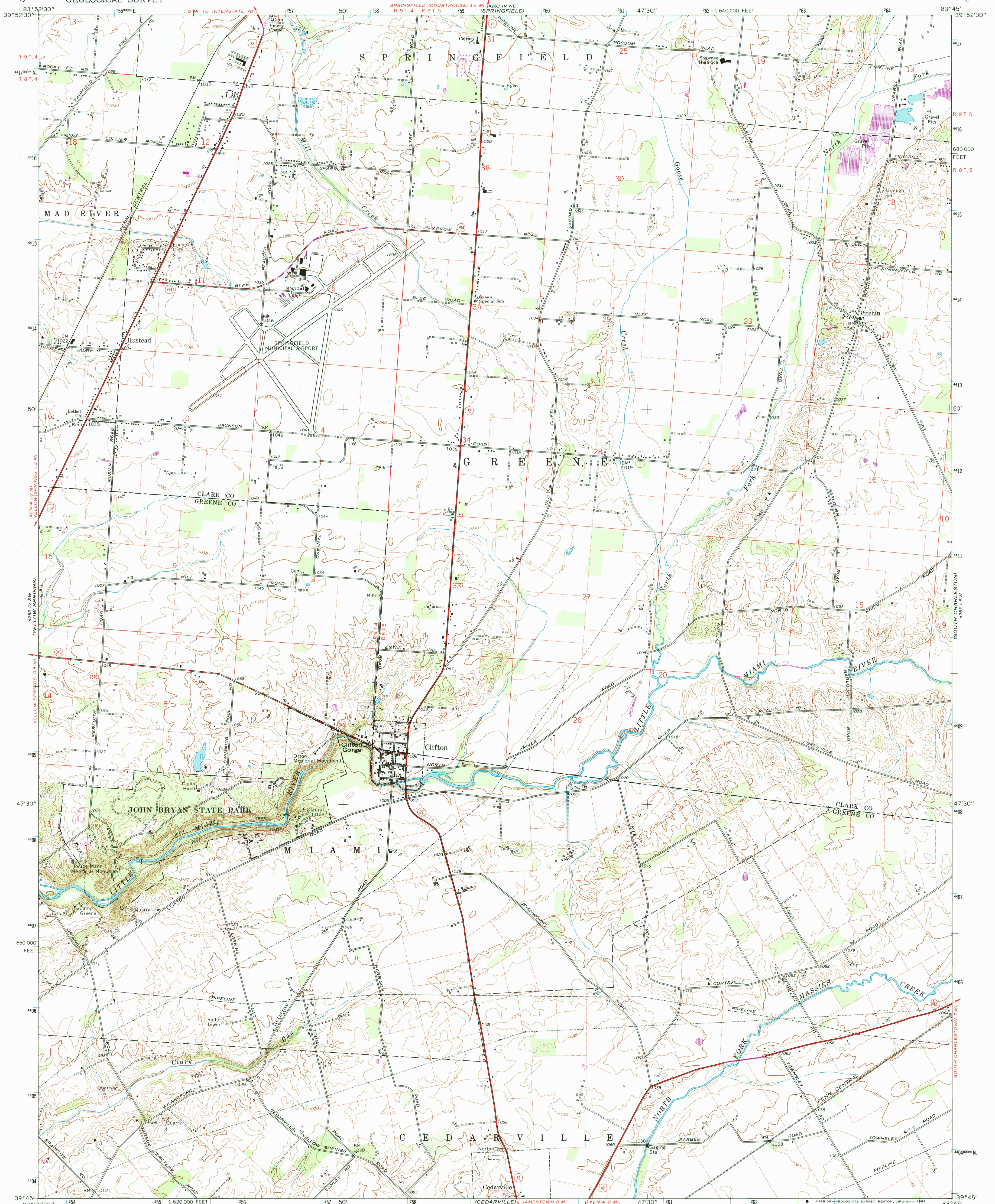
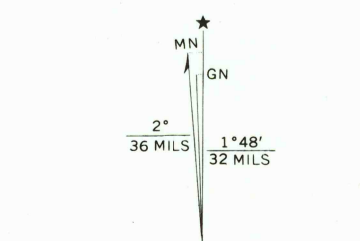


UNITED STATES  
DEPARTMENT OF THE INTERIOR  
GEOLOGICAL SURVEY

CLIFTON QUADRANGLE  
OHIO  
7.5 MINUTE SERIES (TOPOGRAPHIC)



Mapped, edited and published by the Geological Survey in cooperation with the Army Map Service. Revised in cooperation with State of Ohio agencies. Control by USGS and USACGS. Topography by photogrammetric methods from aerial photographs taken 1954. Field checked 1954. Revised from aerial photographs taken 1968. Field checked 1968. Polyconic projection. 1927 North American datum. 10,000-foot grid based on Ohio coordinate system, south zone 1000-meter Universal Transverse Mercator grid ticks, zone 17, shown in blue. The difference between 1927 North American Datum and North American Datum of 1983 (NAD 83) for 7.5-minute intersections is given in USGS Bulletin 1875. The NAD 83 is shown by dashed corner ticks. Area east of the Little Miami River lies within the Virginia Military District. Area west of the Little Miami River lies within the Between the Miamis. Land lines based on the Great Miami River Base.



Map photoinspected 1988  
No major culture or drainage changes observed

THIS MAP COMPLIES WITH NATIONAL MAP ACCURACY STANDARDS  
FOR SALE BY U. S. GEOLOGICAL SURVEY  
DENVER, COLORADO 80225, OR RESTON, VIRGINIA 22092  
A FOLDER DESCRIBING TOPOGRAPHIC MAPS AND SYMBOLS IS AVAILABLE ON REQUEST

Revisions shown in purple compiled in cooperation with State of Ohio agencies from aerial photographs taken 1974. This information not field checked.

ROAD CLASSIFICATION  
Primary highway, all weather, hard surface  
Secondary highway, all weather, hard surface  
Light-duty road, all weather, improved surface  
Unimproved road, fair or dry weather  
U. S. Route  
State Route

CLIFTON, OHIO  
39083 G7-TF-024  
PHOTOINSPECTED 1988  
1968  
PHOTOREVISED 1974  
DMA 4263 IV SE-SERIES V852

