

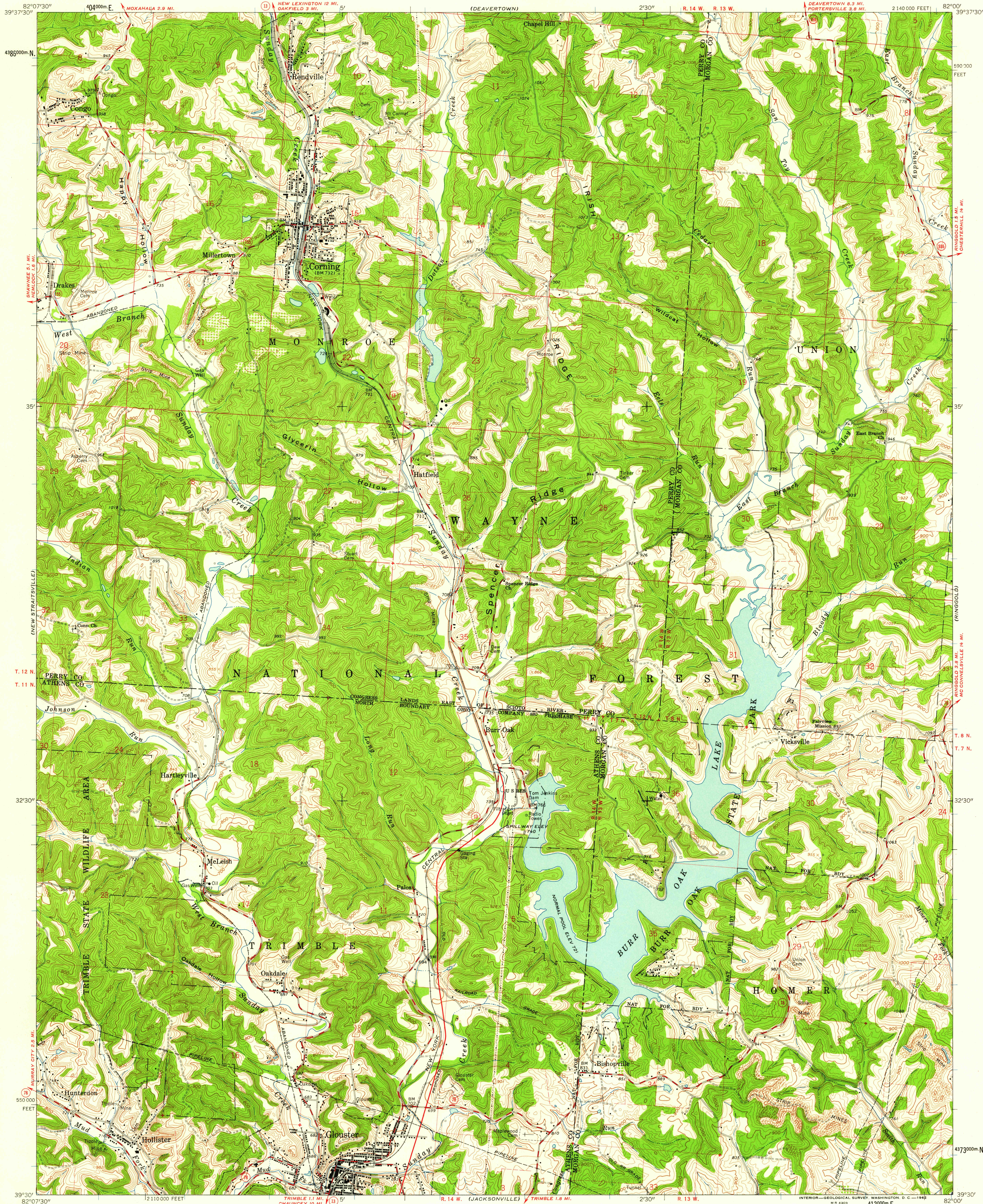
(NEW LEXINGTON)

UNITED STATES
DEPARTMENT OF THE INTERIOR
GEOLOGICAL SURVEY

STATE OF OHIO
DEPARTMENT OF HIGHWAYS
DEPARTMENT OF NATURAL RESOURCES
DIVISION OF GEOLOGICAL SURVEY

CORNING QUADRANGLE
OHIO
7.5 MINUTE SERIES (TOPOGRAPHIC)

(ROCKY LOOK)



Mapped, edited, and published by the Geological Survey

Control by USGS and USC&GS

Topography by photogrammetric methods from aerial photographs taken 1960. Field checked 1961

Polyconic projection, 1927 North American datum, 10,000-foot grid based on Ohio coordinate system, south zone

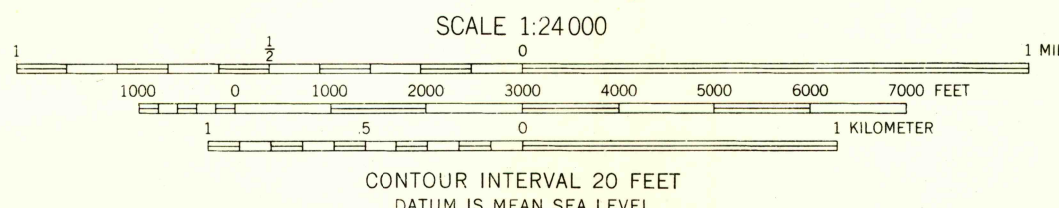
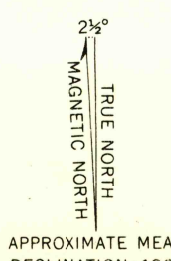
1000-meter Universal Transverse Mercator grid ticks, zone 17, shown in blue

Fine red dashed lines indicate selected fence and field lines where generally visible on aerial photographs. This information is unchecked

Unlabeled wells are oil wells

Land lines based on the Ohio River Base

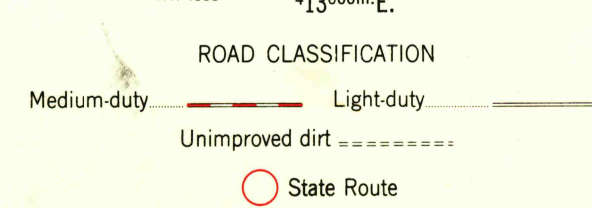
Dotted land lines established by private subdivision of the Ohio Company Purchase



CONTOUR INTERVAL 20 FEET

DATUM IS MEAN SEA LEVEL

THIS MAP COMPLIES WITH NATIONAL MAP ACCURACY STANDARDS
FOR SALE BY U. S. GEOLOGICAL SURVEY, WASHINGTON 25, D. C.
A FOLDER DESCRIBING TOPOGRAPHIC MAPS AND SYMBOLS IS AVAILABLE ON REQUEST



USGS
Historical File
Topographic Division

CORNING, OHIO
SE/4 NEW LEXINGTON 15' QUADRANGLE
N 3930-W 8200/7.5

1961

JAN 22 1963

2720