

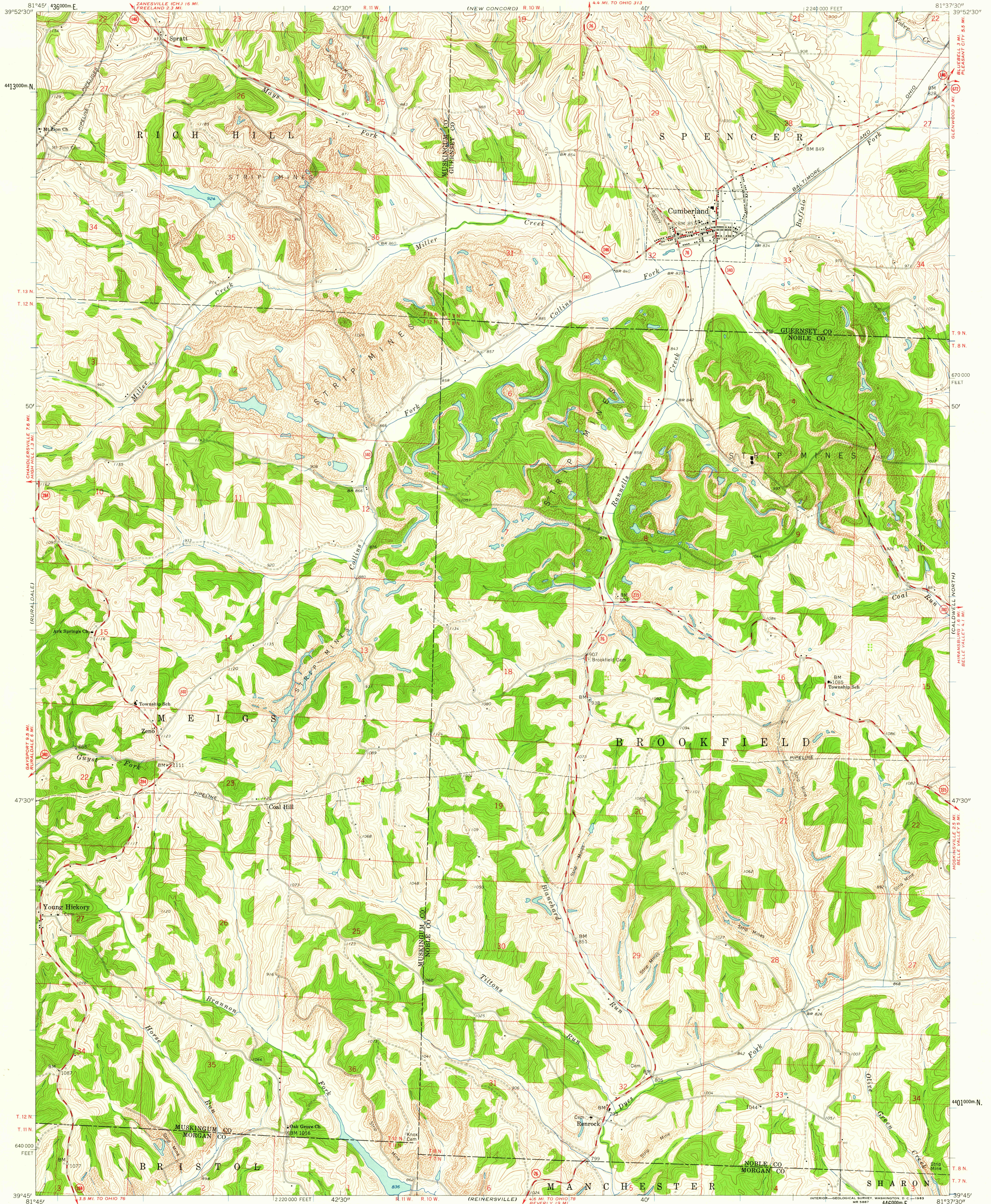
(NORWICH)

UNITED STATES
DEPARTMENT OF THE INTERIOR
GEOLOGICAL SURVEY

STATE OF OHIO
DEPARTMENT OF HIGHWAYS
DEPARTMENT OF NATURAL RESOURCES
DIVISION OF GEOLOGICAL SURVEY

CUMBERLAND QUADRANGLE
OHIO
7.5 MINUTE SERIES (TOPOGRAPHIC)
SW 1/4 CUMBERLAND 15' QUADRANGLE

(REINERSVILLE)



Mapped, edited, and published by the Geological Survey

Control by USGS and USC&GS

Topography by photogrammetric methods from aerial photographs taken 1960. Field checked 1961

Polyconic projection. 1927 North American datum

10,000-foot grid based on Ohio coordinate system, south zone

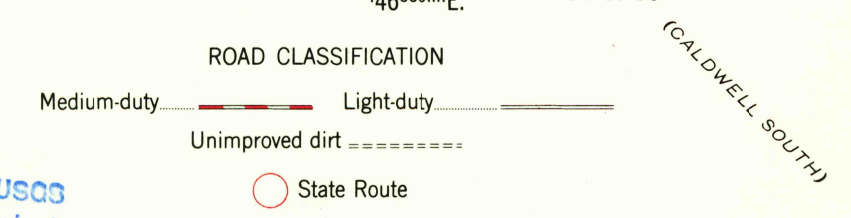
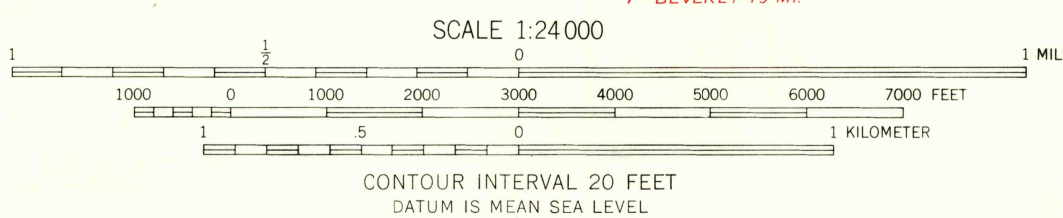
1000-meter Universal Transverse Mercator grid ticks, zone 17, shown in blue

Entire area lies within Congress Lands east of the Scioto River

Land lines based on the Ohio River Base

Fine red dashed lines indicate selected fence and field lines where generally visible on aerial photographs. This information is unchecked

3°
TRUE NORTH
MAGNETIC NORTH
APPROXIMATE MEAN DECLINATION, 1961



USGS
Historical File G.S.
Topographic Division
FILE COPY
TOPOGRAPHIC DIVISION
CUMBERLAND, OHIO
SW 1/4 CUMBERLAND 15' QUADRANGLE
N 3945-W 8137.5/7.5
1961

JUN 12 1963

2623