

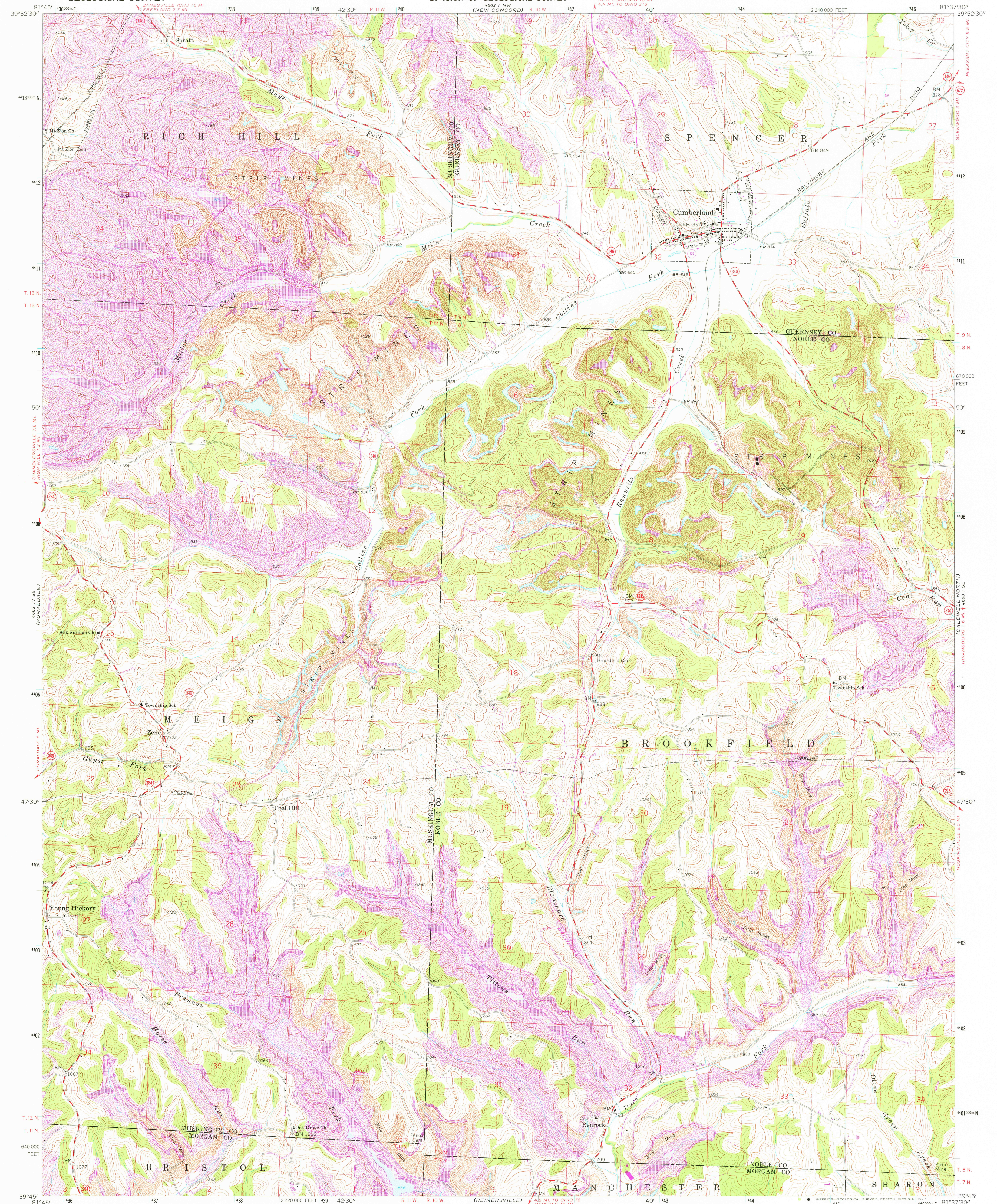
4663 IV SE  
(NOBENICH)

UNITED STATES  
DEPARTMENT OF THE INTERIOR  
GEOLOGICAL SURVEY

STATE OF OHIO  
DEPARTMENT OF TRANSPORTATION  
DEPARTMENT OF NATURAL RESOURCES  
DIVISION OF GEOLOGICAL SURVEY

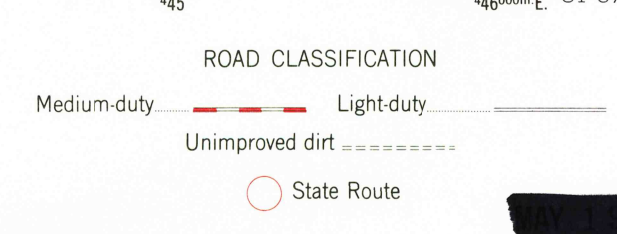
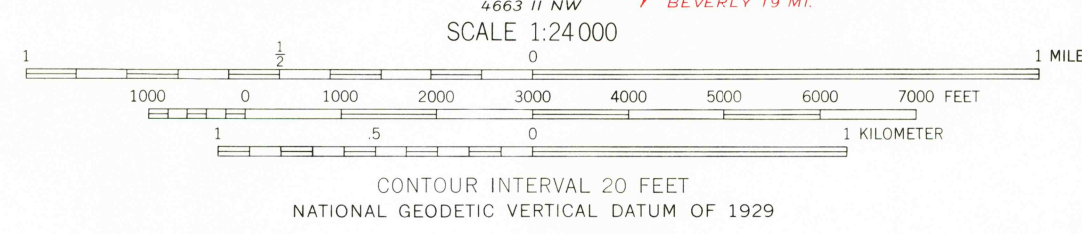
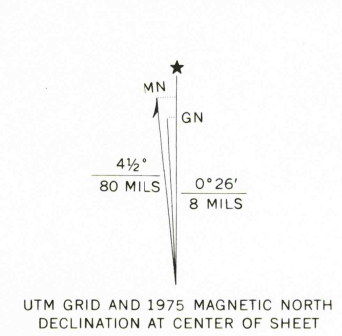
CUMBERLAND QUADRANGLE  
OHIO  
7.5 MINUTE SERIES (TOPOGRAPHIC)

4663 I NE  
(BYESVILLE)



(MC CONNELSVILLE)  
4663 IV SE

Mapped, edited, and published by the Geological Survey  
Control by USGS and USC&GS  
Topography by photogrammetric methods from aerial  
photographs taken 1960. Field checked 1961  
Polyconic projection, 1927 North American datum  
10,000-foot grid based on Ohio coordinate system, south zone  
1000-meter Universal Transverse Mercator grid ticks,  
zone 17, shown in blue  
Entire area lies within Congress Lands east of the Scioto River  
Land lines based on the Ohio River Base  
Fine red dashed lines indicate selected fence and field lines where  
generally visible on aerial photographs. This information is unchecked



CUMBERLAND, OHIO  
N3945-W8137.5/7.5  
1961  
PHOTOREVISED 1975  
AMS 4663 I SW-SERIES V852  
AUG 15 1977

THIS MAP COMPLIES WITH NATIONAL MAP ACCURACY STANDARDS  
FOR SALE BY U.S. GEOLOGICAL SURVEY, RESTON, VIRGINIA 22092  
A FOLDER DESCRIBING TOPOGRAPHIC MAPS AND SYMBOLS IS AVAILABLE ON REQUEST

Revisions shown in purple compiled in cooperation with  
State of Ohio agencies from aerial photographs taken  
1975. This information not field checked