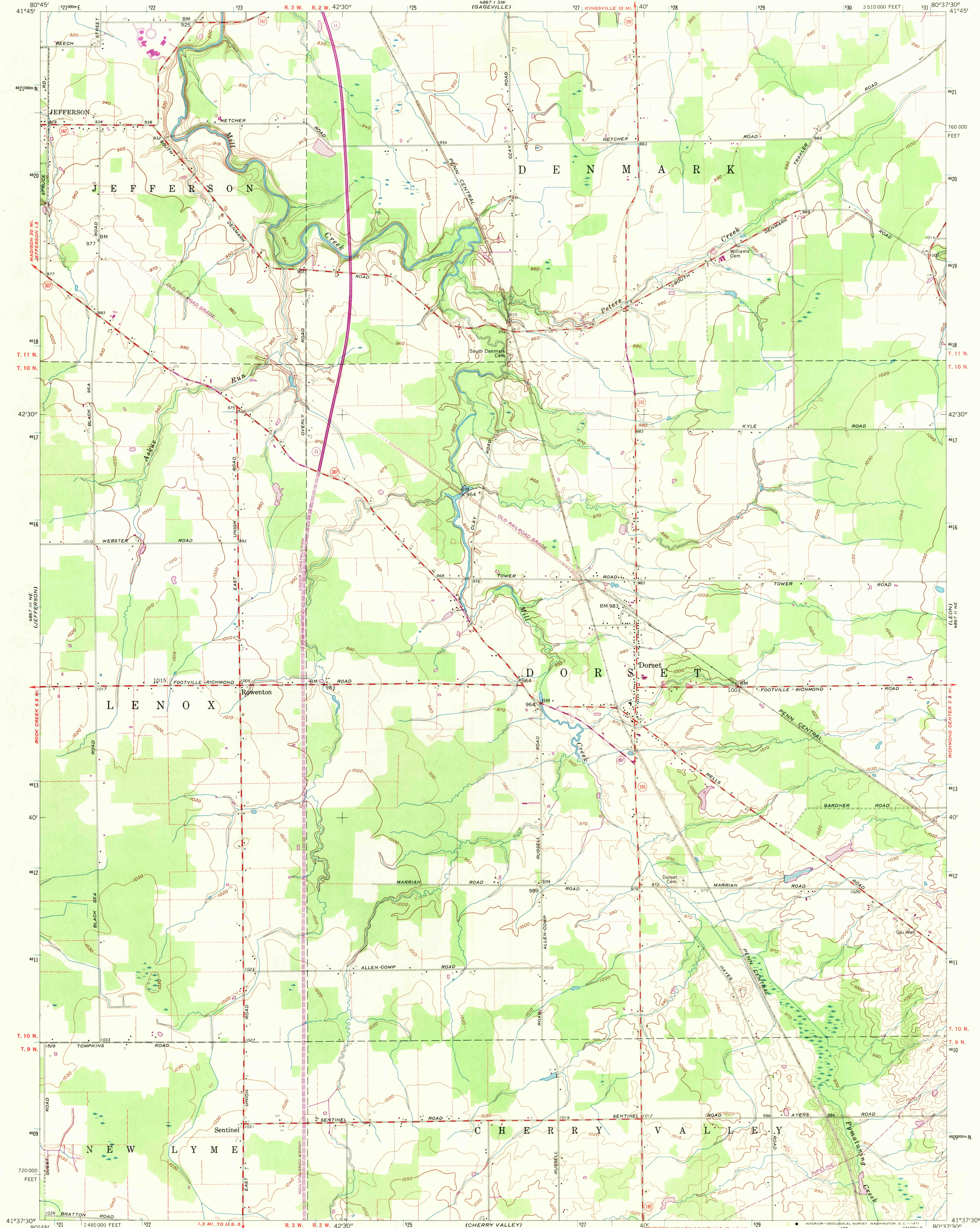


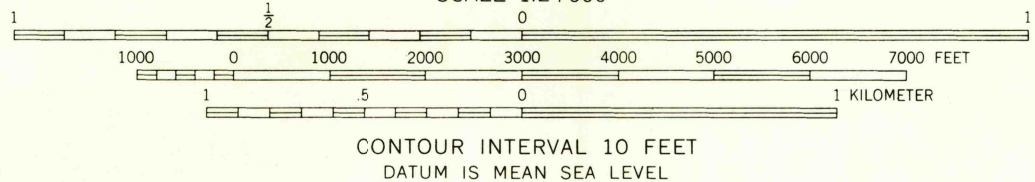
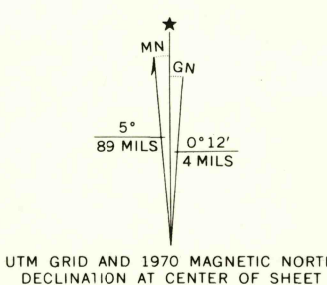
UNITED STATES  
DEPARTMENT OF THE INTERIOR  
GEOLOGICAL SURVEY

STATE OF OHIO  
DEPARTMENT OF HIGHWAYS  
DEPARTMENT OF NATURAL RESOURCES  
DIVISION OF GEOLOGICAL SURVEY

DORSET QUADRANGLE  
OHIO-ASHTABULA CO.  
7.5 MINUTE SERIES (TOPOGRAPHIC)  
NW 1/4 ANDOVER 15' QUADRANGLE



Mapped, edited, and published by the Geological Survey  
Control by USGS and USC&GS  
Culture and drainage in part compiled from aerial photographs taken 1952. Topography by planetable surveys 1959  
Polyconic projection. 1927 North American datum  
10,000-foot grid based on Ohio coordinate system, north zone  
1000-meter Universal Transverse Mercator grid ticks, zone 17, shown in blue  
Fine red dashed lines indicate selected fence and field lines visible on aerial photographs. This information is unchecked  
Entire map lies within the Connecticut Western Reserve



USGS  
Historical File  
Topographic Division



ROAD CLASSIFICATION  
Medium-duty ——— Light-duty ———  
Unimproved dirt ———  
State Route

DORSET, OHIO  
NW 1/4 ANDOVER 15' QUADRANGLE  
N4137.5-W8037.5/7.5

THIS MAP COMPLIES WITH NATIONAL MAP ACCURACY STANDARDS  
FOR SALE BY U.S. GEOLOGICAL SURVEY, WASHINGTON, D. C. 20242  
A FOLDER DESCRIBING TOPOGRAPHIC MAPS AND SYMBOLS IS AVAILABLE ON REQUEST

Revisions shown in purple compiled in cooperation with  
State of Ohio agencies from aerial photographs taken 1952  
This information not field checked

U.S.G.S.  
1959  
PHOTOREVISED 1970  
AMS 4867 II NW-SERIES V852

FILE COPY

FEB 10 1971