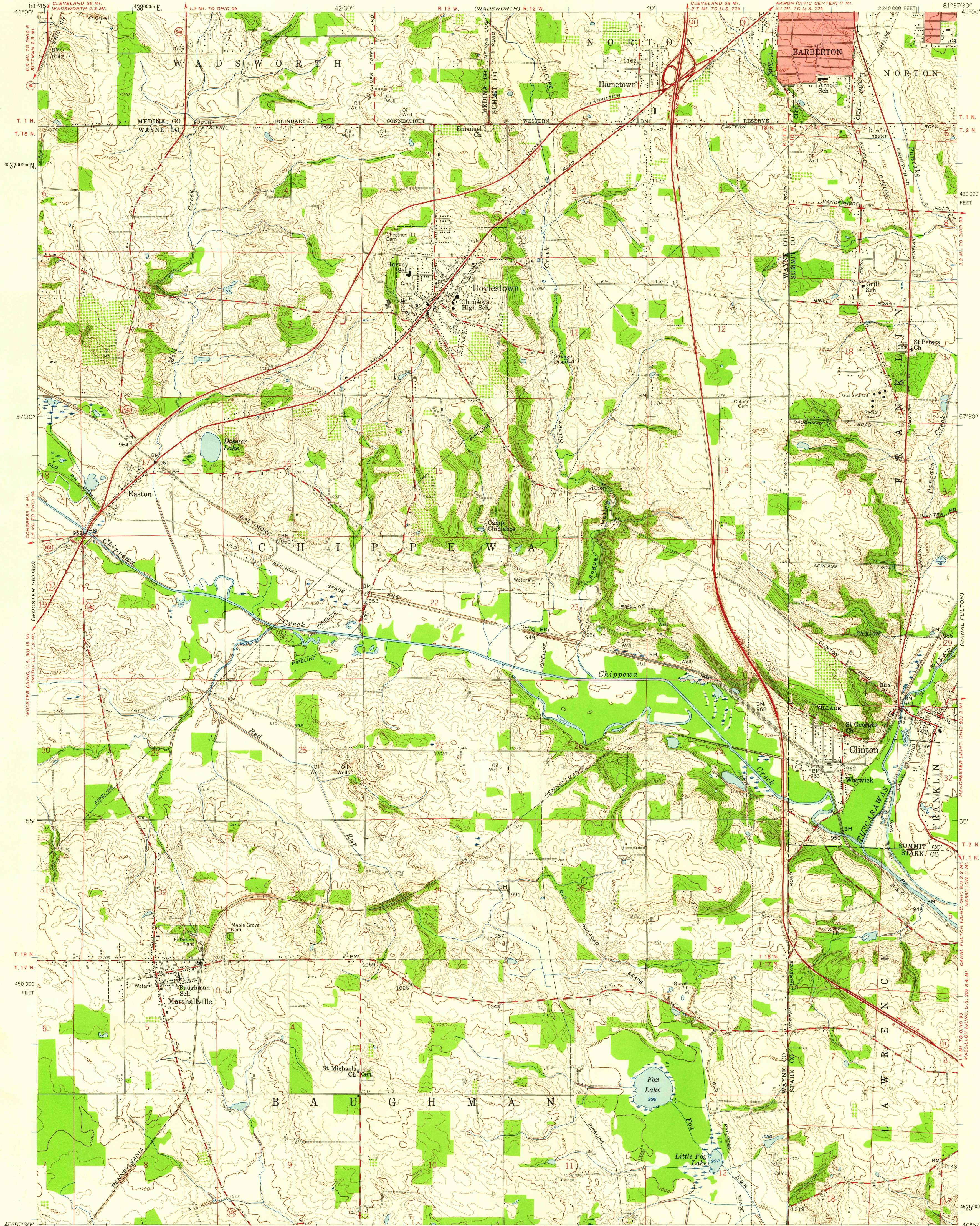


UNITED STATES
DEPARTMENT OF THE INTERIOR
GEOLOGICAL SURVEY

DOYLESTOWN QUADRANGLE
OHIO
7.5 MINUTE SERIES (TOPOGRAPHIC)
NW 1/4 MASSILLON 15' QUADRANGLE



Mapped, edited, and published by the Geological Survey
in cooperation with Summit County Commissioners

Control by USGS and USC&GS

Topography from aerial photographs by photogrammetric methods

Aerial photographs taken 1957. Field check 1958

Polycyclic projection. 1927 North American datum

10,000-foot grid based on Ohio coordinate system, north zone

1000-meter Universal Transverse Mercator grid ticks,

zone 17, shown in blue

Red tint indicates areas in which only landmark buildings are shown

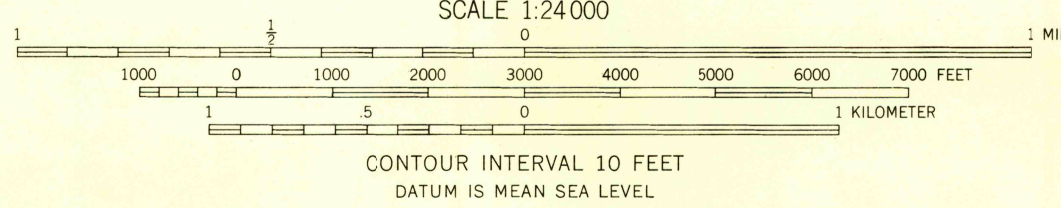
Unlabelled wells are gas wells

Unchecked elevations are shown in brown

Area within R. 10 W.-Ts. 1 and 2 N. based on the Muskingum River Base

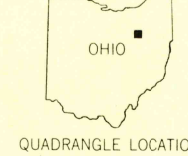
Area within R. 11 W.-Ts. 17 and 18 N. based on the Ohio River Base

APPROXIMATE MEAN
DECLINATION, 1958



THIS MAP COMPLIES WITH NATIONAL MAP ACCURACY STANDARDS
FOR SALE BY U. S. GEOLOGICAL SURVEY, WASHINGTON 25, D. C.
A FOLDER DESCRIBING TOPOGRAPHIC MAPS AND SYMBOLS IS AVAILABLE ON REQUEST

USGS
Historical File
Topographic Division



ROAD CLASSIFICATION
Heavy-duty ——— Light-duty ———
Medium-duty ——— Unimproved dirt ———
U.S. Route ——— State Route ———

U.S.G.S.
FILE COPY
TOPOGRAPHIC DIVISION

DOYLESTOWN, OHIO
NW 1/4 MASSILLON 15' QUADRANGLE
N 4052.5 - W 8137.5/7.5
1958

SEP - 3 1958

3455