

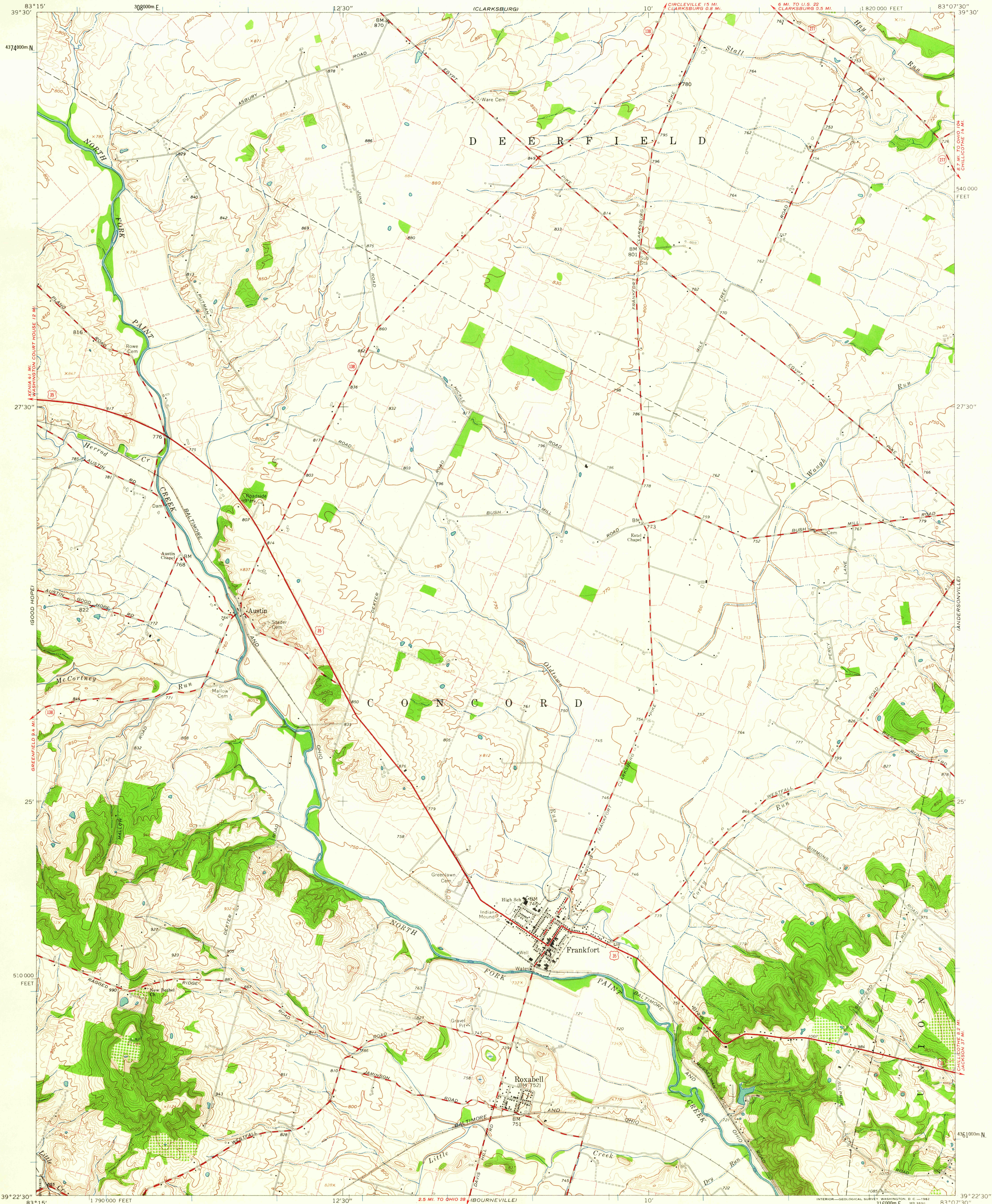
NEW HOLLAND

UNITED STATES  
DEPARTMENT OF THE INTERIOR  
GEOLOGICAL SURVEY

STATE OF OHIO  
DEPARTMENT OF HIGHWAYS  
DEPARTMENT OF NATURAL RESOURCES  
DIVISION OF GEOLOGICAL SURVEY

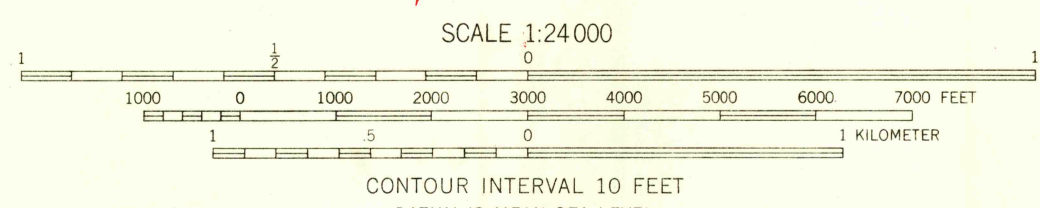
FRANKFORT QUADRANGLE  
OHIO-ROSS CO.  
7.5 MINUTE SERIES (TOPOGRAPHIC)  
NW 1/4 ROXBELL 15' QUADRANGLE

WILLIAMSPORT



Mapped, edited, and published by the Geological Survey  
Control by USGS and USC&GS  
Topography by photogrammetric methods from aerial  
photographs taken 1959-1960. Field checked 1961  
Polyconic projection. 1927 North American datum  
10,000-foot grid based on Ohio coordinate system, south zone  
1000-meter Universal Transverse Mercator grid ticks,  
zone 17, shown in blue.  
Fine red dashed lines indicate selected fence and field lines where  
generally visible on aerial photographs. This information is unchecked  
Entire area lies within the Virginia Military District

APPROXIMATE MEAN  
DECLINATION, 1961



CONTOUR INTERVAL 10 FEET  
DATUM IS MEAN SEA LEVEL

USGS  
Historical File  
Topographic Division



ROAD CLASSIFICATION	
Heavy-duty	Light-duty
Medium-duty	Unimproved dirt
U.S. Route	State Route

U.S.G.S.  
FILE COPY  
TOPOGRAPHIC DIVISION

FRANKFORT, OHIO  
NW 1/4 ROXBELL 15' QUADRANGLE  
N3922.5-W8307.5/7.5

1961

DEC 12 1962

2255