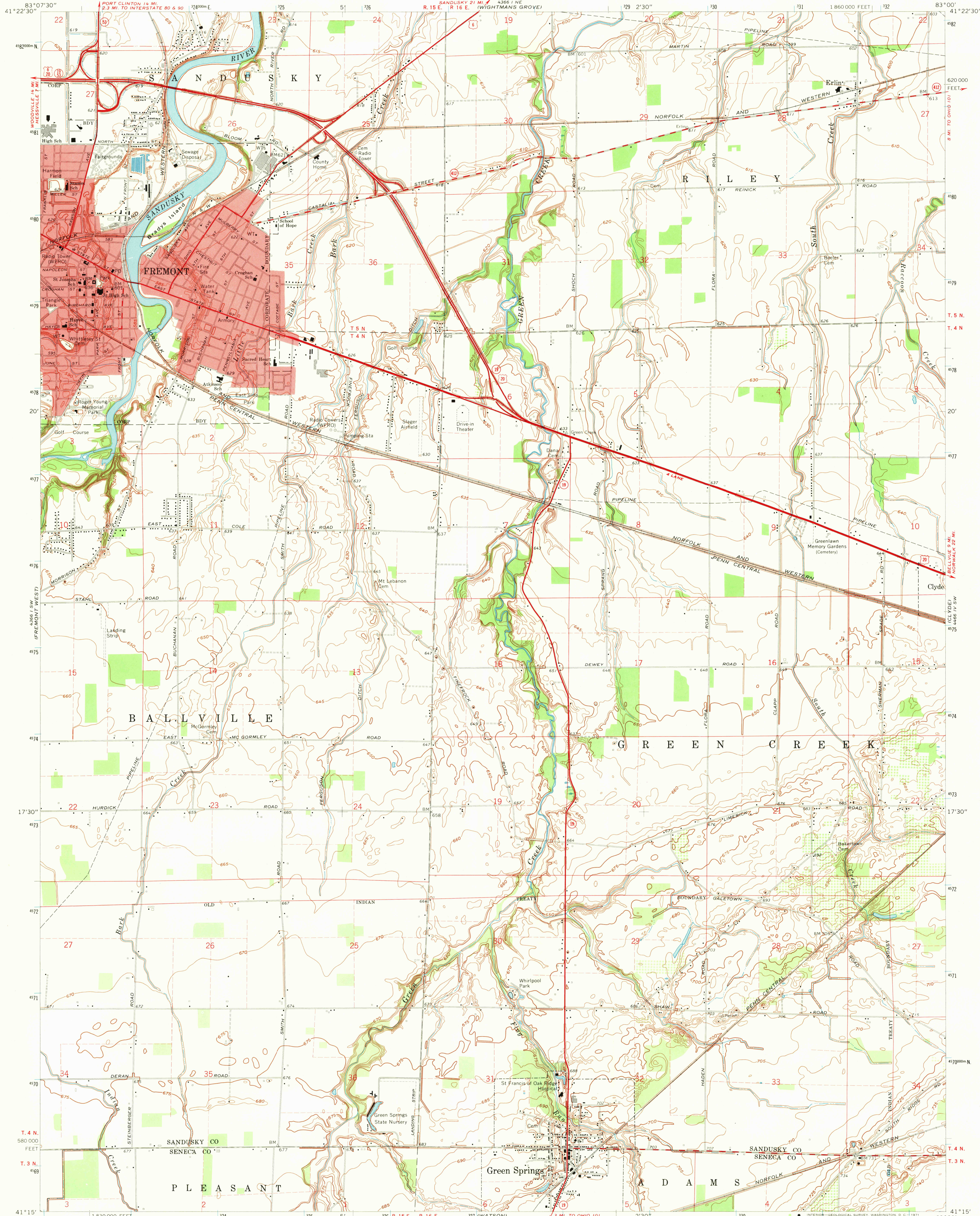
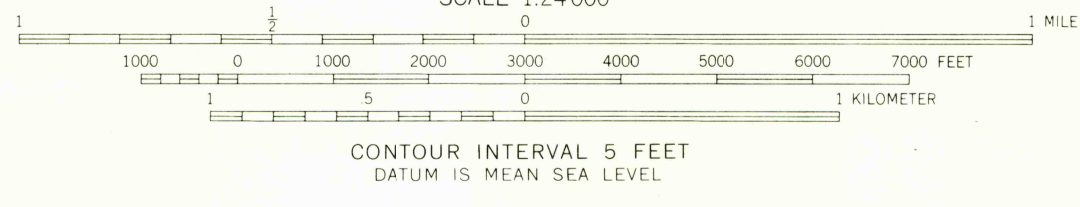


UNITED STATES
DEPARTMENT OF THE INTERIOR
GEOLOGICAL SURVEY

FREMONT EAST QUADRANGLE
OHIO
7.5 MINUTE SERIES (TOPOGRAPHIC)
SE/4 FREMONT 15 QUADRANGLE



Mapped, edited, and published by the Geological Survey
Revised in cooperation with State of Ohio agencies
Control by USGS and USC&GS
Planimetry by photogrammetric methods from aerial photographs
taken 1951. Topography by planetable surveys 1958. Revised from
aerial photographs taken 1969. Field checked 1969
Polyconic projection. 1927 North American datum
10,000-foot grid based on Ohio coordinate system, north zone
1000-meter Universal Transverse Mercator grid ticks, zone 17,
shown in blue
Fine red dashed lines indicate selected fence and field lines where
generally visible on aerial photographs. This information is unchecked
Red tint indicates area in which only landmark buildings are shown
Entire area lies within Congress Lands
Land lines based on the First Principal Meridian



ROAD CLASSIFICATION
 Primary highway, all weather, hard surface
 Secondary highway, all weather, hard surface
 Light-duty road, all weather, improved surface
 Unimproved road, fair or dry weather
 U. S. Route
 State Route



FREMONT EAST, OHIO
SE/4 FREMONT 15 QUADRANGLE
N4115-W8300/7.5

1969
AMS 4366 I SE-SERIES V852

THIS MAP COMPLIES WITH NATIONAL MAP ACCURACY STANDARDS
FOR SALE BY U. S. GEOLOGICAL SURVEY, WASHINGTON, D. C. 20242
A FOLDER DESCRIBING TOPOGRAPHIC MAPS AND SYMBOLS IS AVAILABLE ON REQUEST

NOV 9 1971

U.S. GEOLOGICAL SURVEY
HISTORICAL FILE
TOPOGRAPHIC DIVISION