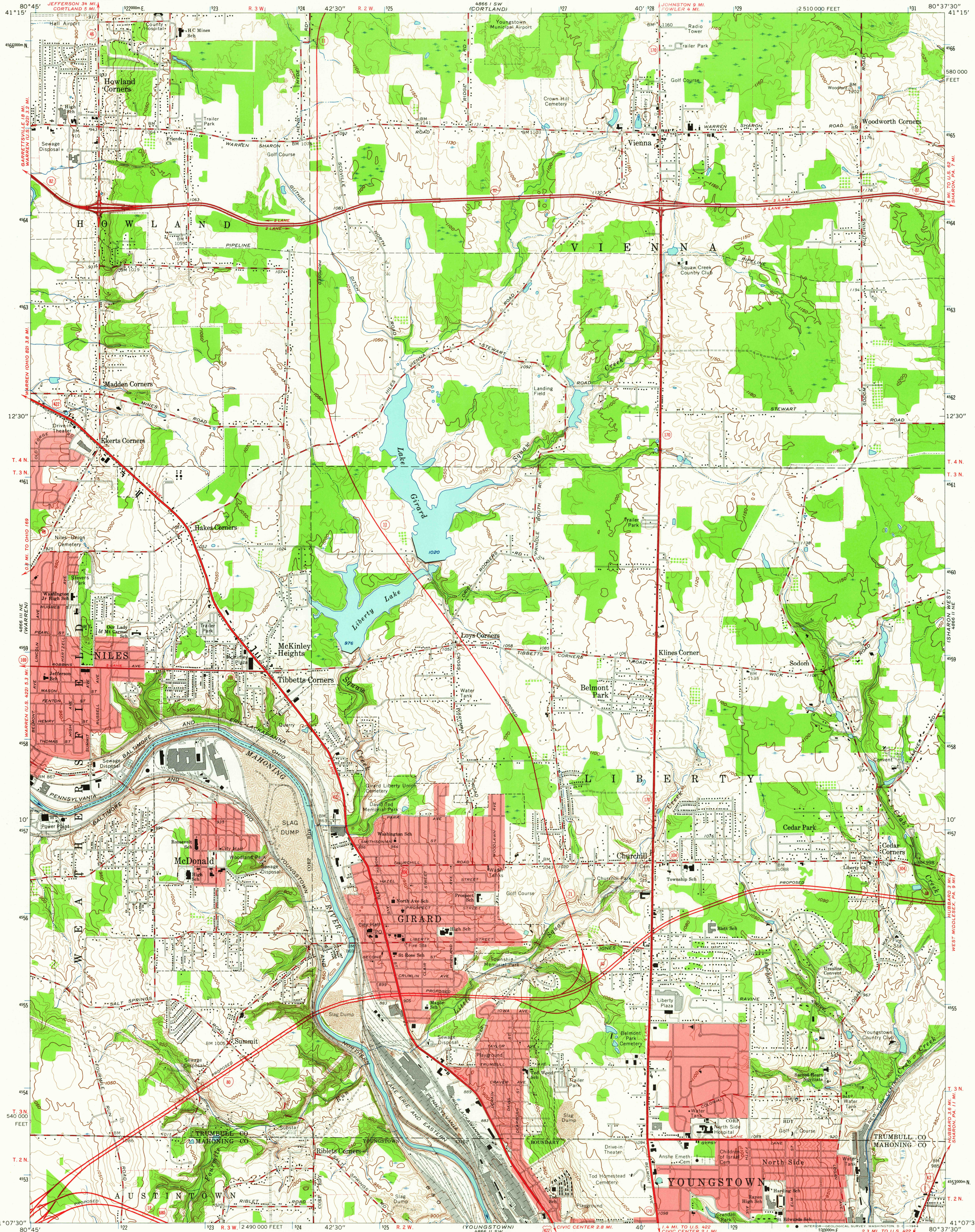


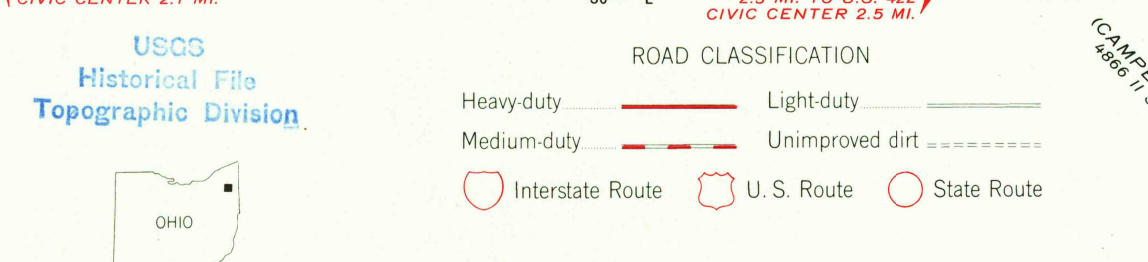
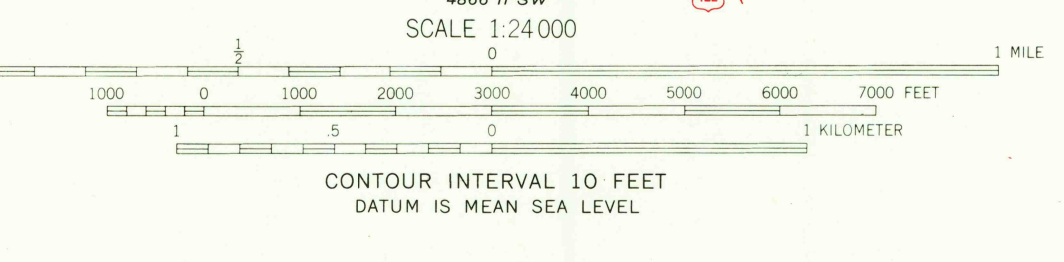
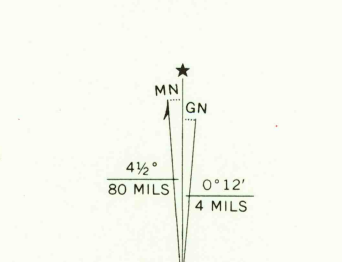
UNITED STATES
DEPARTMENT OF THE INTERIOR
GEOLOGICAL SURVEY

GIRARD QUADRANGLE
OHIO
7.5 MINUTE SERIES (TOPOGRAPHIC)
NW/4 YOUNGSTOWN 15' QUADRANGLE



Mapped, edited, and published by the Geological Survey in cooperation with the County of Mahoning. Revised in cooperation with State of Ohio agencies. Control by USGS, USC&GS, USCE, and County of Mahoning. Topography by photogrammetric methods from aerial photographs taken 1951. Revised from aerial photographs taken 1962. Field checked 1962.

Polyconic projection. 1927 North American datum. 10,000-foot grid based on Ohio coordinate system, north zone. 1000-meter Universal Transverse Mercator grid ticks, zone 17, shown in blue. Fine red dashed lines indicate selected fence and field lines where generally visible on aerial photographs. This information is unchecked. Red tint indicates areas in which only landmark buildings are shown. Entire area lies within the Connecticut Western Reserve. Land lines established by private subdivision of the Connecticut Western Reserve.



USGS Historical File Topographic Division
OHIO
QUADRANGLE LOCATION
GIRARD, OHIO
NW/4 YOUNGSTOWN 15' QUADRANGLE
N4107.5-W8037.5/7.5
1962
AMS 4866 II NW-SERIES V852

THIS MAP COMPLIES WITH NATIONAL MAP ACCURACY STANDARDS FOR SALE BY U.S. GEOLOGICAL SURVEY, WASHINGTON 25, D. C. A FOLDER DESCRIBING TOPOGRAPHIC MAPS AND SYMBOLS IS AVAILABLE ON REQUEST

2925
JUN 25 1964