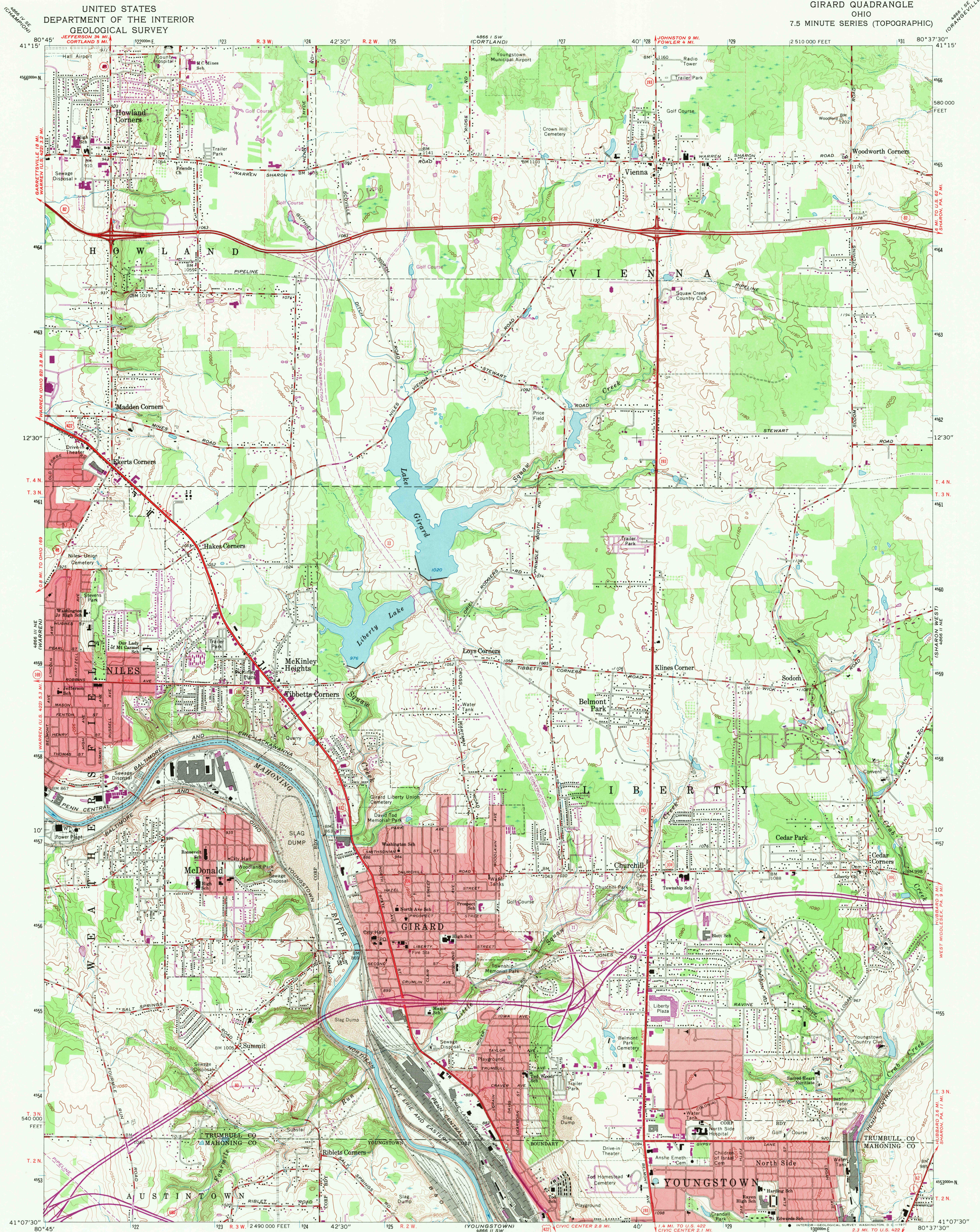
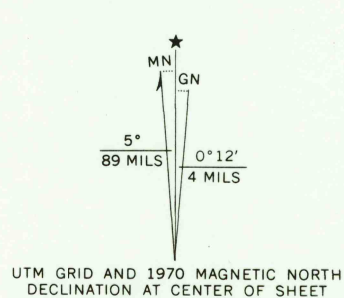


UNITED STATES
DEPARTMENT OF THE INTERIOR
GEOLOGICAL SURVEY

GIRARD QUADRANGLE
OHIO
7.5 MINUTE SERIES (TOPOGRAPHIC)



Mapped, edited, and published by the Geological Survey in cooperation with the County of Mahoning. Revised in cooperation with State of Ohio agencies. Control by USGS, USCGS, USCE, and County of Mahoning. Topography by photogrammetric methods from aerial photographs taken 1951. Revised from aerial photographs taken 1962. Field checked 1962. Polyconic projection. 1927 North American datum. 10,000-foot grid based on Ohio coordinate system; north zone. 1000-meter Universal Transverse Mercator grid ticks, zone 17, shown in blue. Fine red dashed lines indicate selected fence and field lines where generally visible on aerial photographs. This information is uncorrected. Red tint indicates areas in which only landmark buildings are shown. Entire area lies within the Connecticut Western Reserve. Land lines established by private subdivision of the Connecticut Western Reserve.



THIS MAP COMPLIES WITH NATIONAL MAP ACCURACY STANDARDS
FOR SALE BY U.S. GEOLOGICAL SURVEY, WASHINGTON, D.C. 20242
A FOLDER DESCRIBING TOPOGRAPHIC MAPS AND SYMBOLS IS AVAILABLE ON REQUEST

USGS
Historical File
Topographic Division



ROAD CLASSIFICATION
Heavy-duty ——— Light-duty ———
Medium-duty ——— Unimproved dirt ———
Interstate Route ——— U.S. Route ——— State Route ———

U.S.G.S. GIRARD, OHIO
1975-W8037.5/7.5
1962
PHOTOREVISED 1970
4866 II NW-SERIES W852

Revisions shown in purple compiled in cooperation with State of Ohio agencies from aerial photographs taken 1970. This information not field checked.

3295
MAR 3 1971