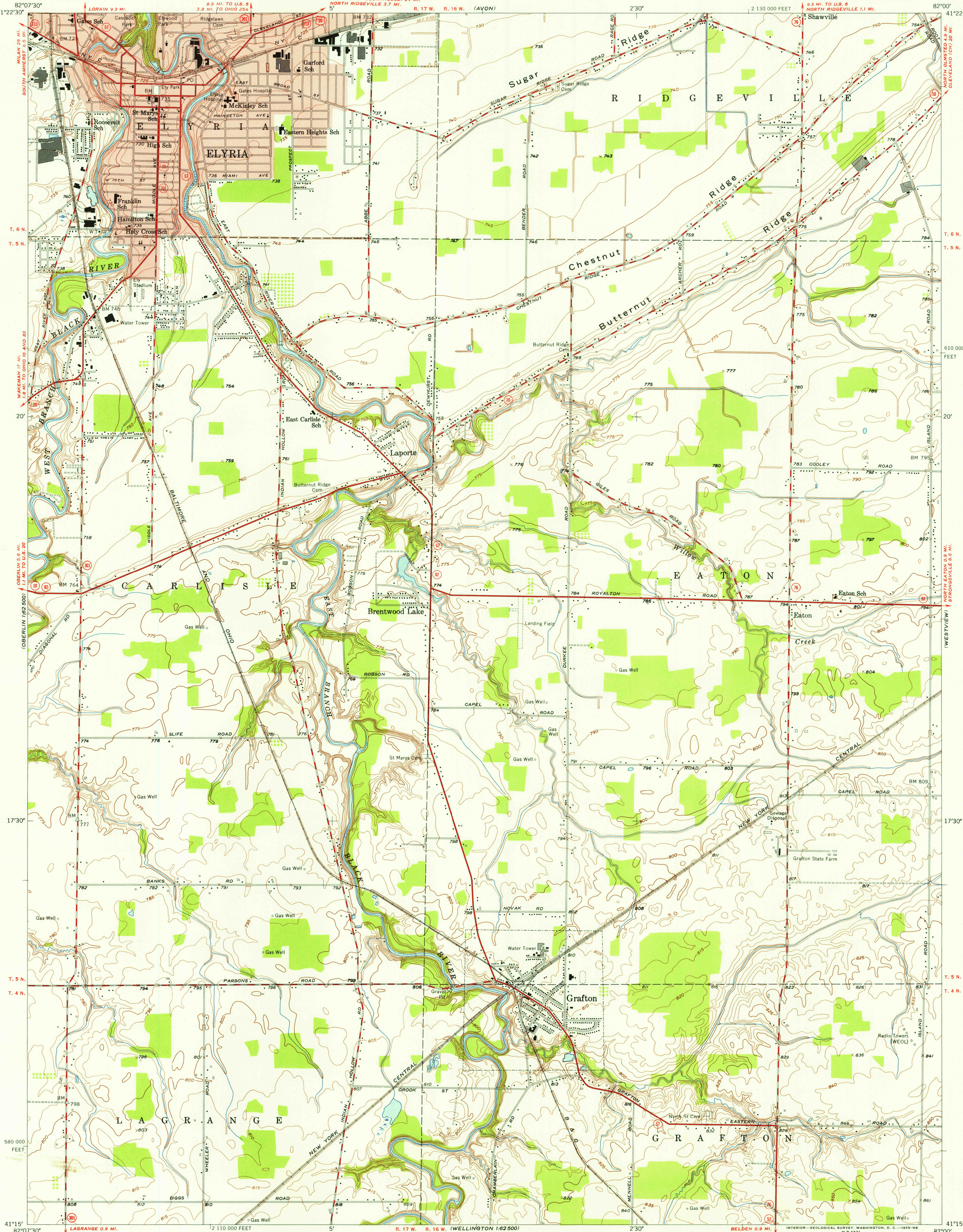


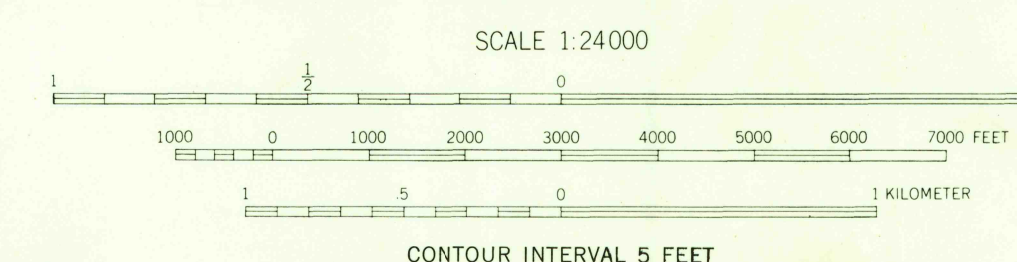
UNITED STATES
DEPARTMENT OF THE INTERIOR
GEOLOGICAL SURVEY

GRAFTON QUADRANGLE
OHIO-LORAIN CO.
7.5 MINUTE SERIES (TOPOGRAPHIC)
SE/4 OBERLIN 15' QUADRANGLE

U.S.G.S.
FILE COPY
TOPOGRAPHIC DIVISION



Maped, edited, and published by the Geological Survey
Control by USGS and USC&GS
Culture and drainage in part compiled from aerial photographs
taken 1952. Topography by plane-table surveys 1953
Polyconic projection, 1927 North American datum
10,000-foot grid based on Ohio coordinate system,
north zone
Red tint indicates areas in which only
landmark buildings are shown
Entire area lies within the Connecticut Western Reserve
Land lines were established by the Connecticut Land Company



ROAD CLASSIFICATION
Heavy-duty 4 LANE 15 LANE Light-duty
Medium-duty 4 LANE 15 LANE Unimproved dirt
U.S. Route State Route

GRAFTON, OHIO
SE/4 OBERLIN 15' QUADRANGLE
N4115-W8200/7.5

U.S.G.S.
FILE COPY
TOPOGRAPHIC DIVISION
HISTORICAL

MAY 2 1955
4275