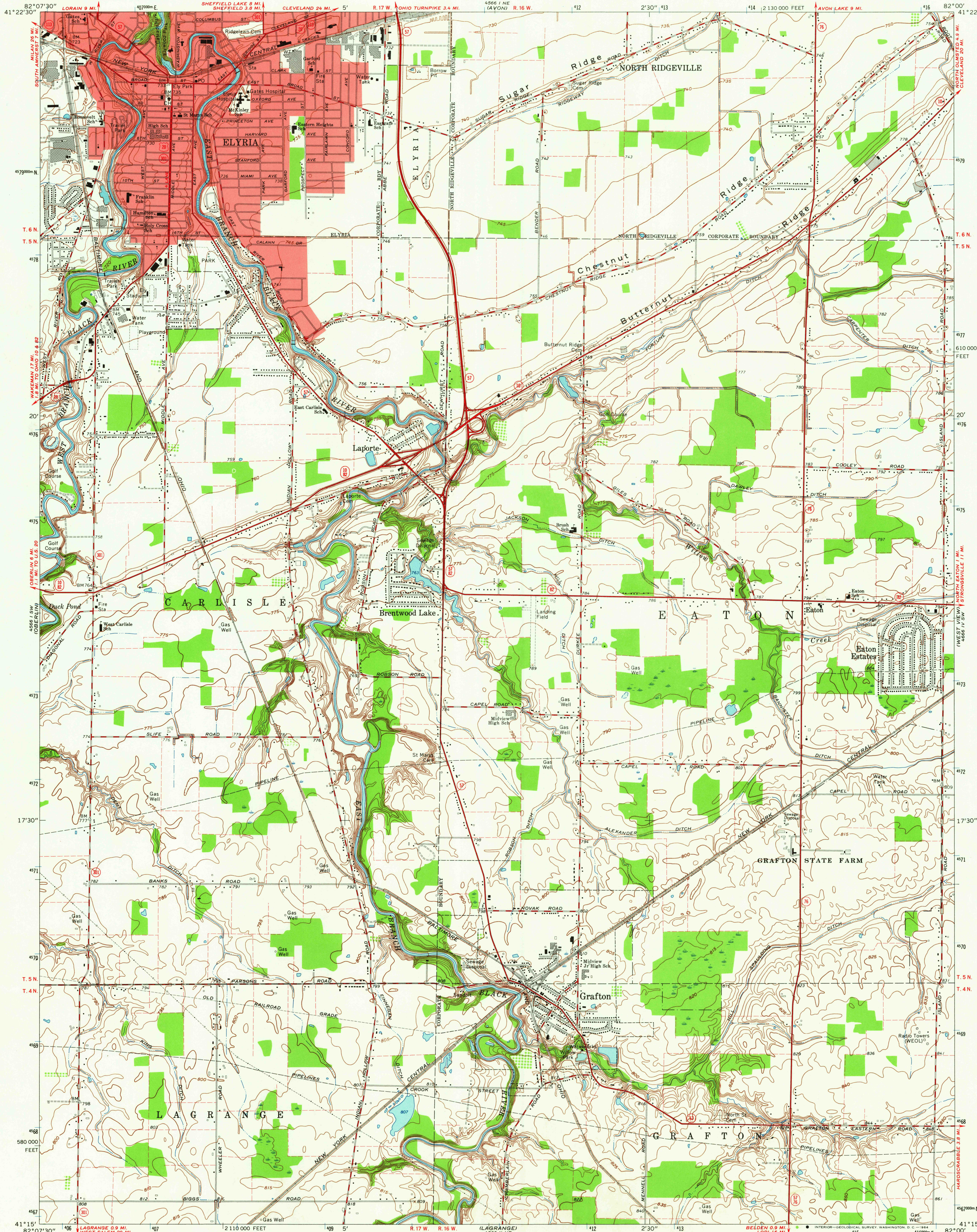
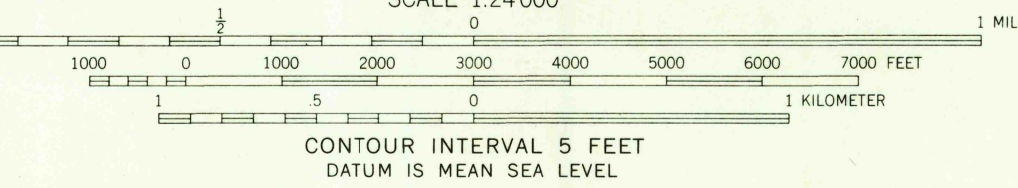
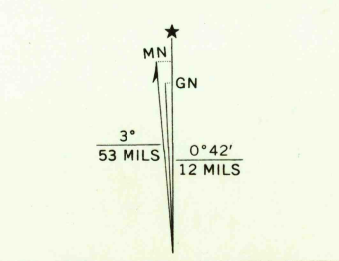


UNITED STATES
DEPARTMENT OF THE INTERIOR
GEOLOGICAL SURVEY

GRAFTON QUADRANGLE
OHIO-LORAIN CO.
7.5 MINUTE SERIES (TOPOGRAPHIC)
SE/4 OBERLIN 15' QUADRANGLE



Mapped, edited, and published by the Geological Survey
Revised in cooperation with State of Ohio agencies
Control by USGS and USCGS
Planimetry by photogrammetric methods from aerial photographs
taken 1952. Topography by planimetric surveys 1953. Revised
from aerial photographs taken 1962. Field checked 1963
Polyconic projection. 1927 North American datum
10,000-foot grid based on Ohio coordinate system, north zone
1000-meter Universal Transverse Mercator grid ticks,
zone 17, shown in blue
Fine red dashed lines indicate selected fence and field lines where
generally visible on aerial photographs. This information is unchecked
Red tint indicates areas in which only landmark buildings are shown
Entire area lies within the Connecticut Western Reserve
Dotted land lines established by private subdivision of the
Connecticut Western Reserve



THIS MAP COMPLIES WITH NATIONAL MAP ACCURACY STANDARDS
FOR SALE BY U.S. GEOLOGICAL SURVEY, WASHINGTON 25, D. C.
A FOLDER DESCRIBING TOPOGRAPHIC MAPS AND SYMBOLS IS AVAILABLE ON REQUEST

ROAD CLASSIFICATION	
Heavy-duty	Light-duty
Medium-duty	Unimproved dirt
U.S. Route	State Route



GRAFTON, OHIO
SE/4 OBERLIN 15' QUADRANGLE
N4115-W8200/7.5

1963
AMS 4566 I SE-SERIES V852

AUG 27 1964
HISTORICAL
USGS
Historical File
Topographic Division
HISTORICAL
22 F5