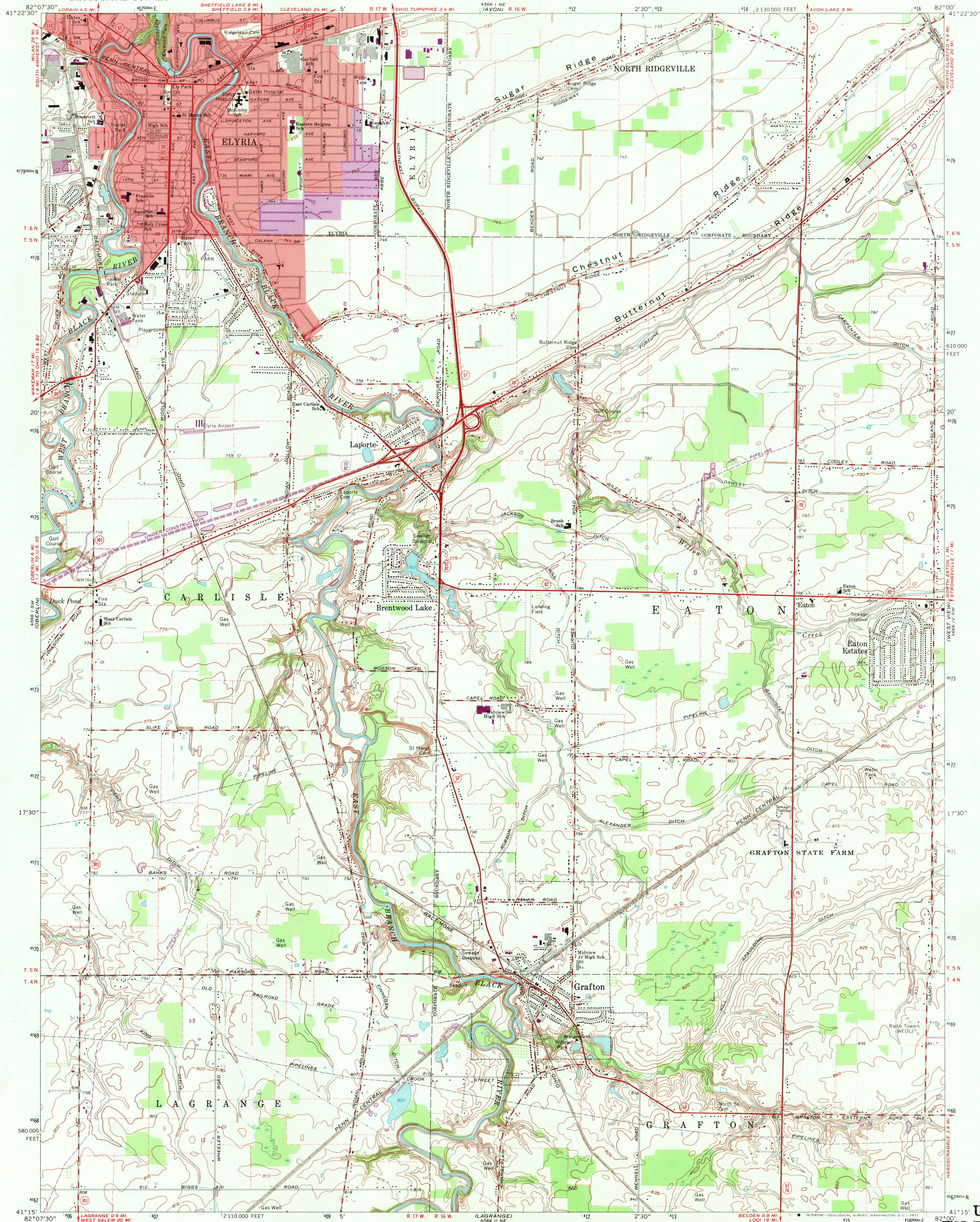
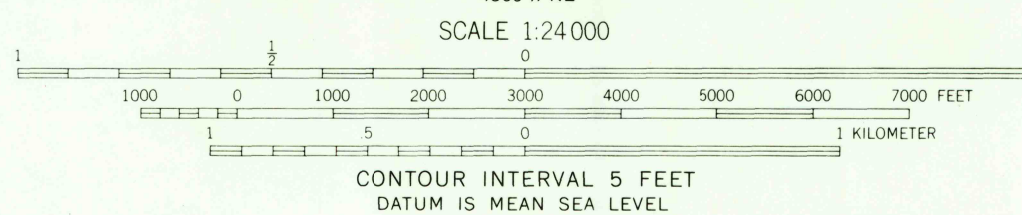


UNITED STATES
DEPARTMENT OF THE INTERIOR
GEOLOGICAL SURVEY

GRAFTON QUADRANGLE
OHIO—LORAIN CO.
7.5 MINUTE SERIES (TOPOGRAPHIC)



Mapped, edited, and published by the Geological Survey
Revised in cooperation with State of Ohio agencies
Control by USGS and USC&GS
Planimetry by photogrammetric methods from aerial photographs
taken 1952. Topography by planimetric surveys 1953. Revised
from aerial photographs taken 1962. Field checked 1963
Polyconic projection. 1927 North American datum
10,000-foot grid based on Ohio coordinate system; north zone
1000-meter Universal Transverse Mercator grid ticks,
zone 17, shown in blue
Fine red dashed lines indicate selected fence and field lines where
generally visible on aerial photographs. This information is uncheck
Red tint indicates areas in which only landmark buildings are shown
Entire area lies within the Connecticut Western Reserve
Dotted land lines established by private subdivision of the
Connecticut Western Reserve



USGS
Historical File
Topographic Division

ROAD CLASSIFICATION
Heavy-duty ——— Light-duty ———
Medium-duty ——— Unimproved dirt ———
U.S. Route ——— State Route ———

GRAFTON, OHIO
N4115—W8200/7.5
1963
PHOTOREVISED 1970
AMS 4566 I SE—SERIES W852

U.S.G.S.
FILE COPY
TOPOGRAPHIC DIVISION
2605
JUN 14 1971
HISTORICAL

RETURN TO:
USGS AND HISTORICAL MAP ARCHIVES