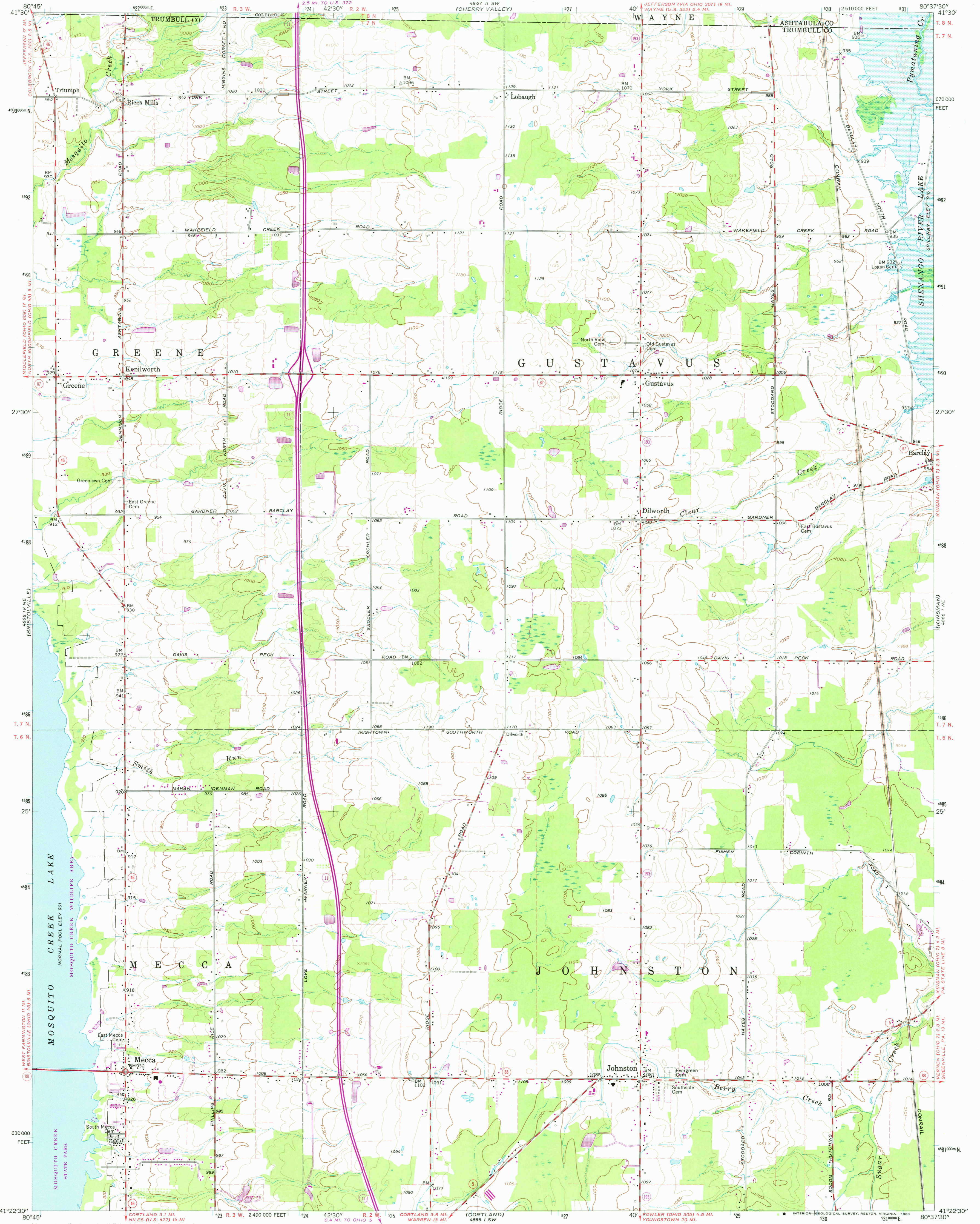
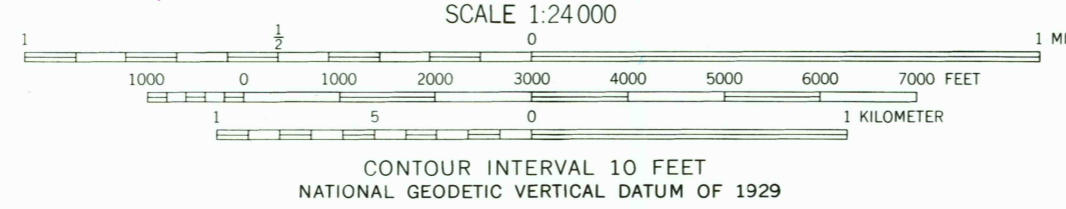
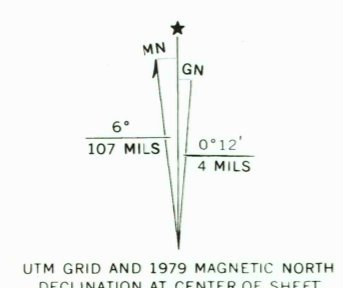


1897 U.S.
TANDYER



Mapped, edited, and published by the Geological Survey
Control by USGS, USC&GS, and USCE
Topography by photogrammetric methods from aerial
photographs taken 1961. Field checked 1961
Polyconic projection. 1927 North American datum
10,000-foot grid based on Ohio coordinate system, north zone
1000-meter Universal Transverse Mercator grid ticks,
zone 17, shown in blue
Fine red dashed lines indicate selected fence and field lines where
generally visible on aerial photographs. This information is unchecked
Areas covered by dashed light-blue pattern are
subject to controlled inundation
Entire area lies within the Connecticut Western Reserve. Land lines
established by private subdivision of the Connecticut Western Reserve
There may be private inholdings within the boundaries of
the National or State reservations shown on this map



ROAD CLASSIFICATION

| | |
|-------------|-----------------|
| Heavy-duty | Light-duty |
| Medium-duty | Unimproved dirt |
| State Route | |



USGS
Historical File
Topographic Division
GUSTAVUS, OHIO
N4122.5-W8037.5/7.5
PHOTOREVISED 1979
1961
AMS 4866 1 NW-SERIES 7852

APR 18 1980

THIS MAP COMPLIES WITH NATIONAL MAP ACCURACY STANDARDS
FOR SALE BY U. S. GEOLOGICAL SURVEY, RESTON, VIRGINIA 22092
A FOLDER DESCRIBING TOPOGRAPHIC MAPS AND SYMBOLS IS AVAILABLE ON REQUEST

Revisions shown in purple compiled in cooperation with State
of Ohio agencies from aerial photographs taken 1977. This
information not field checked. Map edited 1979.
Boundary lines shown in purple compiled from latest
information available from the controlling authority

RETURN TO:
USGS NHD HISTORICAL MAP ARCHIVES

1500