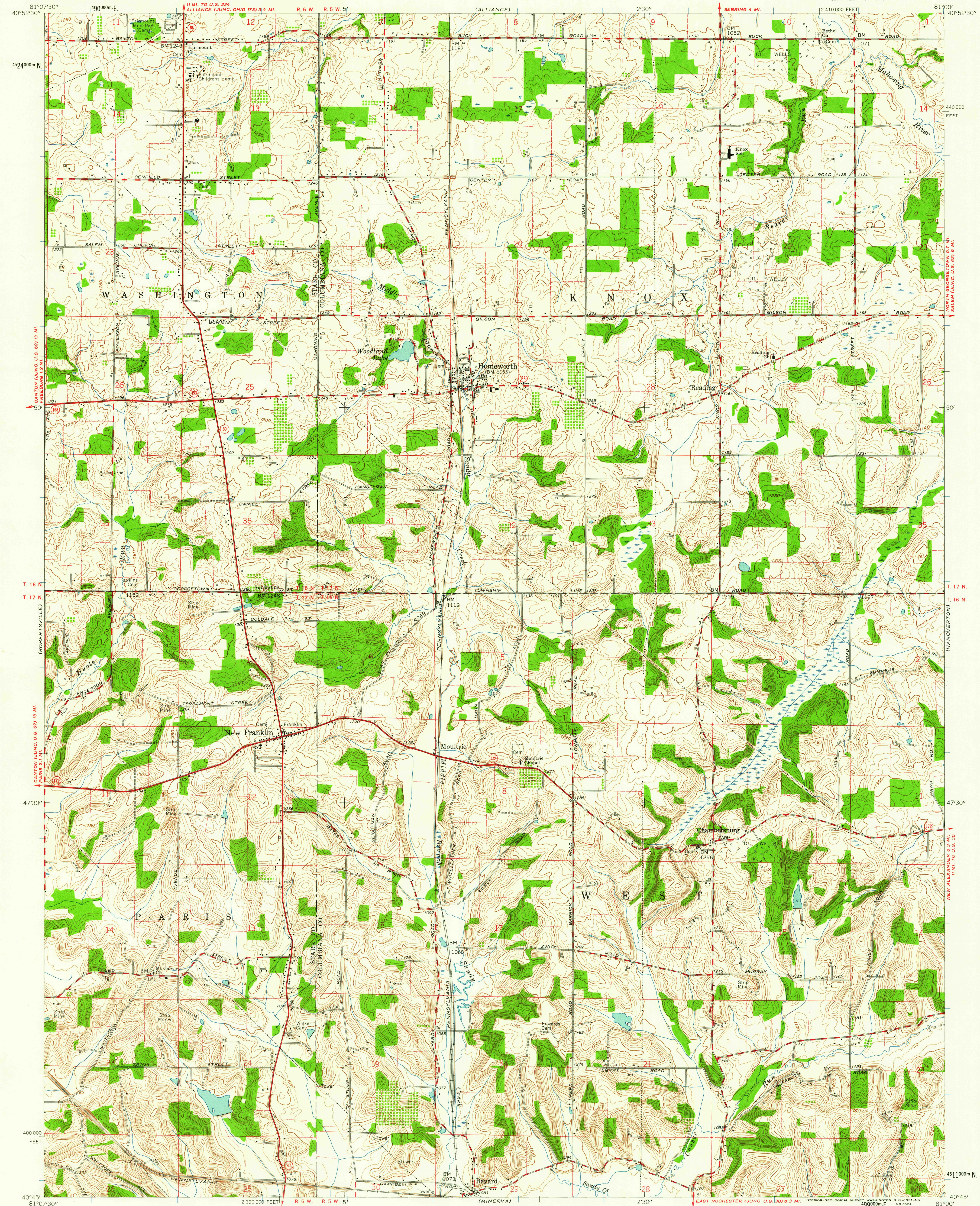


UNITED STATES
DEPARTMENT OF THE INTERIOR
GEOLOGICAL SURVEY

HOMEWORTH QUADRANGLE
OHIO
7.5 MINUTE SERIES (TOPOGRAPHIC)
SE 1/4 ALLIANCE 15' QUADRANGLE



Mapped, edited, and published by the Geological Survey
Control by USGS and USCGS
Topography from aerial photographs by photogrammetric methods
Aerial photographs taken 1952. Field check 1960
Polyconic projection, 1927 North American datum
10,000-foot grid based on Ohio coordinate system, north zone
1000-meter Universal Transverse Mercator grid ticks,
zone 17, shown in blue
Fine red dashed lines indicate fence and field lines where
generally visible on aerial photographs. This information is unchecked
All wells shown are oil wells
Entire area lies within Congress Lands North of Old Seven Ranges
Land lines based on Ohio River Base

APPROXIMATE MEAN
DECLINATION, 1960

SCALE 1:24,000
1 2 3 4 5 6 7 8 9 10 11 12 13 14 15 16 17 18 19 20 21 22 23 24 25 26 27 28 29 30 31 32 33 34 35 36 37 38 39 40 41 42 43 44 45 46 47 48 49 50 51 52 53 54 55 56 57 58 59 60 61 62 63 64 65 66 67 68 69 70 71 72 73 74 75 76 77 78 79 80 81 82 83 84 85 86 87 88 89 90 91 92 93 94 95 96 97 98 99 100
CONTOUR INTERVAL 10 FEET
DATUM IS MEAN SEA LEVEL
THIS MAP COMPLIES WITH NATIONAL MAP ACCURACY STANDARDS
FOR SALE BY THE GEOLOGICAL SURVEY, WASHINGTON 25, D. C.
A FOLDER DESCRIBING TOPOGRAPHIC MAPS AND SYMBOLS IS AVAILABLE ON REQUEST

USGS
Historical File
Topographic Division



ROAD CLASSIFICATION
Heavy-duty ———— Light-duty ————
Medium-duty ———— Unimproved dirt ————
State Route ————

U.S.G.S.
FILE COPY
TOPOGRAPHIC DIVISION
HISTORICAL

HOMEWORTH, OHIO
SE 1/4 ALLIANCE 15' QUADRANGLE
N4045-W8100/7.5

1960

OCT 26 1961
HISTORICAL