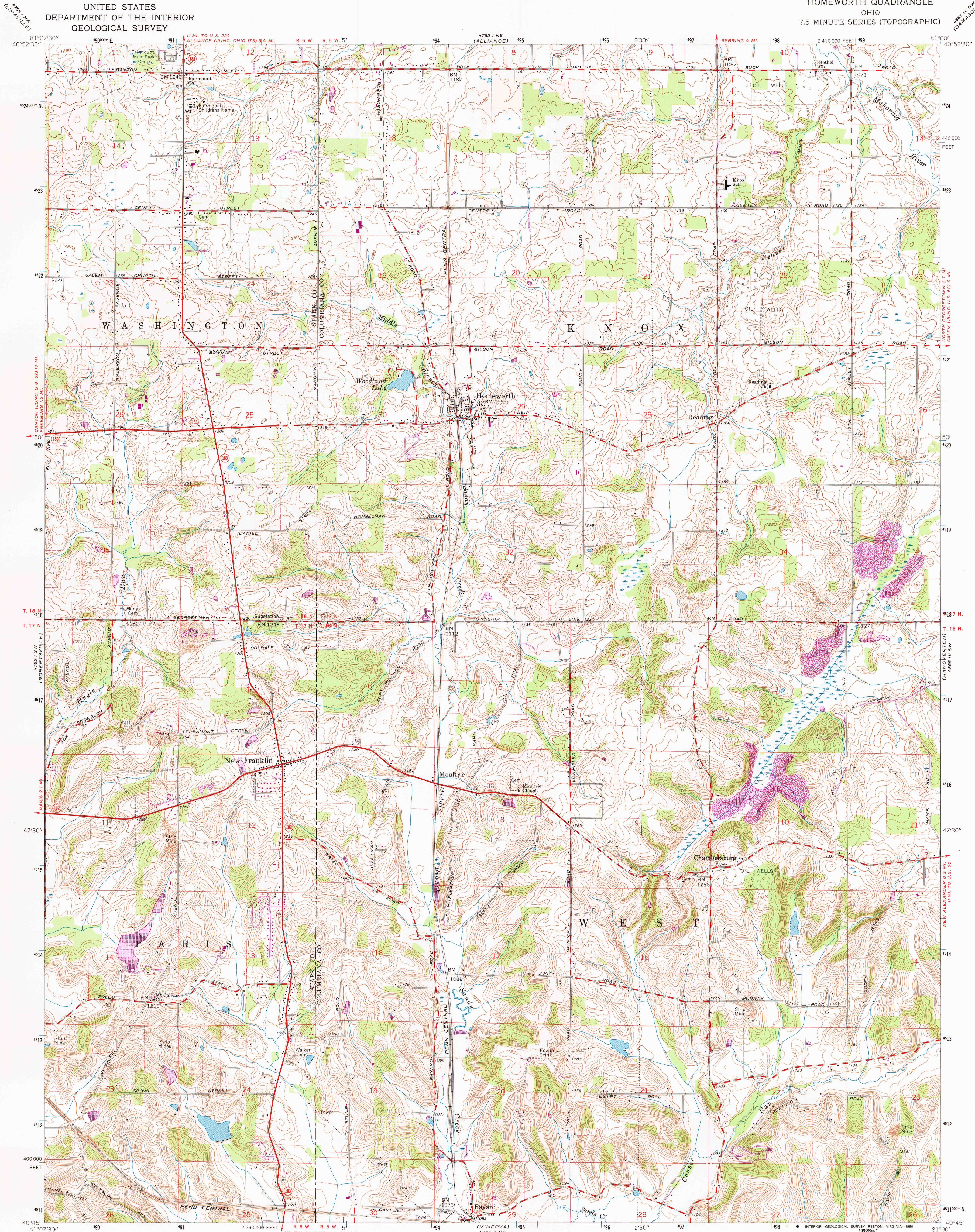
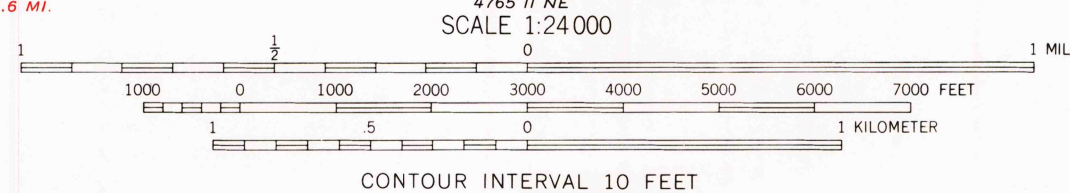
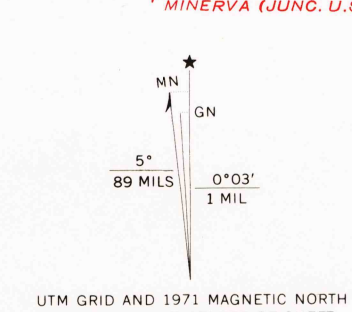


UNITED STATES
DEPARTMENT OF THE INTERIOR
GEOLOGICAL SURVEY

HOMEWORTH QUADRANGLE
OHIO
7.5 MINUTE SERIES (TOPOGRAPHIC)



Mapped, edited, and published by the Geological Survey
Control by USGS and USC&GS
Topography from aerial photographs by photogrammetric methods
Aerial photographs taken 1952. Field check 1960
Polyconic projection. 1927 North American datum
10,000-foot grid based on Ohio coordinate system, north zone
1000-meter Universal Transverse Mercator grid ticks,
zone 17, shown in blue
Fine red dashed lines indicate fence and field lines where
generally visible on aerial photographs. This information is unchecked
All wells shown are oil wells from State of Ohio files
Entire area lies within Congress Lands North of Old Seven Ranges
Land lines based on Ohio River Base
Map photorevised 1976
No major culture or drainage changes observed



ROAD CLASSIFICATION
Heavy-duty ——— Light duty ———
Medium-duty ——— Unimproved dirt ———
State Route ———

HOMEWORTH, OHIO

N 4045—W 8100/7.5
PHOTOINSPECTED 1976
1960
PHOTOREVISED 1971
AMS 4765 I SE—SERIES V852

THIS MAP COMPLIES WITH NATIONAL MAP ACCURACY STANDARDS
FOR SALE BY U.S. GEOLOGICAL SURVEY
DENVER, COLORADO 80225, OR RESTON, VIRGINIA 22092
A FOLDER DESCRIBING TOPOGRAPHIC MAPS AND SYMBOLS IS AVAILABLE ON REQUEST

Revisions shown in purple compiled in cooperation with
State of Ohio agencies from aerial photographs taken
1971. This information not field checked

