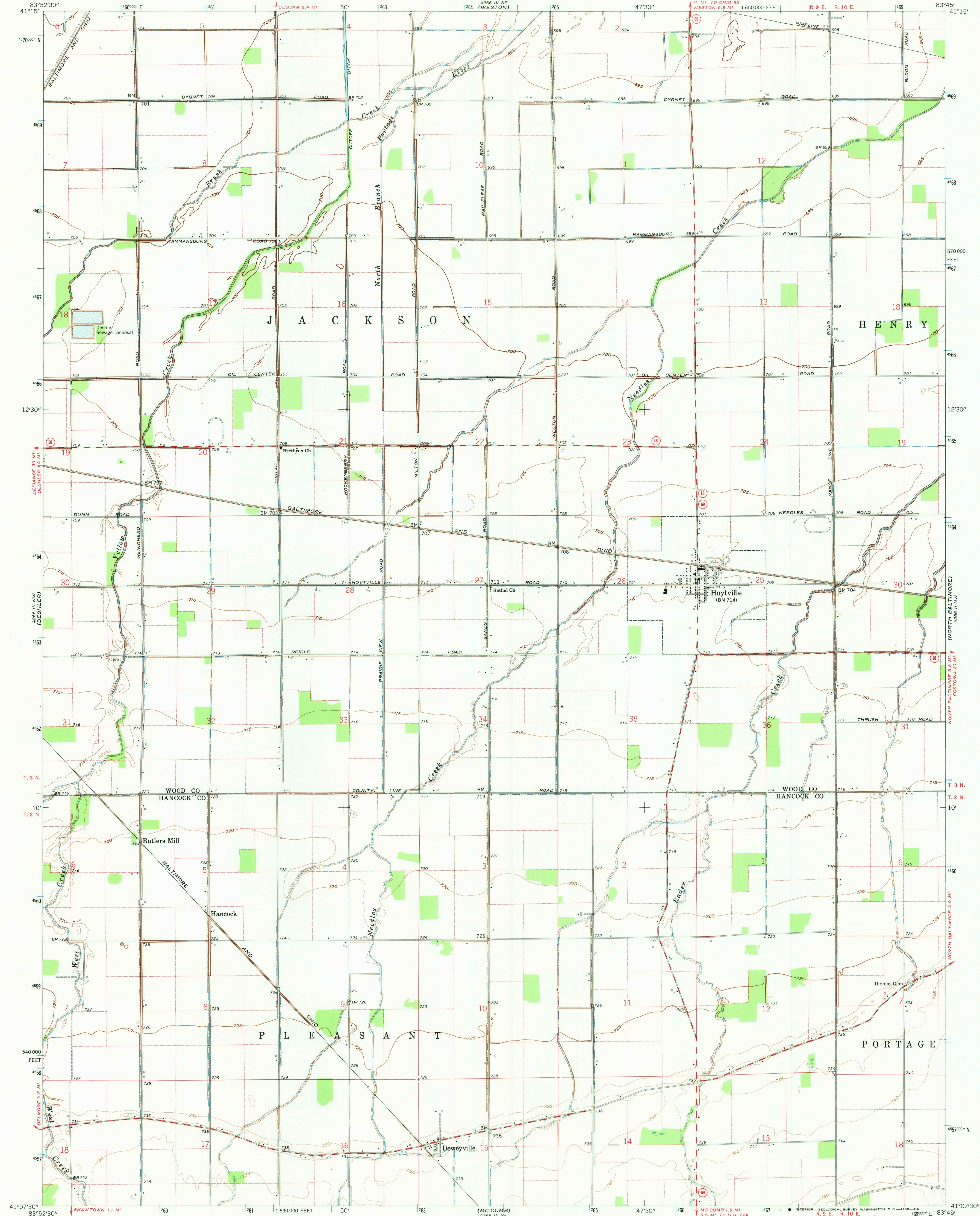


UNITED STATES
DEPARTMENT OF THE INTERIOR
GEOLOGICAL SURVEY

STATE OF OHIO
DEPARTMENT OF HIGHWAYS
DEPARTMENT OF NATURAL RESOURCES
DIVISION OF GEOLOGICAL SURVEY

HOYTVILLE QUADRANGLE
OHIO
7.5 MINUTE SERIES (TOPOGRAPHIC)
NE 1/4 DESHLER 15' QUADRANGLE



Mapped, edited, and published by the Geological Survey

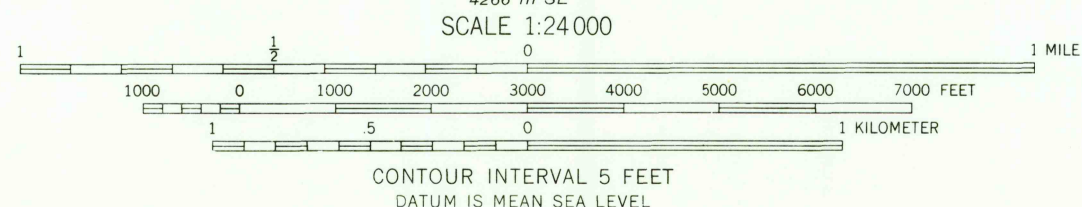
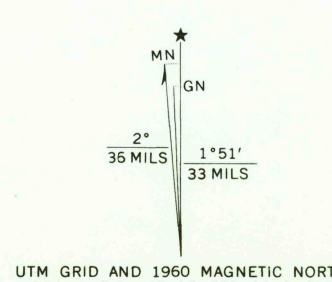
Control by USGS and USC&GS

Culture and drainage in part compiled from aerial photographs taken 1959. Topography by planetable surveys 1960

Polyconic projection. 1927 North American datum 10,000-foot grid based on Ohio coordinate system, north zone 1000-meter Universal Transverse Mercator grid ticks, zone 17, shown in blue

Entire area lies within Congress Lands
Land lines based on the First Principal Meridian

Fine red dashed lines indicate selected fence and field lines where generally visible on aerial photographs. This information is unchecked



USGS
Historical File
Topographic Division

ROAD CLASSIFICATION
Medium-duty ——— Light-duty ———
Unimproved dirt ———
State Route



HOYTVILLE, OHIO
NE 1/4 DESHLER 15' QUADRANGLE
N 4107.5 - W 8345/7.5
1960
AMS 4266 III NE-SERIES V852

3210
JAN 3 1960
HISTORICAL