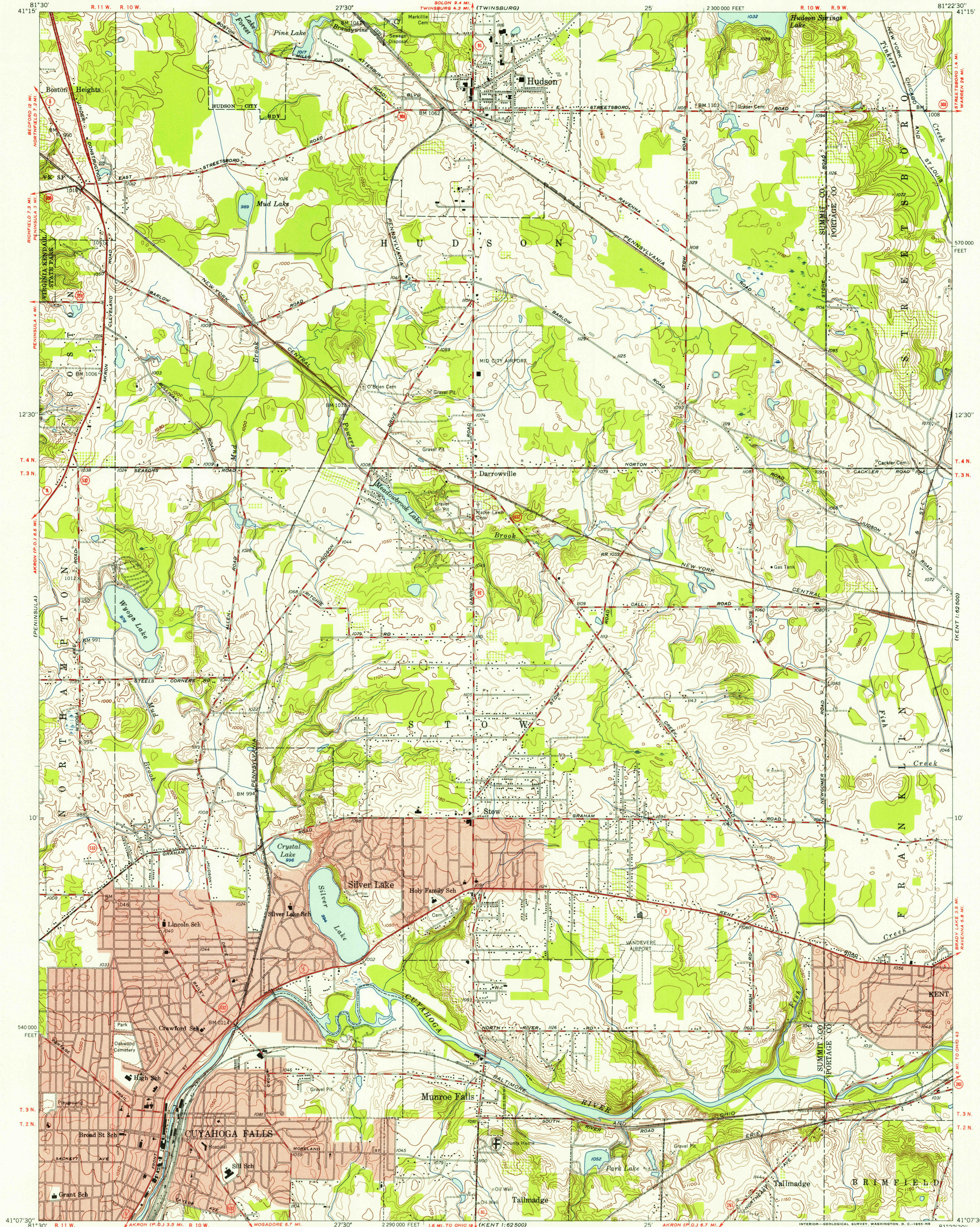
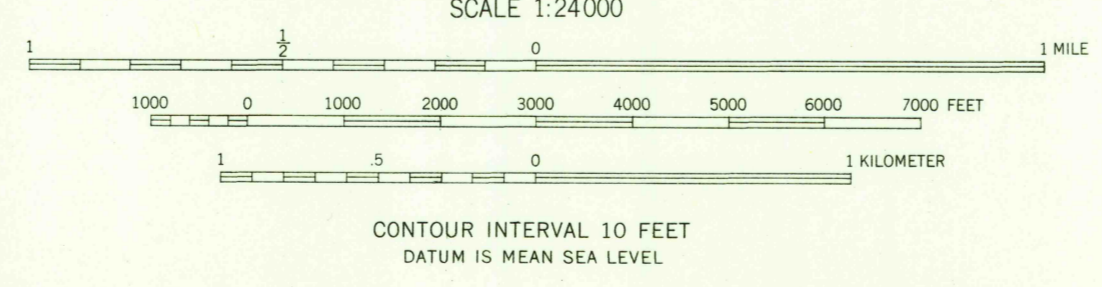


U.S.G.S.
FILE COPY
TOPOGRAPHIC DIVISION



U.S.G.S.
FILE COPY
TOPOGRAPHIC DIVISION
HISTORICAL

Mapped, edited, and published by the Geological Survey
Control by USGS and USC&GS
Topography from aerial photographs by Kelsh plotter
and by plane-table surveys 1953. Aerial photographs taken 1952
Polyconic projection. 1927 North American datum
10,000-foot grid based on Ohio coordinate system,
north zone
Red tint indicates areas in which only
landmark buildings are shown
Entire area lies within the Connecticut Western Reserve
Land lines were established by the Connecticut Land Company



U.S.G.S. Historical File Topographic Division

| ROAD CLASSIFICATION | |
|---------------------|---------------|
| Heavy-duty | 4 LANE 6 LANE |
| Medium-duty | 4 LANE 6 LANE |
| Light-duty | 2 LANE 4 LANE |
| Unimproved dirt | ----- |

U.S. Route (red circle with number)
State Route (black circle with number)

THIS MAP COMPLIES WITH NATIONAL MAP ACCURACY STANDARDS
FOR SALE BY U. S. GEOLOGICAL SURVEY, WASHINGTON 25, D. C.
A FOLDER DESCRIBING TOPOGRAPHIC MAPS AND SYMBOLS IS AVAILABLE ON REQUEST

HUDSON, OHIO
NW/4 KENT 15' QUADRANGLE
N4107.5-W8122.5/7.5

1953