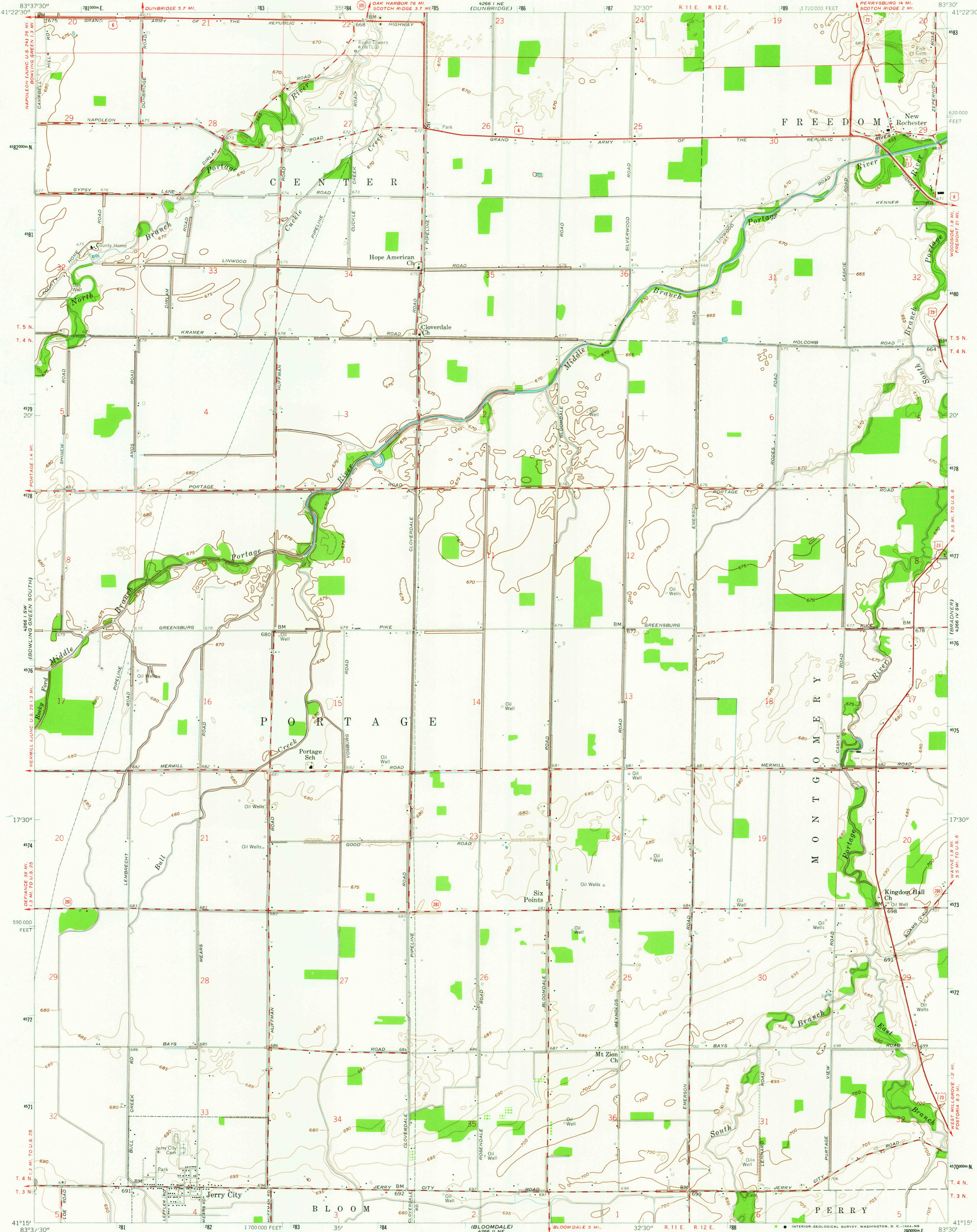


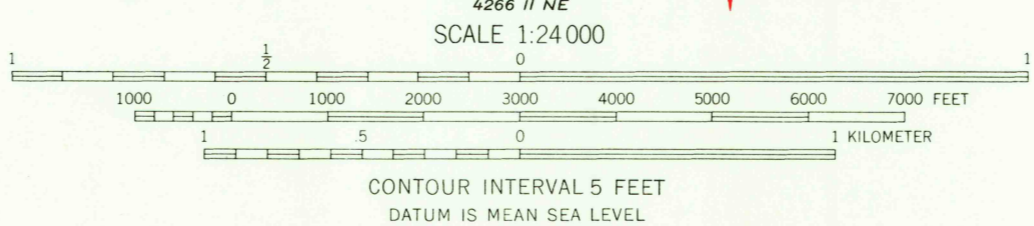
UNITED STATES  
DEPARTMENT OF THE INTERIOR  
GEOLOGICAL SURVEY

JERRY CITY QUADRANGLE  
OHIO—WOOD CO.  
7.5 MINUTE SERIES (TOPOGRAPHIC)  
SE/4 BOWLING GREEN 15' QUADRANGLE



Mapped, edited, and published by the Geological Survey  
Control by USGS and USC&GS  
Culture and drainage from controlled aerial photo mosaic  
Aerial photographs taken 1951. Topography by planetable  
surveys 1958  
Polyconic projection, 1927 North American datum  
10,000-foot grid based on Ohio coordinate system, north zone  
1000-meter Universal Transverse Mercator grid ticks,  
zone 17, shown in blue  
Land lines based on First Principal Meridian

UTM GRID AND 1958 MAGNETIC NORTH  
DECLINATION AT CENTER OF SHEET



USGS  
Historical File  
Topographic Division

ROAD CLASSIFICATION  
Heavy-duty ——— Light-duty ———  
Medium-duty ——— Unimproved dirt ———  
U.S. Route ——— State Route ———



HISTORICAL  
U.S.G.S.  
FILE COPY  
TOPOGRAPHIC DIVISION

JERRY CITY, OHIO  
SE/4 BOWLING GREEN 15' QUADRANGLE  
N 4115—W 8330/7.5

NOV 23 1964

THIS MAP COMPLIES WITH NATIONAL MAP ACCURACY STANDARDS  
FOR SALE BY U.S. GEOLOGICAL SURVEY, WASHINGTON 25, D. C.  
A FOLDER DESCRIBING TOPOGRAPHIC MAPS AND SYMBOLS IS AVAILABLE ON REQUEST

1958  
AMS 4266 1 SE—SERIES V852

HISTORICAL

4695