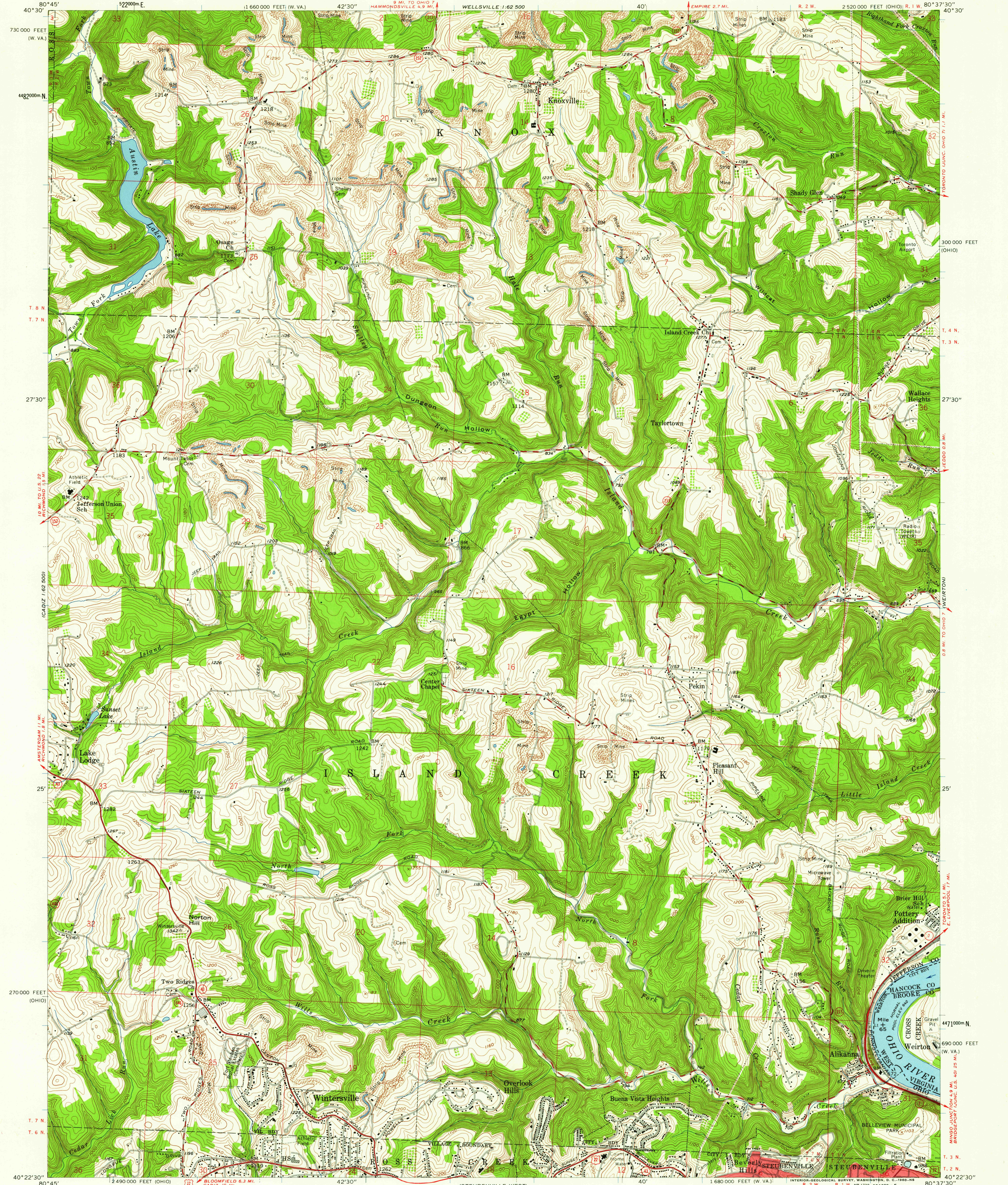


UNITED STATES
DEPARTMENT OF THE INTERIOR
GEOLOGICAL SURVEY

KNOXVILLE QUADRANGLE
OHIO—WEST VIRGINIA
7.5 MINUTE SERIES (TOPOGRAPHIC)
NW/4 STEUBENVILLE 15' QUADRANGLE



Mapped, edited, and published by the Geological Survey
Control by USGS and USC&GS
Topography from aerial photographs by photogrammetric methods
Aerial photographs taken 1954. Field check 1958
Polyconic projection. 1927 North American datum
10,000-foot grids based on Ohio coordinate system, north zone,
and West Virginia coordinate system, north zone. 1000-meter
Universal Transverse Mercator grid ticks, zone 17, shown in blue
Red tint indicates areas in which only landmark buildings are shown
The state boundary as shown represents the approximate position of
the low waterline as determined from U. S. Corps of Engineers Ohio
River charts, surveyed 1913, and supplementary information
Land lines based on Ohio River Base
All wells shown are oil wells
Unchecked elevations are shown in brown

SCALE 1:24,000
1 0 1000 2000 3000 4000 5000 6000 7000 FEET
1 0 5 10 KILOMETER
CONTOUR INTERVAL 20 FEET
DOTTED LINES REPRESENT 10-FOOT CONTOURS
DATUM IS MEAN SEA LEVEL

USGS
Historical File
Topographic Division

ROAD CLASSIFICATION
Heavy-duty ——— Light-duty ———
Medium-duty ——— Unimproved dirt ———
U. S. Route ——— State Route ———

U.S.G.S.
FILE COPY
TOPOGRAPHIC DIVISION
HISTORICAL

KNOXVILLE, OHIO—W. VA.
NW/4 STEUBENVILLE 15' QUADRANGLE
N4022.5—W8037.5/7.5

1958

HISTORICAL

MAR 16 1960

2545