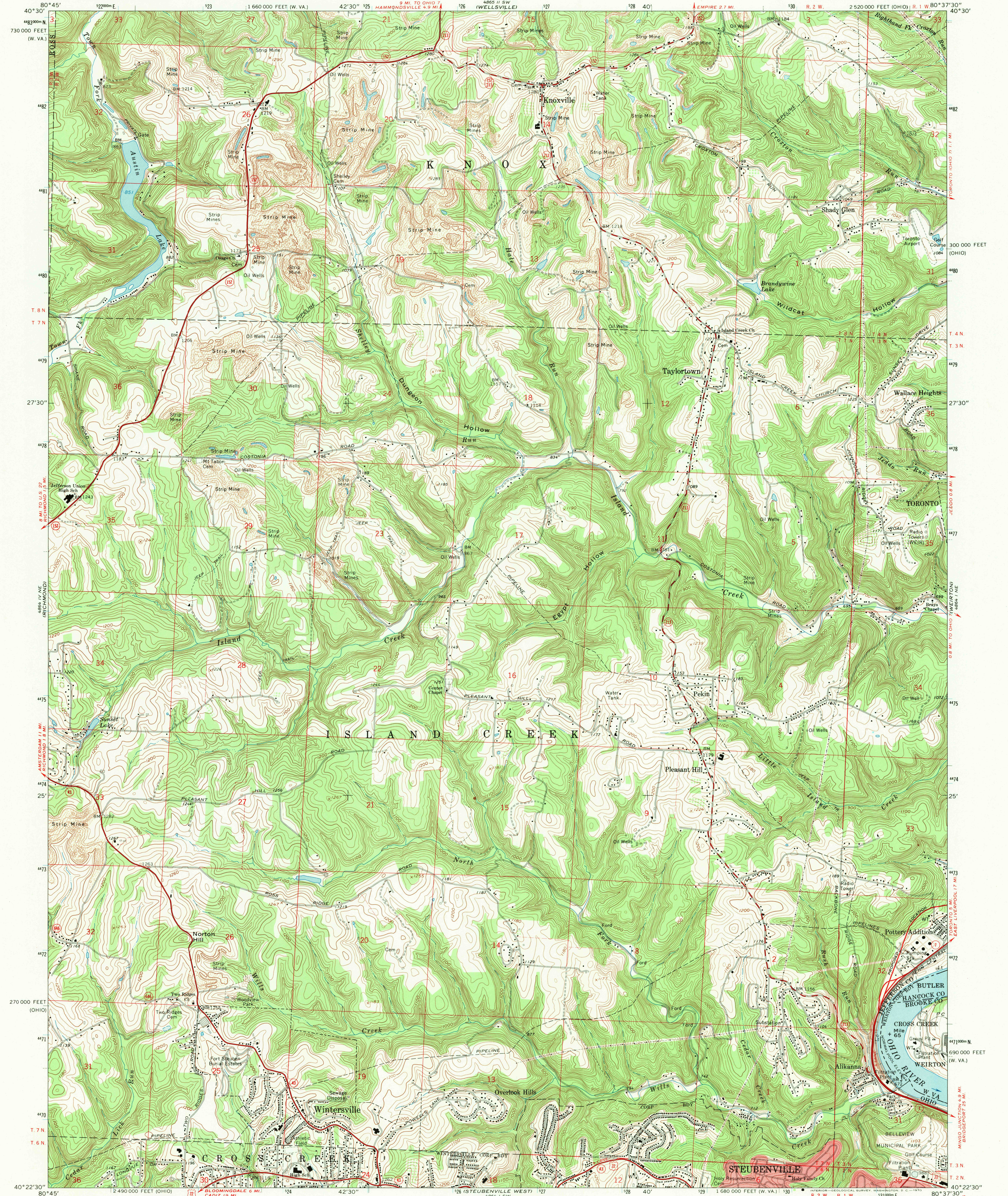
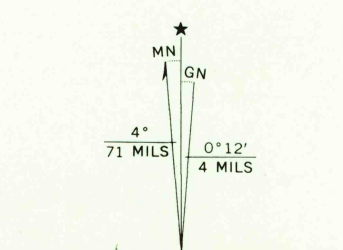


UNITED STATES
DEPARTMENT OF THE INTERIOR
GEOLOGICAL SURVEY

KNOXVILLE QUADRANGLE
OHIO—WEST VIRGINIA
7.5 MINUTE SERIES (TOPOGRAPHIC)



Mapped, edited, and published by the Geological Survey
Revised in cooperation with State of Ohio agencies
Control by USGS and USC&GS
Topography by photogrammetric methods from aerial photographs taken
1954. Field checked 1958. Revised from aerial photographs
taken 1966. Field checked 1968.
Polyconic projection. 1927 North American datum
10,000-foot grids based on Ohio coordinate system, north zone, and
West Virginia coordinate system, north zone. 1000-meter Universal
Transverse Mercator grid ticks, zone 17, shown in blue.
Fine red dashed lines indicate selected fence and field lines where
generally visible on aerial photographs. This information is unchecked.
The state boundary as shown represents the approximate position of
the low water line as determined from U. S. Corps of Engineers Ohio
River charts, surveyed 1913, and supplementary information.
Red tint indicates areas in which only landmark buildings are shown
Ohio area lies within the Old Seven Ranges. Land lines based on
the Ohio River Base.



SCALE 1:24,000
CONTOUR INTERVAL 20 FEET
DOTTED LINES REPRESENT 10-FOOT CONTOURS
DATUM IS MEAN SEA LEVEL

THIS MAP COMPLIES WITH NATIONAL MAP ACCURACY STANDARDS
FOR SALE BY U. S. GEOLOGICAL SURVEY, WASHINGTON, D. C. 20242
A FOLDER DESCRIBING TOPOGRAPHIC MAPS AND SYMBOLS IS AVAILABLE ON REQUEST

USGS
Historical File
Topographic Division



QUADRANGLE LOCATION

ROAD CLASSIFICATION
Primary highway, all weather, hard surface
Secondary highway, all weather, hard surface
Light-duty road, all weather, improved surface
Unimproved road, fair or dry weather
U. S. Route
State Route

U.S.G.S.
FILE COPY
TOPOGRAPHIC DIVISION

KNOXVILLE, OHIO—W. VA.
N4022.5—W8037.5/7.5

1968
AMS 4864 1 NW—SERIES V852

JUL 2 1970

38410
HISTORICAL