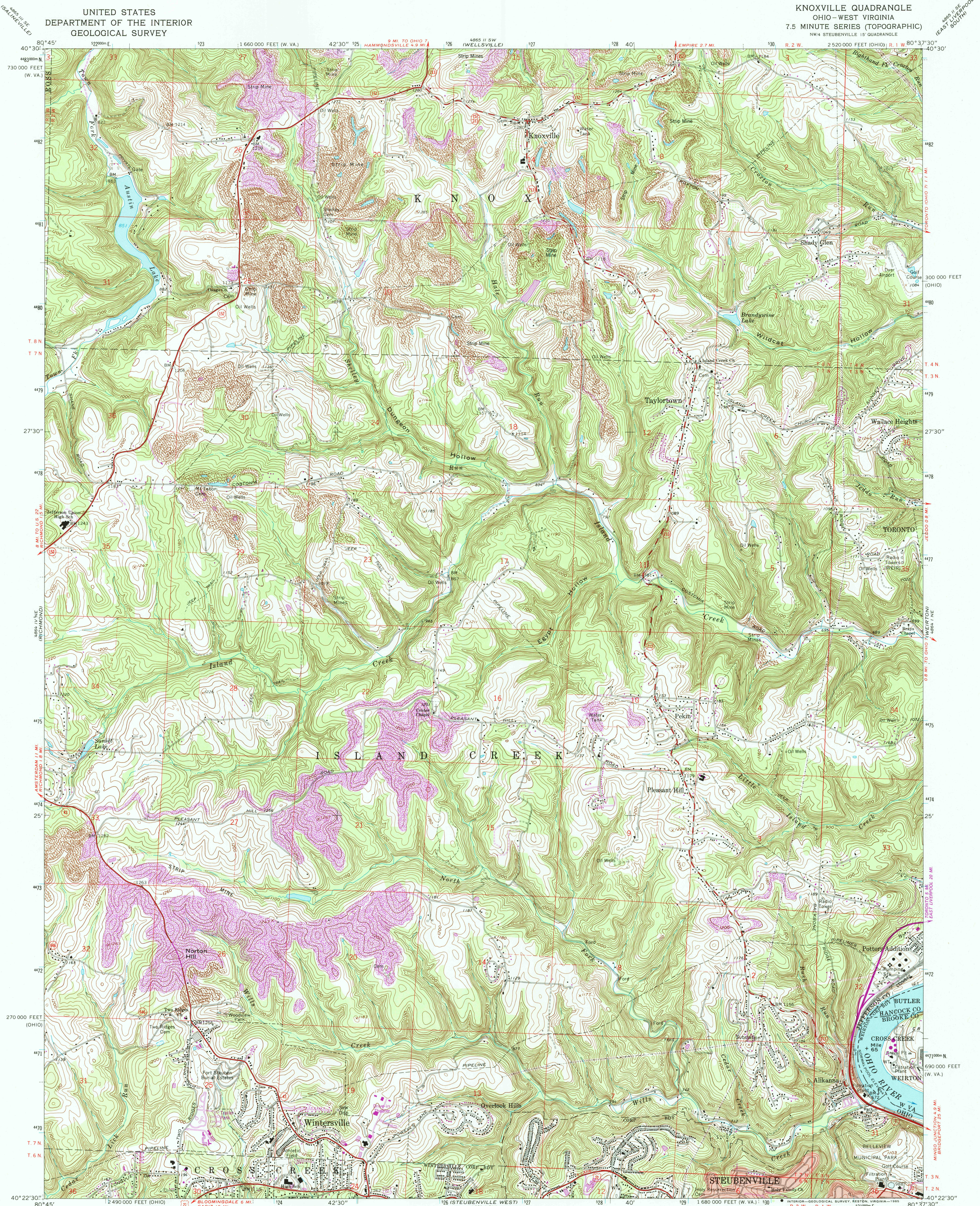
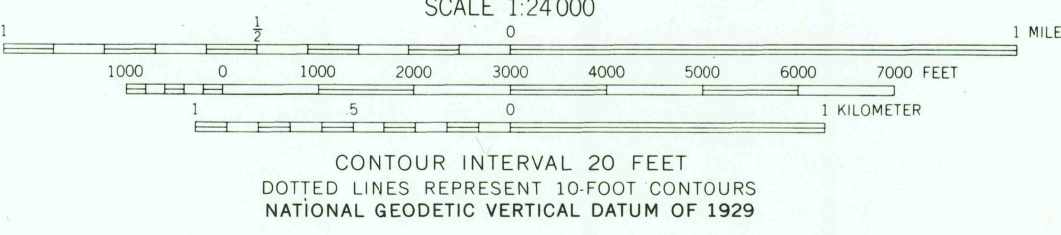
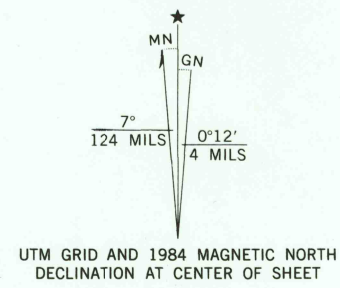


UNITED STATES
DEPARTMENT OF THE INTERIOR
GEOLOGICAL SURVEY

KNOXVILLE QUADRANGLE
OHIO - WEST VIRGINIA
7.5 MINUTE SERIES (TOPOGRAPHIC)
NW/4 STEUBENVILLE 15' QUADRANGLE



Mapped, edited, and published by the Geological Survey
Revised in cooperation with State of Ohio agencies
Control by USGS and NOS/NOAA
Topography by photogrammetric methods from aerial photographs
taken 1954. Field checked 1958. Revised from aerial photographs
taken 1966. Field checked 1968
Polyconic projection, 10,000-foot grid ticks based on Ohio
coordinate system, north zone, and West Virginia
coordinate system, north zone
1000-meter Universal Transverse Mercator grid ticks, zone 17,
shown in blue
1927 North American Datum
To place on the predicted North American Datum 1983
move the projection lines 4 meters south and
16 meters west as shown by dashed corner ticks
Fine red dashed lines indicate selected fence and field lines where
generally visible on aerial photographs. This information is unchecked
The state boundary as shown represents the approximate position of
the low water line as determined from U. S. Corps of Engineers Ohio
River charts, surveyed 1913, and supplementary information
Ohio area lies within the Old Seven Ranges. Land lines based
on the Ohio River Base



ROAD CLASSIFICATION

Primary highway, all weather, hard surface	Light-duty road, all weather, improved surface
Secondary highway, all weather, hard surface	Unimproved road, fair or dry weather
U. S. Route	State Route

KNOXVILLE, OHIO - W. VA.
NW/4 STEUBENVILLE 15' QUADRANGLE
40080-D6-TF-024

Revisions shown in purple and woodland compiled in cooperation
with State of Ohio agencies from aerial photographs taken
1982 and other sources. This information not field checked
Map edited 1984

1968
PHOTOREVISED 1984
DMA 4864 1 NW - SERIES 1982

RETURN TO:
USGS AND HISTORICAL MAP ARCHIVES