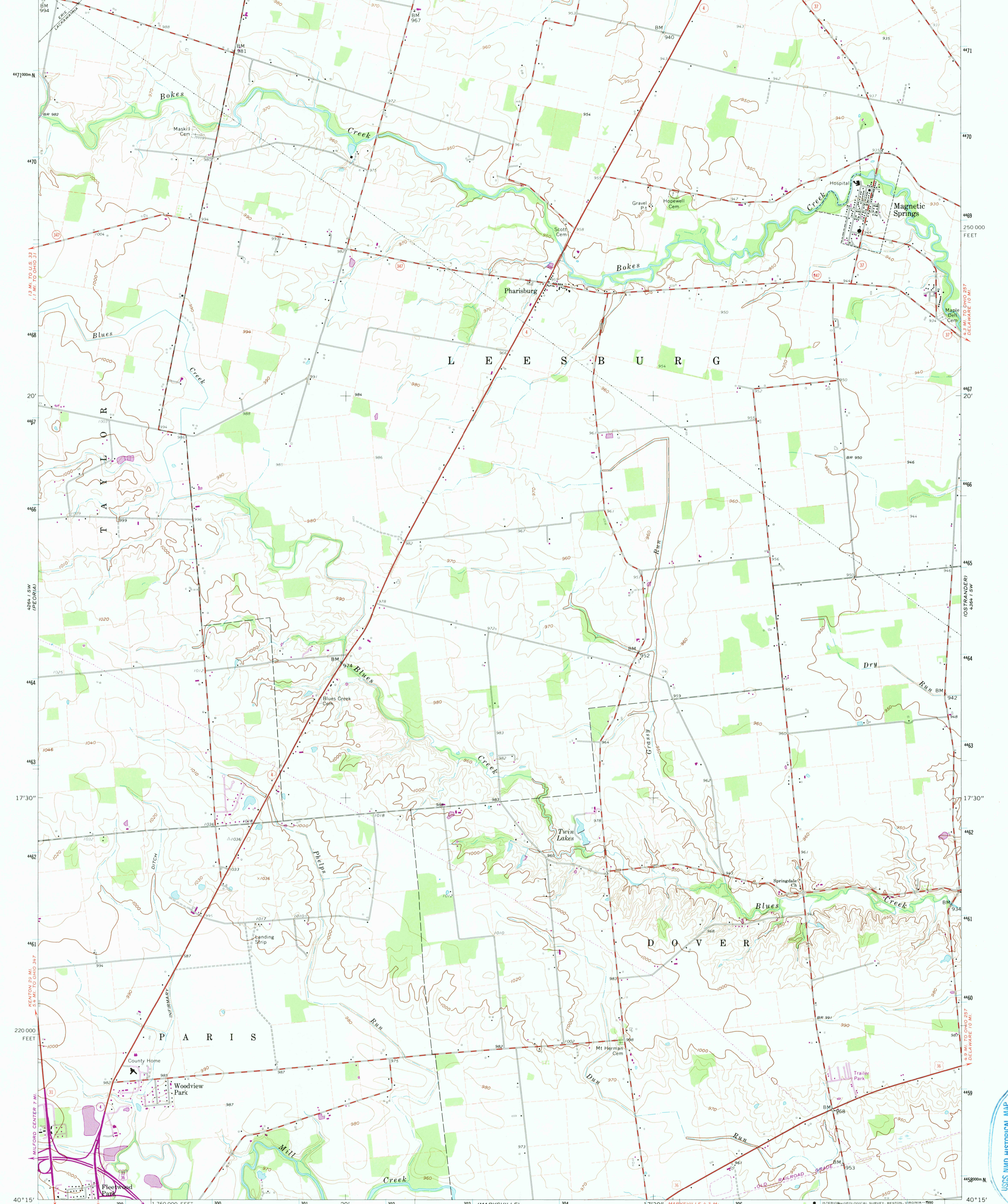


83° 22' 30" 20' 02' 03' 04' 05' 17' 30" 06' 07' 08' 1790 000 FEET 83° 15' 40° 22' 30"



Mapped, edited, and published by the Geological Survey
Control by USGS and USC&GS

Topography by photogrammetric methods from aerial
photographs taken 1959. Field checked 1961

Polyconic projection. 1927 North American datum
10,000-foot grid based on Ohio coordinate system, north zone
1000-meter Universal Transverse Mercator grid ticks,
zone 17, shown in blue

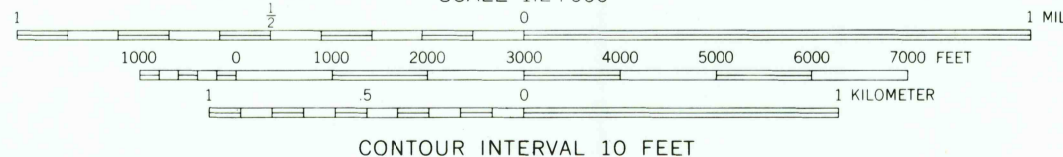
Fine red dashed lines indicate selected fence and field lines where
generally visible on aerial photographs. This information is unchecked
Entire area lies within the Virginia Military District

Revisions shown in purple compiled in cooperation with
State of Ohio agencies from aerial photographs taken
1973. This information not field checked



UTM GRID AND 1973 MAGNETIC NORTH
DECLINATION AT CENTER OF SHEET

Map photoinspected 1984
No major culture or drainage changes observed



CONTOUR INTERVAL 10 FEET
DATUM IS MEAN SEA LEVEL

THIS MAP COMPLIES WITH NATIONAL MAP ACCURACY STANDARDS
FOR SALE BY U.S. GEOLOGICAL SURVEY
DENVER, COLORADO 80225, OR RESTON, VIRGINIA 22092
A FOLDER DESCRIBING TOPOGRAPHIC MAPS AND SYMBOLS IS AVAILABLE ON REQUEST

ROAD CLASSIFICATION	
Heavy-duty	Light-duty
Medium-duty	Unimproved dirt
U. S. Route	State Route



MAGNETIC SPRINGS, OHIO

N4015 - W8315/7.5
PHOTOINSPECTED 1984
1961
PHOTOREVISED 1973
AMS 4364 IV SE-SERIES V852

USGS NHD HISTORICAL MAP
JUL 2 1991
REC'D FILE COPY

SHAWNEE HILLS
4364 IV SE
7.5 MINUTE SERIES