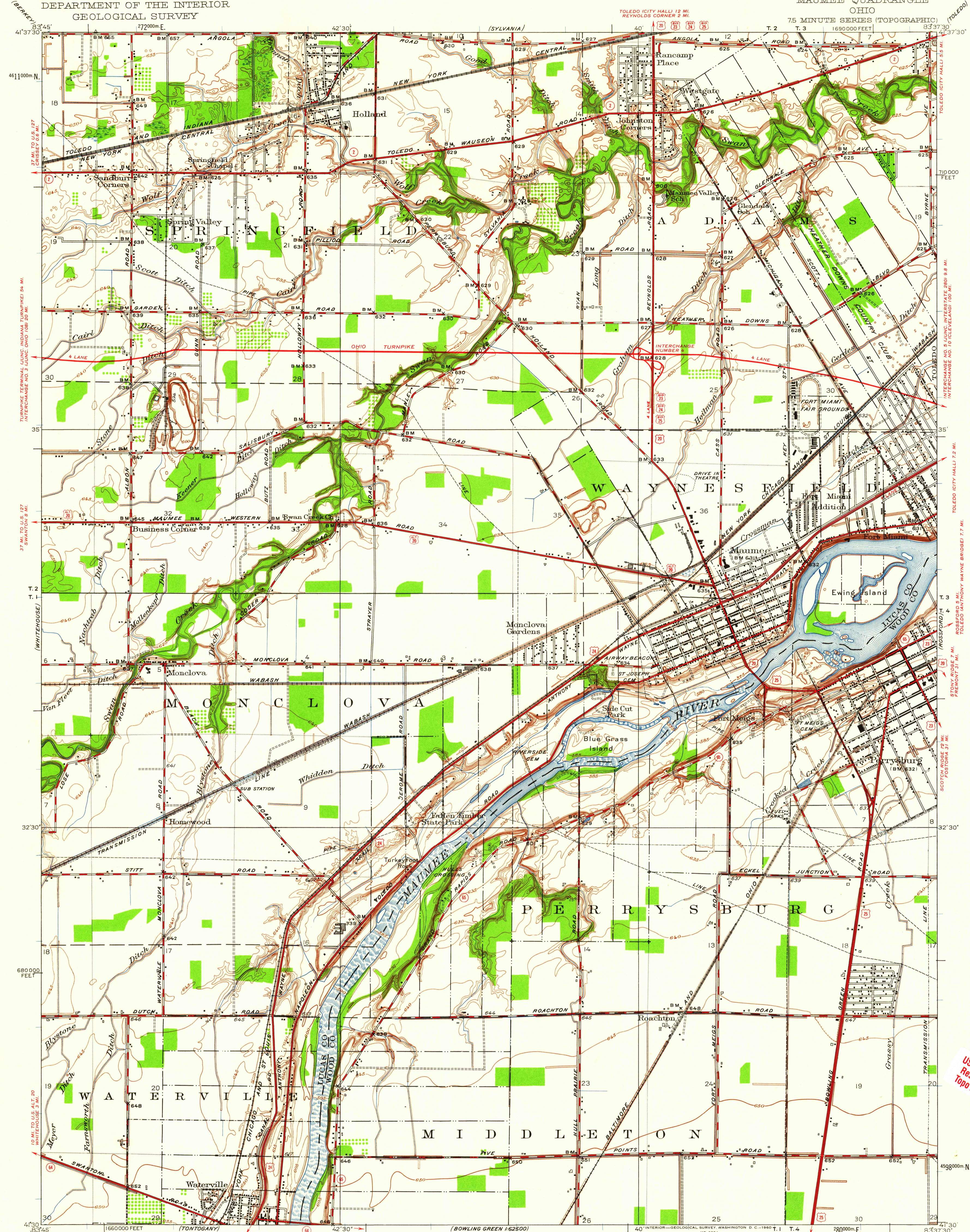
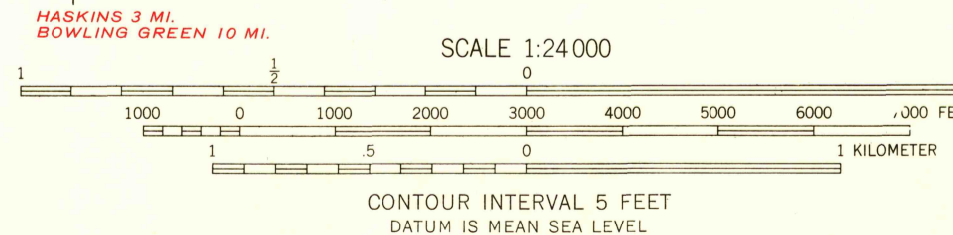


UNITED STATES
DEPARTMENT OF THE INTERIOR
GEOLOGICAL SURVEY

MAUMEE QUADRANGLE
OHIO



Mapped, edited, and published by the Geological Survey
Compiled in part from aerial photographs
Surveyed in 1934 and 1935 Revised in 1951
Polyconic projection, 1927 North American datum
10,000-foot grid based on Ohio coordinate system,
north zone
1000-meter Universal Transverse Mercator grid ticks,
zone 17, shown in blue



USGS
Historical File
Topographic Division

ROAD CLASSIFICATION

Heavy-duty	Light-duty
Medium-duty	Unimproved dirt
U.S. Route	State Route

THIS MAP COMPLIES WITH NATIONAL MAP ACCURACY STANDARDS
FOR SALE BY U.S. GEOLOGICAL SURVEY, WASHINGTON 25, D. C.
A FOLDER DESCRIBING TOPOGRAPHIC MAPS AND SYMBOLS IS AVAILABLE ON REQUEST

U.S.G.S.
FILE COPY
TOPOGRAPHIC DIVISION

MAUMEE, OHIO
N4130-W8337.5/7.5

1951

JUN 16 1960

2640

USGS Library
Reston, VA
Topo Archive