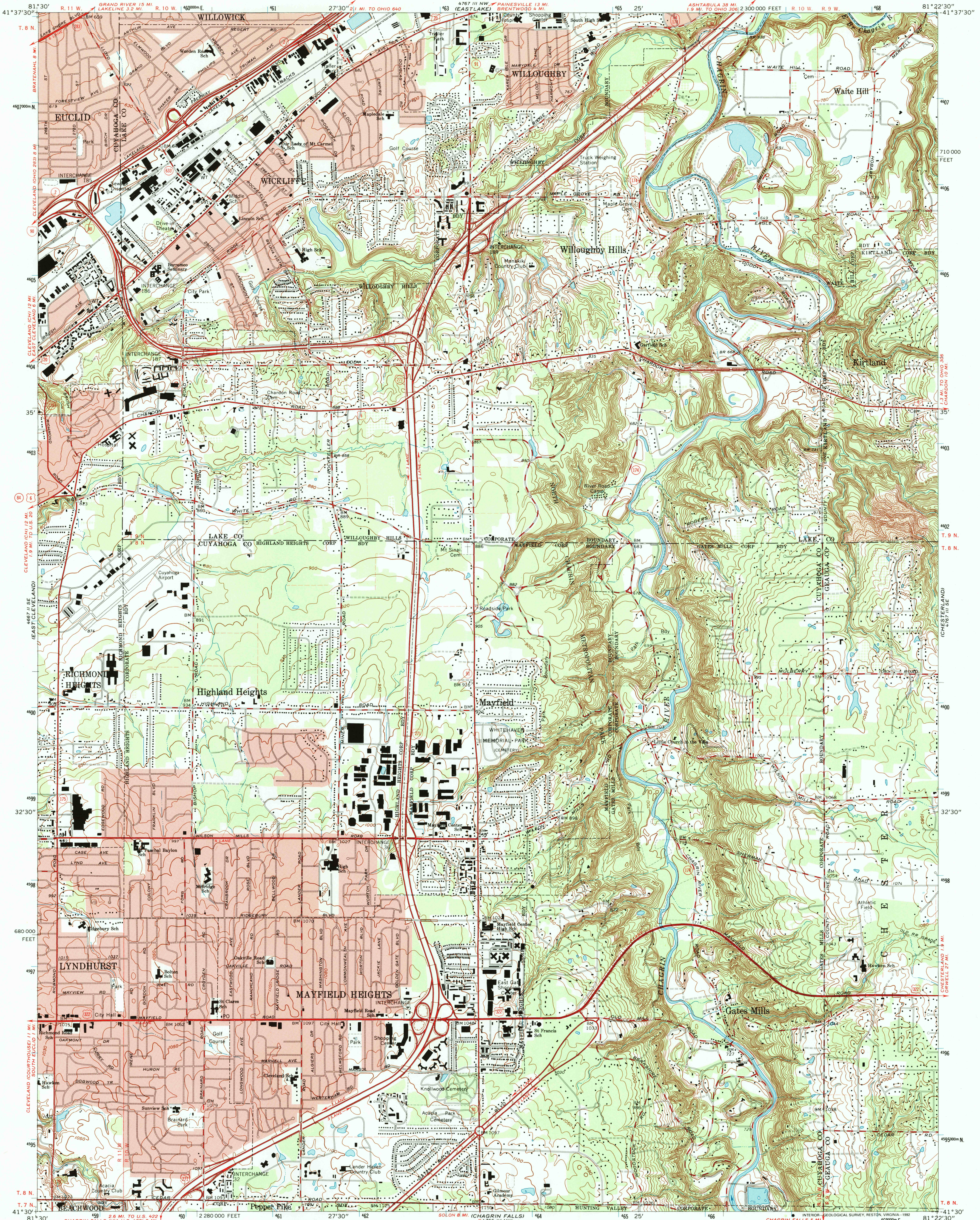


UNITED STATES  
DEPARTMENT OF THE INTERIOR  
GEOLOGICAL SURVEY

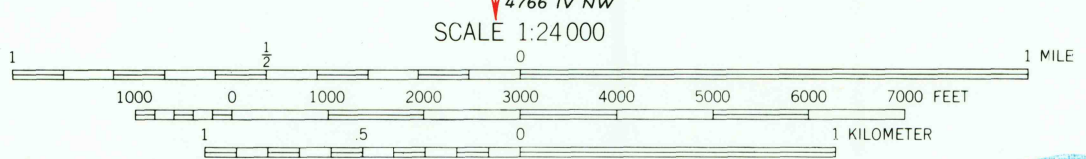
MAYFIELD HEIGHTS QUADRANGLE  
OHIO  
7.5 MINUTE SERIES (TOPOGRAPHIC)



Mapped, edited, and published by the Geological Survey  
Revised in cooperation with State of Ohio agencies  
Control by USGS, NOS/NOAA, and Cleveland Regional Geodetic Survey  
Topography by photogrammetric methods from aerial photographs  
taken 1952. Field checked 1953. Revised from aerial photographs  
taken 1952. Field checked 1963.

Polyconic projection. 10,000-foot grid ticks based on Ohio  
coordinate system, north zone  
1000-meter Universal Transverse Mercator grid ticks,  
zone 17, shown in blue  
1927 North American Datum  
The difference between 1927 North American Datum and North  
American Datum of 1983 (NAD 83) for 7.5-minute intersections  
is given in USGS Bulletin 1875. The NAD 83 is shown by  
dashed corner ticks

Fine red dashed lines indicate selected fence and field lines where  
generally visible on aerial photographs. This information is unchecked  
Red tint indicates areas in which only landmark buildings are shown  
Entire area lies within the Connecticut Western Reserve. Land lines  
established by private subdivision of the Connecticut Western Reserve



CONTOUR INTERVAL 10 FEET  
NATIONAL GEODETIC VERTICAL DATUM OF 1929

ROAD CLASSIFICATION

Heavy-duty	Light-duty
Medium-duty	Unimproved dirt
Interstate Route	U.S. Route
	State Route

USGS AND HISTORICAL  
MAP ARCHIVES  
OCT 02 1992  
REC'D FILE COPY



MAYFIELD HEIGHTS, OHIO  
41081-E4-TF-024

1963  
REVISED 1992  
DMA 4767 III SW - SERIES V852

THIS MAP COMPLIES WITH NATIONAL MAP ACCURACY STANDARDS  
FOR SALE BY U.S. GEOLOGICAL SURVEY  
DENVER, COLORADO 80225 OR RESTON, VIRGINIA 22092  
A FOLDER DESCRIBING TOPOGRAPHIC MAPS AND SYMBOLS IS AVAILABLE ON REQUEST

Revisions compiled in cooperation with  
State of Ohio agencies from aerial  
photographs taken 1988 and other sources.  
Contours not revised. This information  
not field checked. Map edited 1992